

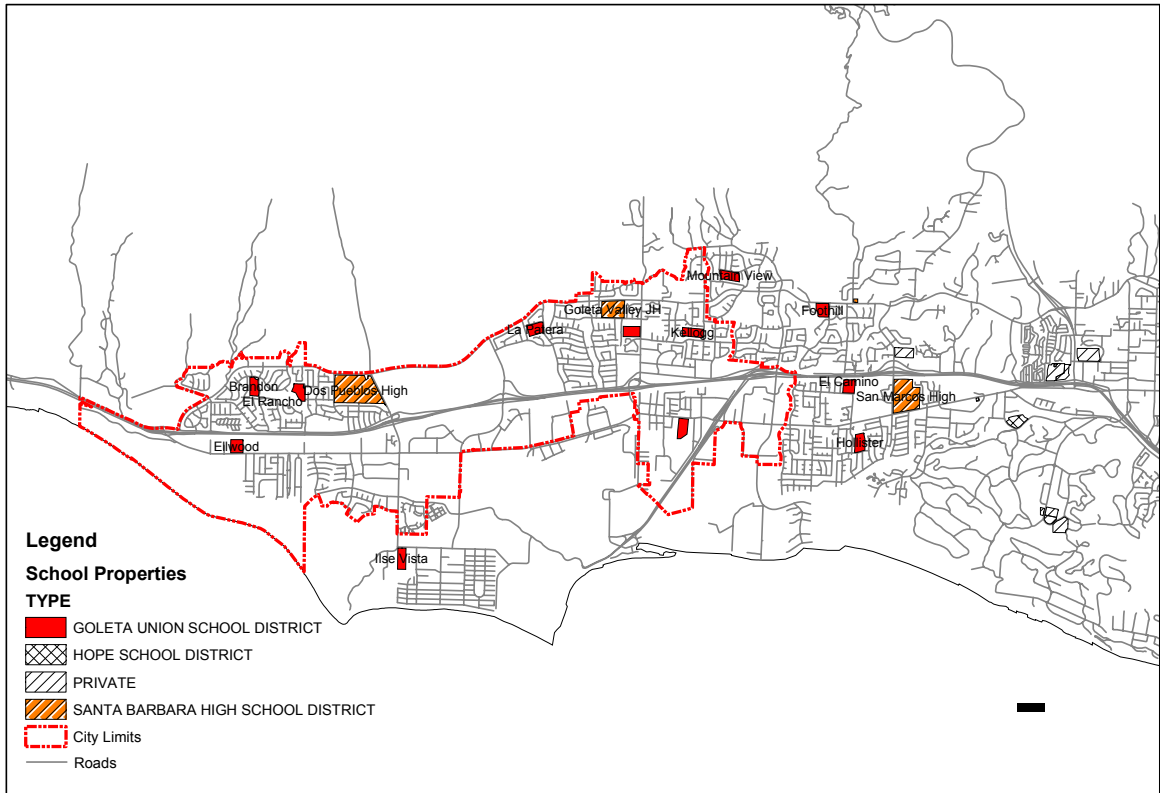
DRAFT 2
City of Goleta, California
 Monday, March 21, 2005
BACKGROUND REPORT NO. 5

SCHOOLS
City of Goleta, California

INTRODUCTION

School age children living in the City of Goleta attend two separate public school districts. The Goleta Union School District is the elementary school district for the City of Goleta, serving students from kindergarten through sixth grade. Junior high and high school age students attend Goleta Valley Junior High and Dos Pueblos High School which are a part of the Santa Barbara High School District. In addition, a number of private schools serve the city and a number of students who are home-schooled. This report presents the history of the schools, their capacity, enrollment statistics and facilities.

Public and Private School Properties in Goleta Area
 City of Goleta, California
 2003



City of Goleta, California; October 2003

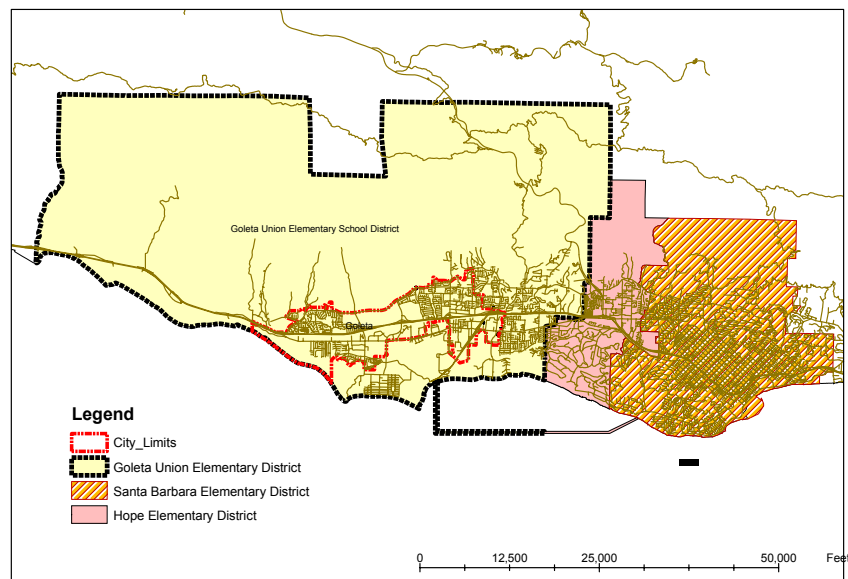
GENERAL PLANNING IMPLICATIONS

A close relationship exists between land use and schools. Planned land uses and related growth affects the potential need for schools. If additional growth in family households is planned for an area where there is already growing enrollments and school capacity is limited, such growth will require new facilities. If, however, there are declining enrollments, additional household growth may be accommodated by the existing facilities. General planning, then, not only needs to assess the growth potential associated with planning measures, but general planning also needs to assess the capacity of the school system and enrollment trends.

Conversely, the quality and location of schools potentially affect the desirability of various residential areas. Quality schools increase the appeal of an area as a residential location while schools performing less well can have the opposite effect. As such, schools are frequently considered an important influence on property values.

The specific location of schools can also impact immediate uses. Homeowners often consider it desirable to locate near elementary schools and elementary schools can be important facets of neighborhood identity, character and quality. In contrast, since high schools induce traffic, the location of high schools needs to be in areas that can accommodate additional traffic.

Elementary School Districts in Goleta/Santa Barbara Area
2003



City of Goleta, California; August 2003

GOLETA UNION SCHOOL DISTRICT

Facilities

The District owns ten schools - Brandon, El Camino, El Rancho, Ellwood, Foothill, Hollister, Isla Vista, Kellogg, La Patera and Mountain View. In addition, offices and central kitchen facilities are housed in a former elementary school on North Fairview Avenue owned by the District. Portions of this site are also leased to other tenants, including a small, private school. The District also owns a vacant school site off of Phelps Road and a bus and maintenance yard on Hollister Avenue next to the Goleta Community Center.

Five elementary schools, Brandon, El Rancho, Ellwood, Kellogg and La Patera, are located within City boundaries. However, all ten schools serve students that live within City boundaries because the school attendance boundaries overlap City boundaries. Also, GUSD attendance policies allow for intra-district transfers.

Enrollment by Sub-Area: October 2003

| School | Area | Enrollment | School | Area | Enrollment |
|------------------|---------------------------------|------------|----------------------|-----------------------|-------------|
| Brandon | | 483 | Hollister | | 482 |
| | Immediate Vicinity | 177 | | Immediate Vicinity | 325 |
| | Trailer Park | 32 | | East of Turnpike | 72 |
| | Immediate Vicinity (ER) | 144 | | More Mesa | 18 |
| | Winchester Canyon Valley | 30 | | West of Patterson | 17 |
| | Apartments on Cathedral Oaks | 22 | | Close to Hope Ranch | 10 |
| | E. of Brandon Dr., N. of Padova | 35 | | Transfers | 40 |
| | Glen Annie Canyon | 9 | Isla Vista | | 552 |
| | Transfers | 34 | | Immediate Vicinity | 264 |
| El Camino | | 297 | | University Housing | 70 |
| | Immediate Vicinity | 56 | | Storke Ranch | 89 |
| | Positano & Other Apartments | 84 | | West of Storke | 64 |
| | Downtown | 78 | | Pacific Glen | 22 |
| | East of San Marcos H.S. | 32 | | Willow Springs | 11 |
| | Patterson Avenue | 8 | | Transfers | 32 |
| | Transfers | 39 | Kellogg | | 417 |
| Ellwood | | 472 | | Immediate Vicinity | 334 |
| | Immediate Vicinity | 264 | | Downtown | 61 |
| | Trailer Park | 63 | | Transfers | 22 |
| | Embarcadero | 36 | La Patera | | 486 |
| | Mobil Gas Station Area | 44 | | Immediate Vicinity | 237 |
| | Ranches | 26 | | Downtown | 225 |
| | Transfers | 39 | | Transfers | 24 |
| Foothill | | 343 | Mountain View | | 382 |
| | Immediate Vicinity | 198 | | Immediate Vicinity | 224 |
| | San Marcos Road | 27 | | San Marcos Pass | 44 |
| | East of Turnpike | 83 | | E. of San Marcos Road | 71 |
| | Transfers | 35 | | Transfers | 43 |
| | | | | SH | 15 |
| | | | | GFS | 46 |
| | | | Total | | 3975 |

Source: Goleta Union School District

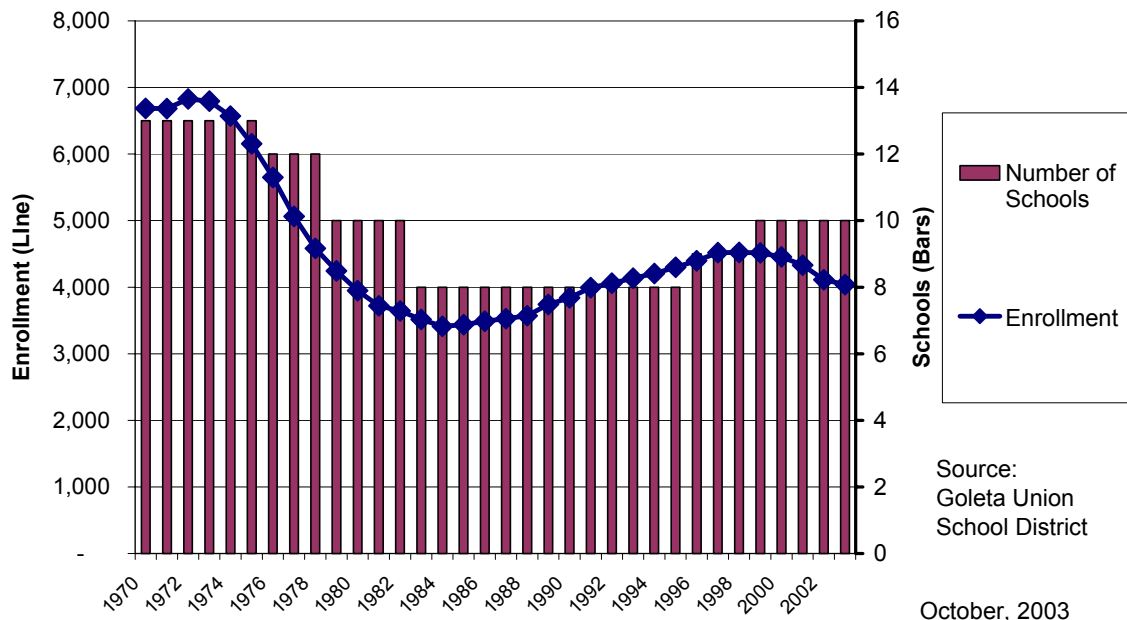
All GUSD schools have undergone a number of renovations and upgrades due to the passage in 1996 of a \$26 million school bond. Combined with state funds,

Isla Vista school was totally rebuilt to accommodate up to 700 students. Bond monies have also paid for many structural improvements at all the other school campuses, with some projects still in process.

Enrollment

Goleta Union had its origins in 1925 when local residents voted to consolidate three small elementary schools into one school district. The Rafaela School (1869, later renamed the Goleta school), Cathedral Oaks school (1877) and La Patera school (1877) formed the new district. Over time, the growth of the District mirrored that of the surrounding Goleta area, with the district building between 1957 and 1969 eleven new schools, and adding one (Ellwood School) by annexation in 1966. By 1972, the District was operating thirteen schools with a total enrollment of 6,827 students.

City of Goleta, California
**Goleta Union School Enrollment and Schools
 1970-2002**



Enrollment numbers began to decline between 1973 and 1984 until the District was educating a student population of 3,413 in eight schools. School populations again began to rise until 1998 when total student enrollment peaked at 4,521. In the last five years, the numbers of students have, once again, started to decline. For the 03-04 school year, enrollment totals 3,937 in nine schools.

In February of 2003, the District Superintendent recommended that the school board trustees close a school, effective July 1, 2003, in order to partially address an anticipated budget shortfall for the 03-04 school year. The Superintendent

indicated that, besides the anticipated loss of State funding which directly affected the District's budget, a continued decline in the numbers of students was projected. The Superintendent cited the loss of 411 students, a 9.1% decline in enrollment since 1999. District estimates for housing units under construction did not generate a projection of a significant number of new students. The high price of housing was also noted as a growing impediment for families with children to locate into the area.

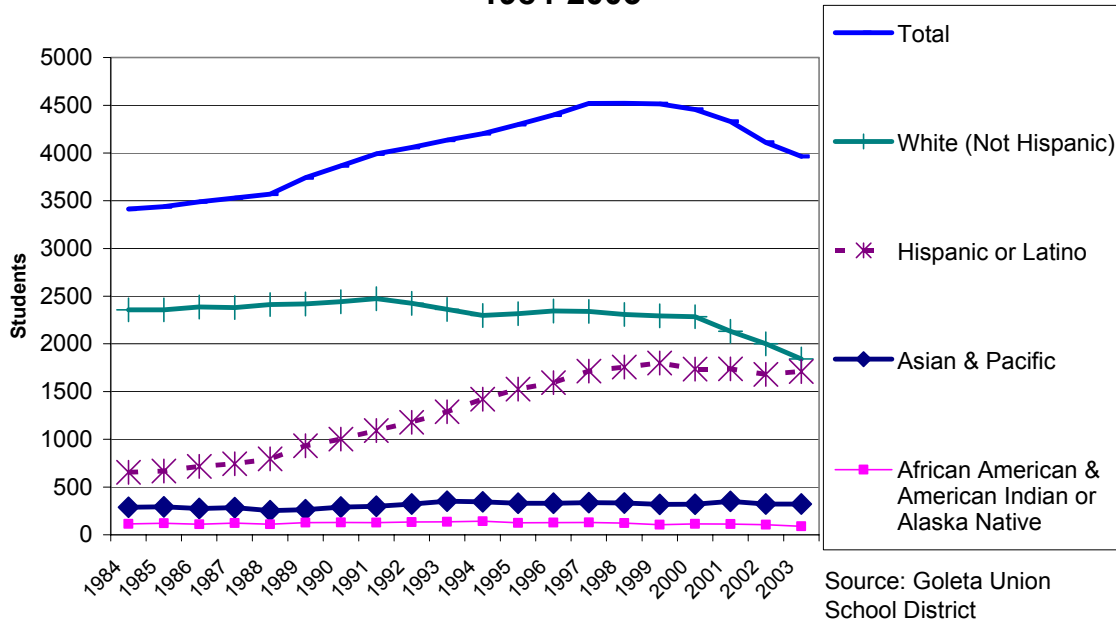
Although a report in May to the school board indicated that revised figures from the State showed more funds coming to the District than had been foreseen in February, the District continued to recommend the closure of one school, due to the high cost of maintaining schools with small populations. In June the Goleta Union trustees voted to close El Rancho School, with 315 students moving to the Brandon and Ellwood sites commencing September of 2003.

Enrollment Summary: 1996 - 2003

| Staffing Day | 1996 | 1997 | 1998 | 1999 | 2000 | 2001 | 2002 | 2003 | Net from 2002 |
|-------------------|------|------|------|------|------|------|------|------|---------------|
| Brandon | 244 | 292 | 309 | 320 | 314 | 334 | 306 | 484 | 178 |
| El Camino | 0 | 0 | 0 | 285 | 332 | 316 | 295 | 287 | -8 |
| El Rancho | 404 | 389 | 390 | 384 | 377 | 341 | 315 | 0 | -315 |
| Ellwood | 463 | 498 | 515 | 509 | 484 | 453 | 380 | 461 | 81 |
| Foothill | 471 | 515 | 585 | 404 | 374 | 383 | 376 | 327 | -49 |
| Hollister | 600 | 582 | 588 | 555 | 549 | 525 | 492 | 468 | -24 |
| Isla Vista | 590 | 605 | 556 | 583 | 555 | 572 | 536 | 529 | -7 |
| Kellogg | 435 | 449 | 437 | 433 | 446 | 452 | 426 | 405 | -21 |
| La Patera | 609 | 588 | 584 | 487 | 469 | 439 | 474 | 482 | 8 |
| Mountain View | 416 | 425 | 398 | 397 | 398 | 376 | 371 | 370 | -1 |
| Family School | 46 | 47 | 44 | 43 | 44 | 46 | 47 | 46 | -1 |
| K-6 Sub-Total | 4278 | 4390 | 4406 | 4400 | 4342 | 4237 | 4018 | 3859 | -159 |
| Special Day Class | 96 | 107 | 110 | 108 | 100 | 103 | 97 | 78 | -19 |
| District | 4374 | 4497 | 4516 | 4508 | 4442 | 4340 | 4115 | 3937 | -178 |

Source: Goleta Union School District

Goleta Union School Enrollment by Minority Status 1984-2003



The ethnic makeup of the student population has shifted over time. From 1984 to the present the percentage of white students has declined from 69% to 49% of total enrollments while the Hispanic population has increased from 19% to 41% of students overall. The percentage of African American students has declined from 3% to 2%. Asian students showed a percentage decline from 8% to 7% even though real numbers show an increase from 274 to 318. The percentages for American Indians, Pacific Islander and Filipino students have stayed relatively the same at 1% or less of the 2002 enrollment of 4,110 students.

Academic Achievement

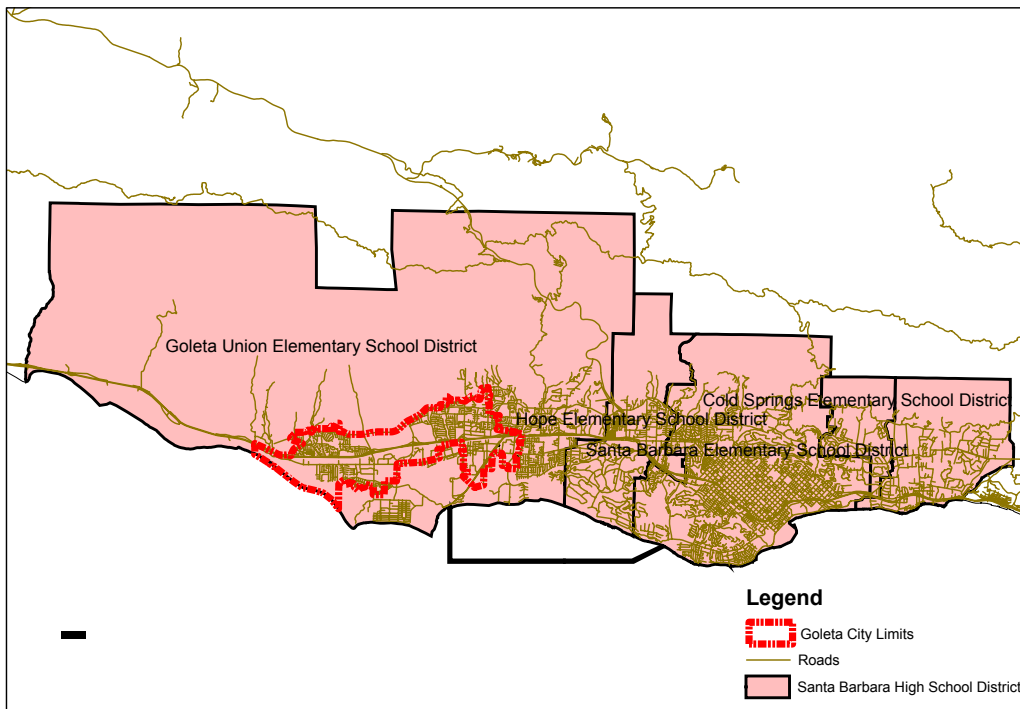
The Goleta District has a long reputation for high academic achievement, with most schools scoring well above the national average and some in the top 25%. The overall excellence of the District’s neighborhood schools is often named as one of the reasons why new residents want to live in Goleta.

GOLETA VALLEY JUNIOR HIGH

Facilities

Goleta Valley Junior High opened in 1964 with a 23 acre campus. The school has 52 credentialed teachers out of a total staff of 91. Current facilities include two classroom wings, an Industrial Technology wing, a Performing Arts wing, a 500 seat Auditorium, a wing with Administration offices, a 24,000 volume library, a Computer Lab, a Cafeteria, and a Boy's and Girl's Physical Education area. In addition, one quadraplex portable classroom houses the developmentally/physically disabled programs for the County Education office, as well as regular education classes. Since the school opened, seventeen portable classrooms have been added, five of which are over 25 years old. Currently, the school's student capacity is estimated at 1,185 students. The Santa Barbara School District measures capacity by multiplying the number of classrooms by 27 students per room. Special education classrooms have a 1 to 13 ratio. All portable classrooms are counted towards the maximum capacity.

Santa Barbara High School District
2003



City of Goleta, California; October 2003

In 1998, the Santa Barbara School District was successful in passing Measure V, a \$67 million bond measure to renovate and upgrade all the junior high and high school facilities. There are three phases of renovations planned for Goleta Valley Junior High. The first phase will cover the administrative offices, library,

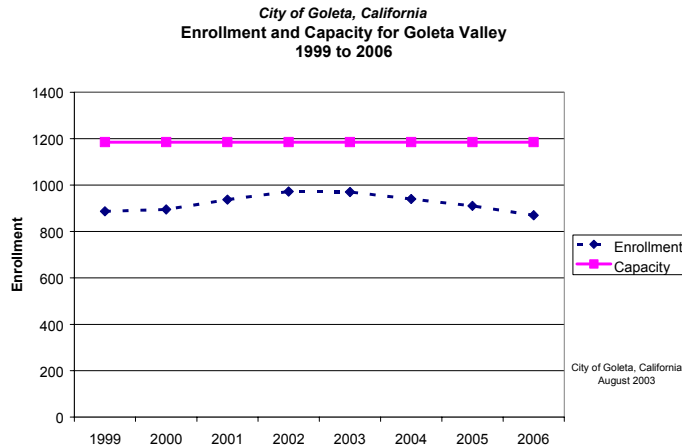
staff room and kitchen. The second phase will be classrooms and the theater. And the third phase will continue with classrooms, shops, music rooms, P. E. fields and new science labs. Construction will continue through September of 2004. Plans for removing the existing portables are indefinite, pending the impacts of decreasing enrollment and the possible move of the Charter School to a different location.

Enrollment

Goleta Union School District sixth grade graduates attend either Goleta Valley Junior High or La Colina Junior High Schools. Brandon, Ellwood, Isla Vista, Kellogg, La Patera and some Mountain View sixth grade students attend Goleta Valley Junior High; El Camino, Foothill, Hollister and the remaining Mountain View students attend La Colina. Goleta Valley Junior High also accepts transfers from other attendance areas. The school had 972 students in attendance in October 2002, 499 seventh graders and 473 eighth graders. There were 498 white students, 14 African American, 368 Hispanic, 13 Filipino, 61 Asian, 17 American Indian and 1 Pacific Islander.

The school also houses the Santa Barbara Charter School with 199 students on campus and a Special Education program for County schools with about 17 students enrolled.

Enrollment has increased approximately 9% since 1999 when the number of students totaled 887. Enrollment projections show 970 students in attendance in the Fall of 2003. The following years are anticipated to have fewer students, with enrollment projected at 940 for '04, 910 for '05 and 870 for '06. These enrollment projections do not include the students located on campus for the special education and charter school programs, as the District could decide to move these programs to other locations as needed.



Academic Achievement

Goleta Valley Junior High earned recognition as a California Distinguished School in 1999 and a National Blue Ribbon School of Excellence in 2000.

DOS PUEBLOS HIGH SCHOOL

Facilities

In 1967 Dos Pueblos High School opened its 40 acre school site. The campus contains 74 permanent classrooms, 11 portable classrooms, gymnasium, library, outdoor amphitheater, cafeteria, 6 computer labs, and 1 reading and foreign language lab. Although the original plans called for an auditorium and stadium, they were not included in the final construction due to budget constraints.

The designated capacity of the school is 2,304 students, based on the same formula given for Goleta Valley Junior High. The capacity figure includes the use of portable classrooms. At Dos Pueblos there are 102 certificated employees out of a staff of 173.

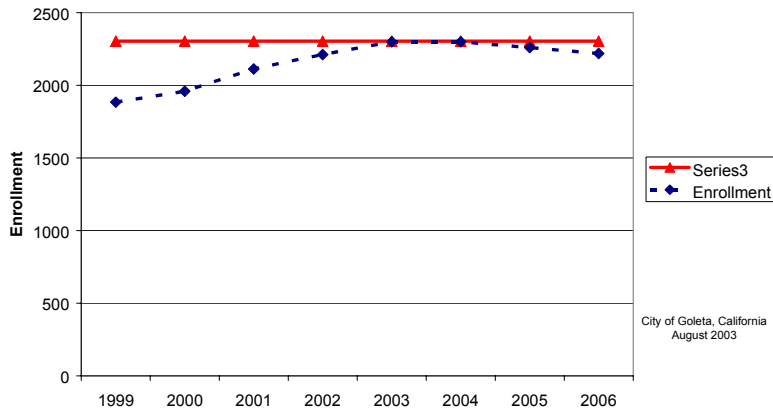
A large number of projects are ongoing to upgrade, refurbish and remodel the school as a result of Measure V. Some of the larger completed projects include the expansion of the student parking lot, replacing of the main water systems and a new phone system. Large projects on the horizon are the completion of the football stadium (lighting and additional bleachers), construction of an \$8 million performing arts center and a renovation of the swimming pool.

Enrollment

After the high school opened, enrollment figures rose and then fell. By 1990 the Santa Barbara School District considered closing the school due to low enrollment, although projections showed that it would be needed again in the future. Parents, students and staff at Dos Pueblos students organized and successfully lobbied the Santa Barbara School Board to keep the school open. The enrollment figures have continued to rise since 1990 and in the past 5 years enrollment has increased from 1,718 to the current student population of 2,275.

In October of 2003 there are 618 freshmen, 627 sophomores, 524 juniors and 506 seniors. Enrollment numbers included 28 American Indian students, 46 African-American students, 147 Asian students, 645 Hispanic and 1,375 Anglo students.

City of Goleta, California
**Enrollment and Capacity for Dos Pueblos High School
 1999 to 2006**

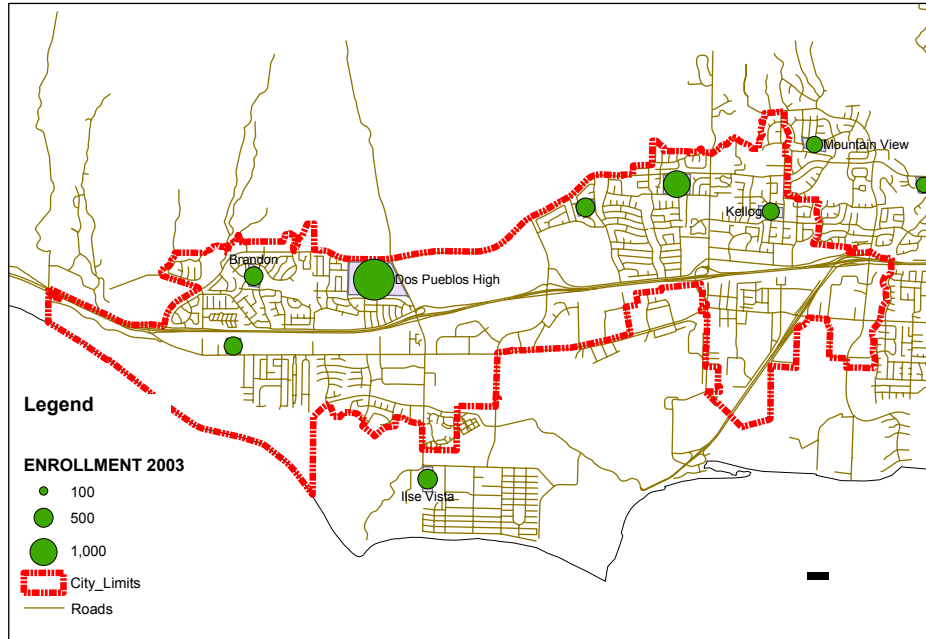


The district anticipates that Dos Pueblos may increase by about 50 students next year but then will level off with a decline in enrollment beginning in 2005-06.

Academic Achievement

Dos Pueblos has a very high student retention rate compared to other high schools. The dropout rate is much lower (2%) than the state average (16%). For the past eight years Dos Pueblos test scores have been the highest in the County and the school places in the top 10% of all high schools in California according to the Academic Performance Index. Dos Pueblos was named a California Distinguished School in 1988 and in 1998, and a National Blue Ribbon School of Excellence in 2000.

School Enrollment in Public Schools
City of Goleta, California
2003



City of Goleta, California; October 2003

PRIVATE SCHOOLS

Within the boundaries of the City of Goleta there are also a number of private schools of varying sizes: Montessori Center School has 130 students enrolled in grades 1-6. Coastline Christian Academy is a K-8 school with a projected enrollment for Fall 2003 of approximately 110 children. Their permitted capacity is approximately 144 students. St. Raphael's Elementary educates students from Kindergarten through eighth grade and has a capacity limit of 290 students. 288 students are enrolled for the '03-'04 school year. There are approximately two dozen Goleta students who are home-schooled

PLANNING IMPLICATIONS FOR THE CITY OF GOLETA

Dos Pueblos High School and Goleta Valley Junior High are both located with unconstrained access from major arterials serving the city. Most public elementary schools are also well situated to serve the neighborhoods north of Highway 101. The schools south of the freeway are not as favorably located. There are no elementary schools in the Goleta Old Town area and Ellwood Elementary is separated from its neighborhood by busy Hollister Avenue. However, a major obstacle to serving these neighbors is the flight path for the

Santa Barbara Airport which constrains where elementary schools may be located.

Land use planning in the City of Goleta will directly impact area schools. Amounts and types of new and rehabilitated housing, as well as how it is distributed throughout the city, could trigger changes in enrollment projections, staffing, space and school facility needs. While some capacity to accommodate growth is available for elementary and junior high school, capacity for the high school is much more constrained. According to current enrollment projections, Dos Pueblos will be at or over capacity for the next five years. Fee amounts for new development are set by the State Legislature and do not cover the full costs of the impact. City planning staff and school district representatives will need to keep each other informed of decisions which affect each jurisdiction's planning process and work together to resolve any issues that might arise.