



DESIGN REVIEW BOARD Staff Report

Agenda Item F-3

Meeting Date: December 14, 2010

TO: Goleta Design Review Board
FROM: Shine Ling, Assistant Planner; Phone Number: 961-7548
SUBJECT: 10-127-DRB; Pacific Diagnostics Laboratories Signage
454 South Patterson Avenue; APN 065-090-013

PROJECT DESCRIPTION:

This is a request for *Conceptual/Preliminary/Final* review. The property includes three commercial/industrial buildings totaling 50,306 square feet of floor area on a 7.95-acre site in the PI zone district. The applicant proposes to construct a 32-square foot monument sign and a 34-square foot wall sign for the building at the front of the property. The monument sign structure would be 5.8 feet wide by 5.5 feet tall by 1.25 feet thick and would be constructed of a painted aluminum cabinet painted semi-gloss white and gray. The monument sign would be double-sided and display the Pacific Diagnostics Laboratories logo and the street address of the property using push-thru internally illuminated blue acrylic letters. The monument sign lettering will vary between 3 to 8.25 inches tall. The wall sign would be installed on the north elevation of the building above the patient entrance canopy. The wall sign would be constructed of non-illuminated blue aluminum letters that are 2 inches thick and mounted 0.25 inches off the wall surface. The wall sign would display the Pacific Diagnostics Laboratories logo and would be 11.7 feet wide by 2.9 feet tall, with logo lettering height varying between 8 to 24 inches tall. The project was filed by Sarah Braun of Englund Designworks, agent, on behalf of Somera Patterson LLC, property owner, and Pacific Diagnostics Laboratories, tenant. Related cases: 10-127-SCC; 10-128-SCC.

ATTACHMENTS:

- Reduced 11" x 17" copies of site plans and elevations.



Exterior & Interior Sign Program

8/23/10

RECEIVED

OCT 20 2010

City of Goleta
Planning & Environmental Svcs.

e n g l u n d DESIGNWORKS i n c.
2520 Stanwell Dr. Concord, CA 94520 p 925 682-3646 f 925 6825464 edi@englunddesignworks.com

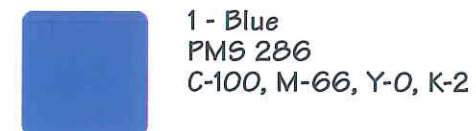
COPYRIGHT © 2010 Englund Designworks Inc.

Aug. 23, 2010
Job #: CHS1002

Project Logo
Logo Font Avenir



Project Colors & Finishes



1 - Blue
PMS 286
C-100, M-66, Y-0, K-2



2 - Green
PMS 361
C-69, M-0, Y-100, K-0



3 - White acrylic



4 - White gloss vinyl



5 - Satin Aluminum

6 - Mirror Polished Aluminum

INTERIOR SIGN Message Font Frutiger 57

ABCDEFGHIJKLMNOPQRSTUVWXYZ
abcdefghijklmnopqrstuvwxyz
0123456789

EXTERIOR SIGN Message Font Optima Condensed

ABCDEFGHIJKLMNOPQRSTUVWXYZ
abcdefghijklmnopqrstuvwxyz
0123456789

ARROW

Arrow & Text Size Relationship

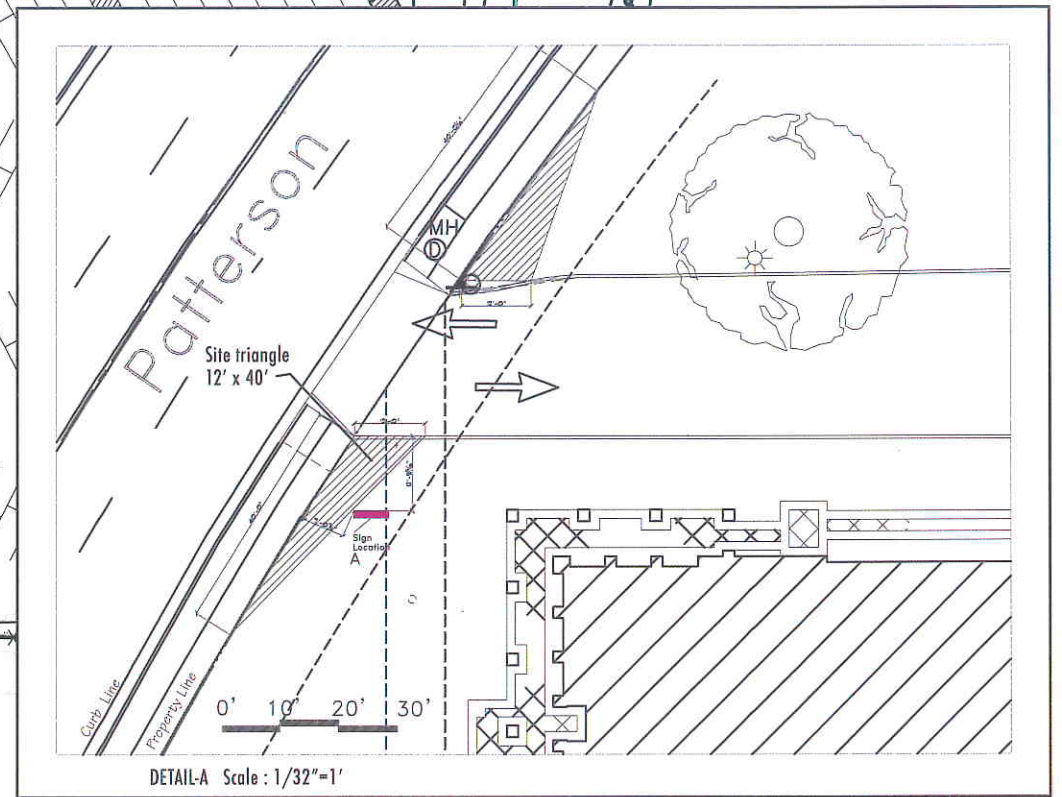
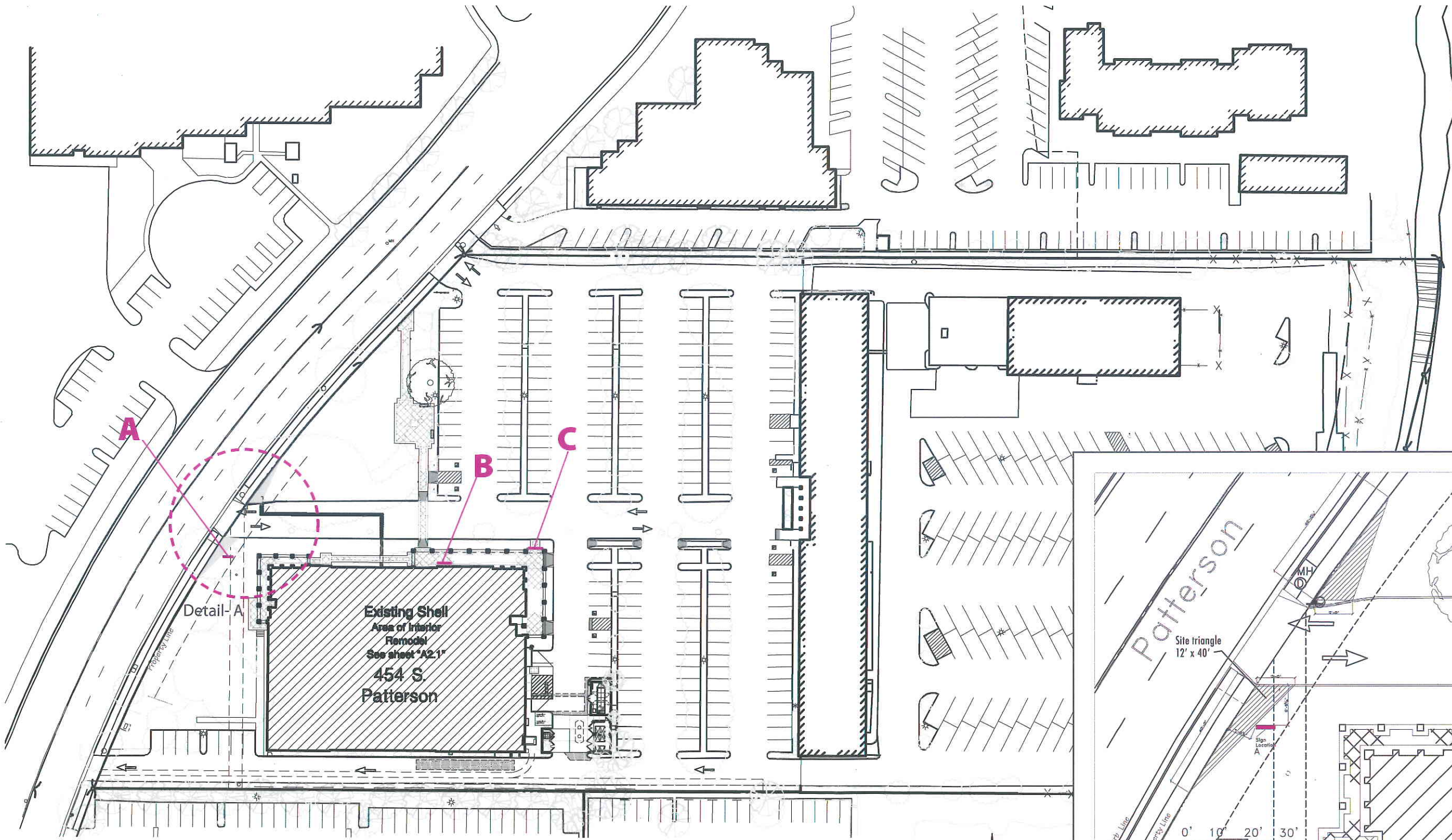


Exterior Sign Location Plan

LOCATION A
internally illuminated
double sided free
standing monument
sign.

LOCATION B
Non-illuminated
dimensional letters
mounted to the face
of the building.

LOCATION C
Non-illuminated
dimensional letters
mounted to the face
of the building.



Site Plan

0 30' 60'



DETAIL-A Scale: 1/32"=1'

Text shown in drawing may be for illustration purposes only. Refer to Sign Message Schedule for correct text.

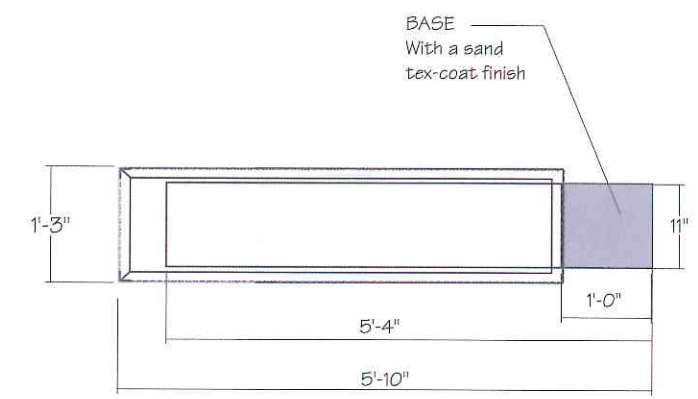
MONUMENT SIGN

SIGN TYPE:
ST2.01
 Entry Identification
 Exterior Sign

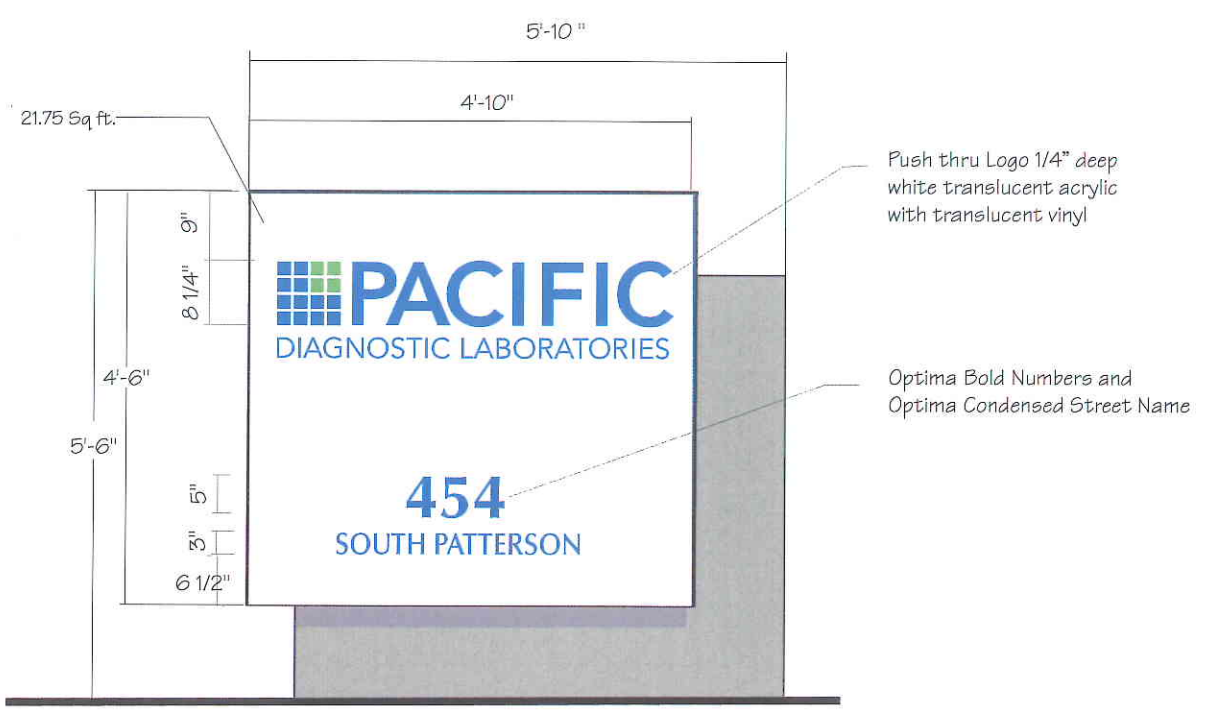
SIZE: 5'-6" high
USE: Site Identification
 information
TEXT AREA: 21.75 sqft
LOCATION: A

**Freestanding
 Monument Sign**

LOCATION A
 Double sided free standing illuminated monument sign.
 Painted luminum cabinet with aluminum sign face. Color semi gloss white.
 Letters and logo are route out of the aluminum sign face.
 Push thru acrylic letters protruding 1/4".
 Graphic colors to match logo.
 Base element aluminum with a sand finish tex-coat texture.
 Color to match building (to be advised)
 Sign is to sit on a concrete pad level with grade.
 Pad is to extend out 4" beyond sign on all sides.
 Shut off switch to be on building side.
 Available power 120 volts.



TOP VIEW



BACK SIDE, SOUTH ELEVATION



SIGN TYPE: ST2.01

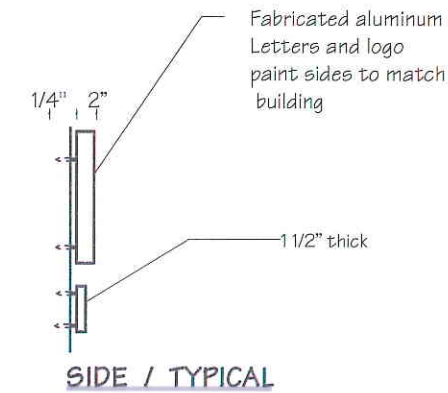
NORTH ELEVATION / TYPICAL
 SCALE: 1/2" = 1'-0"

Design plans & ideas expressed in this drawing are confidential property of Englund Designworks. Nothing in this drawing is to be reproduced, copied or disclosed to any person or entity without written permission of Englund Designworks.

LOCATION B
 Sign Type ST7.05
 35 sq.ft. Area
 Non-illuminated dimensional letters and logo mounted to the face of the building.



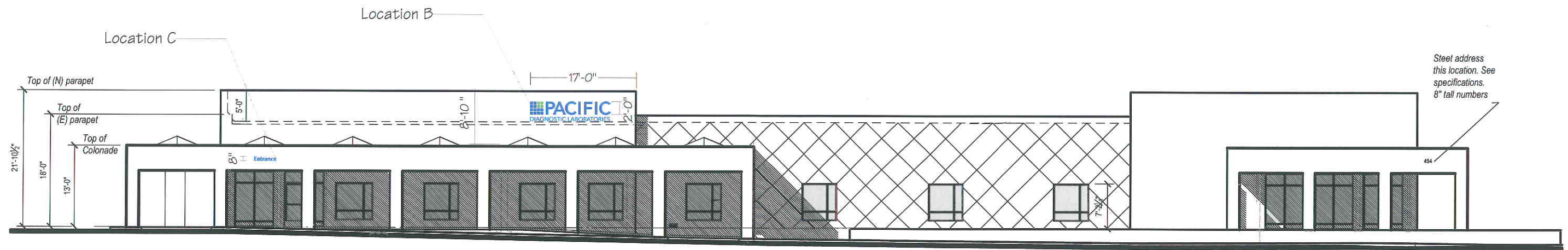
FRONT VIEW
 SCALE: 3/8" = 1'-0"



LOCATION C
 Sign Type ST7.06
 2.7 sq.ft.
 Non-illuminated dimensional letters 8" H x 1" D, painted blue to match logo and mounted to the arcade face of the building. Optima Bold type face.



FRONT VIEW
 SCALE: 3/8" = 1'-0"



A NORTH ELEVATION
 1/16" = 1'-0"

BUILDING LETTERS

SIGN TYPE:
 ST7.05
 Non-illuminated Dimensional Letters

USE: Building Identification.
 SIZE: 2' 10 1/2" high x 11' 8 3/8" wide
 AREA: 35 sq ft

TYPE: Logo & Type
 COLORS: See call outs
 PRODUCT DESCRIPTION:
 Fabricated Letters
 LOCATION: B

SIGN TYPE:
 ST7.06
 Non-illuminated Dimensional Letters

USE: Entrance Identification.
 SIZE: 8" high letters x 4' long
 AREA: 2.7 sq ft

TYPE: Optima Bold
 COLORS: See call outs
 PRODUCT DESCRIPTION:
 Fabricated Letters
 LOCATION: C