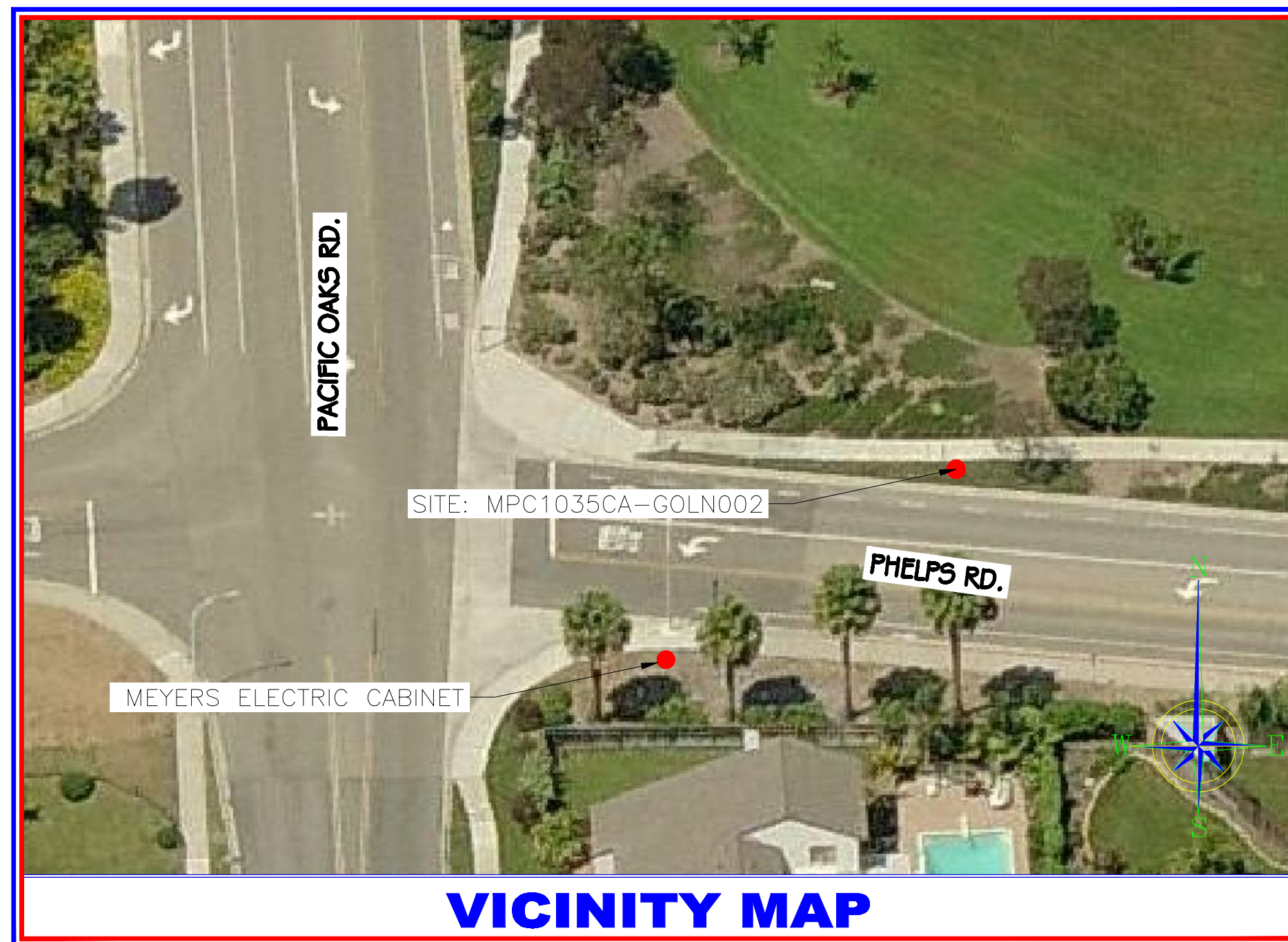


**NextG Networks, Inc.**  
**MPC1035CA-GOLN002**  
**GOLETA**  
**GOLETA, CA 93117**



ALL WORK AND MATERIALS SHALL BE PERFORMED AND INSTALLED IN ACCORDANCE WITH THE CURRENT EDITIONS OF THE FOLLOWING CODES AS ADOPTED BY THE LOCAL GOVERNING AUTHORITIES. NOTHING IN THESE PLANS IS TO BE CONSTRUED TO PERMIT WORK NOT CONFORMING TO THE AREAS GOVERNING CODES.

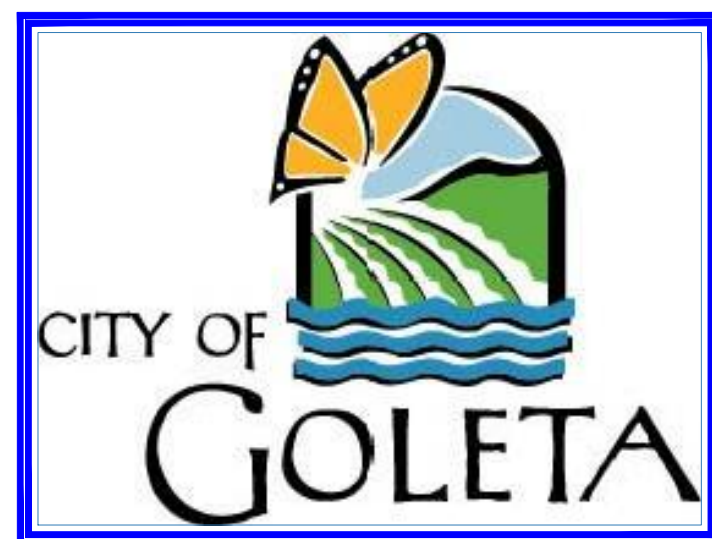
1. STATE ADMINISTRATIVE CODE	5. STATE PLUMBING CODE
2. STATE BUILDING CODE	6. STATE ELECTRIC CODE
3. ANSI/EIA-222-F LIFE SAFETY CODE NFPA-101-1990	7. LOCAL BUILDING CODE
4. STATE MECHANICAL CODE	8. CITY/COUNTY ORDINANCES

**CODE COMPLIANCE**

**PROPERTY INFORMATION**

CUSTOMER: NEXT G NETWORKS INC.  
 PROJECT: EAST SANTA BARBARA  
 NODE: MPC1035CA-GOLN002  
 LATITUDE: 34.42537  
 LONGITUDE: -119.87682  
 STREET ADDRESS: N/E/C OF PACIFIC OAKS AND PHELPS RD.  
 CITY, STATE: GOLETA, CA 93117  
 JURISDICTION: CITY OF GOLETA  
 POLE # : NEW POLE  
 POLE TYPE: METAL POLE  
 RAD CENTER / ANTENNA HEIGHT: 27'-5"  
 ANTENNA TYPE: AWS360-1710-7-T0-N  
 AZIMUTH FOR ANTENNA: N/A  
 POWER TO POLE: SECONDARY  
 POLE ACCESS: ON ROAD  
 POLE OWNER: N/A  
 POLE LOCATION & DESCRIPTION: N/E/C OF PACIFIC OAKS AND PHELPS RD.

**PROJECT SUMMARY**



THE PROJECT CONSISTS OF THE INSTALLATION AND OPERATION OF ANTENNAS AND ASSOCIATED EQUIPMENT CABINETS FOR NEXTG. THE INSTALLATION OF GROUND MOUNTED EQUIPMENT CABINETS, ANTENNAS ON AN EXISTING STREET LIGHT, WOOD POLE, TRAFFIC SIGNAL AND NEW STEEL POLES.

**PROJECT DESCRIPTION**

INSTALL / PLACE NEW FIBER TO NEW OR EXISTING POLE. INSTALL EITHER OMNI OR PANEL ANTENNAS AND ALL ASSOCIATED BRACKETS IN ACCORDANCE TO CONSTRUCTION SPECIFICATIONS. REARRANGE ANY EXISTING FACILITIES IN ACCORDANCE TO GOVERNING CONSTRUCTION GUIDELINES.

**PROJECT SCOPE**

SHEET	DESCRIPTION	REV.
1	TITLE SHEET	1
2	UTILITY NODE / REPEATER POLE EQUIPMENT PROFILES	1
3	MAPS	1
4	TYPICALS	1

**SHEET INDEX**

**DO NOT SCALE DRAWINGS**

CONTRACTOR SHALL VERIFY ALL PLANS AND EXISTING DIMENSIONS AND CONDITIONS ON THE JOB SITE AND SHALL IMMEDIATELY NOTIFY THE ARCHITECT IN WRITING OF ANY DISCREPANCIES BEFORE PROCEEDING WITH THE WORK OR BE RESPONSIBLE FOR SAME.

**GENERAL CONTRACTOR NOTES**


**NextG Networks, Inc.**  
 2216 O'TOOLE AVE.  
 SAN JOSE, CALIFORNIA 95131  
 PHONE: (408) 954-1580


PROJECT INFORMATION:  
**MPC1035CA-GOLN002**  
**GOLETA**  
**GOLETA, CA 93117**

CURRENT ISSUE DATE:  
**3/24/2010**

PERMIT SUBMISSION:

REV.	DATE	DESCRIPTION	BY

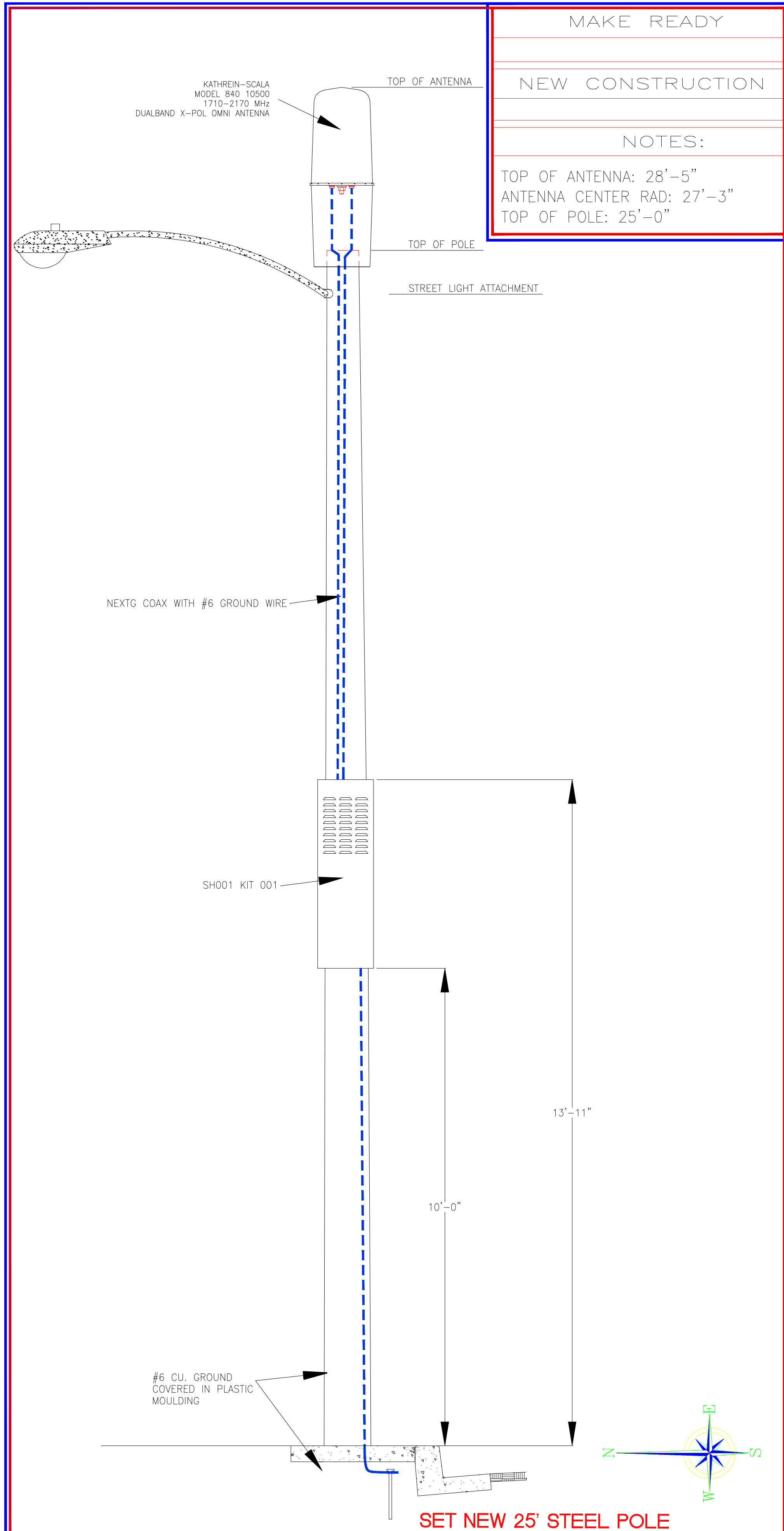
PLANS PREPARED BY:  
**HP COMMUNICATIONS INC.**  
 13341 Temescal Cyn. Rd.  
 Corona, CA 92883  
 PHONE: (951) 471-1919

PLANS APPROVED BY:  

**NextG Networks, Inc.**  
 REP:

COMMENTS:

SHEET TITLE:  
**TITLE SHEET**

SHEET NUMBER: **1** REVISION:  
**1 OF 4**



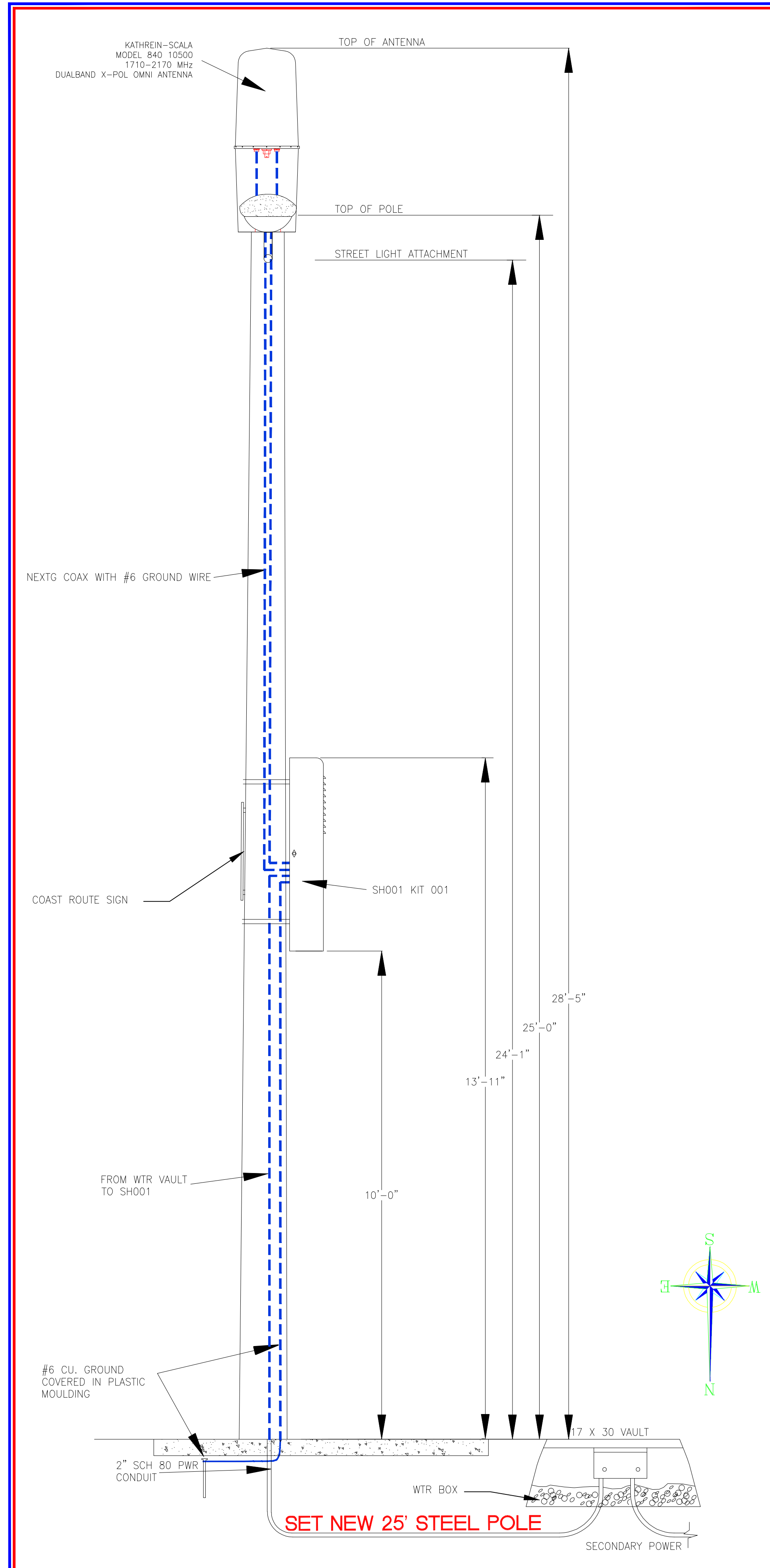
MAKE READY

NEW CONSTRUCTION

NOTES:

TOP OF ANTENNA: 28'-5"  
 ANTENNA CENTER RAD: 27'-3"  
 TOP OF POLE: 25'-0"

SCALE: METAL POLE DETAIL ID #NEW POLE  
 N.T.S. LOOKING EAST A



KATHREIN-SCALA  
 MODEL: 840 10500  
 DUALBAND X-POL OMNI ANTENNA

TOP OF ANTENNA

TOP OF POLE

STREET LIGHT ATTACHMENT

NEXTG COAX WITH #6 GROUND WIRE

SH001 KIT 001

COAST ROUTE SIGN

FROM WTR VAULT TO SH001

#6 CU. GROUND COVERED IN PLASTIC MOULDING

2" SCH 80 PWR CONDUIT

17 X 30 VAULT

WTR BOX

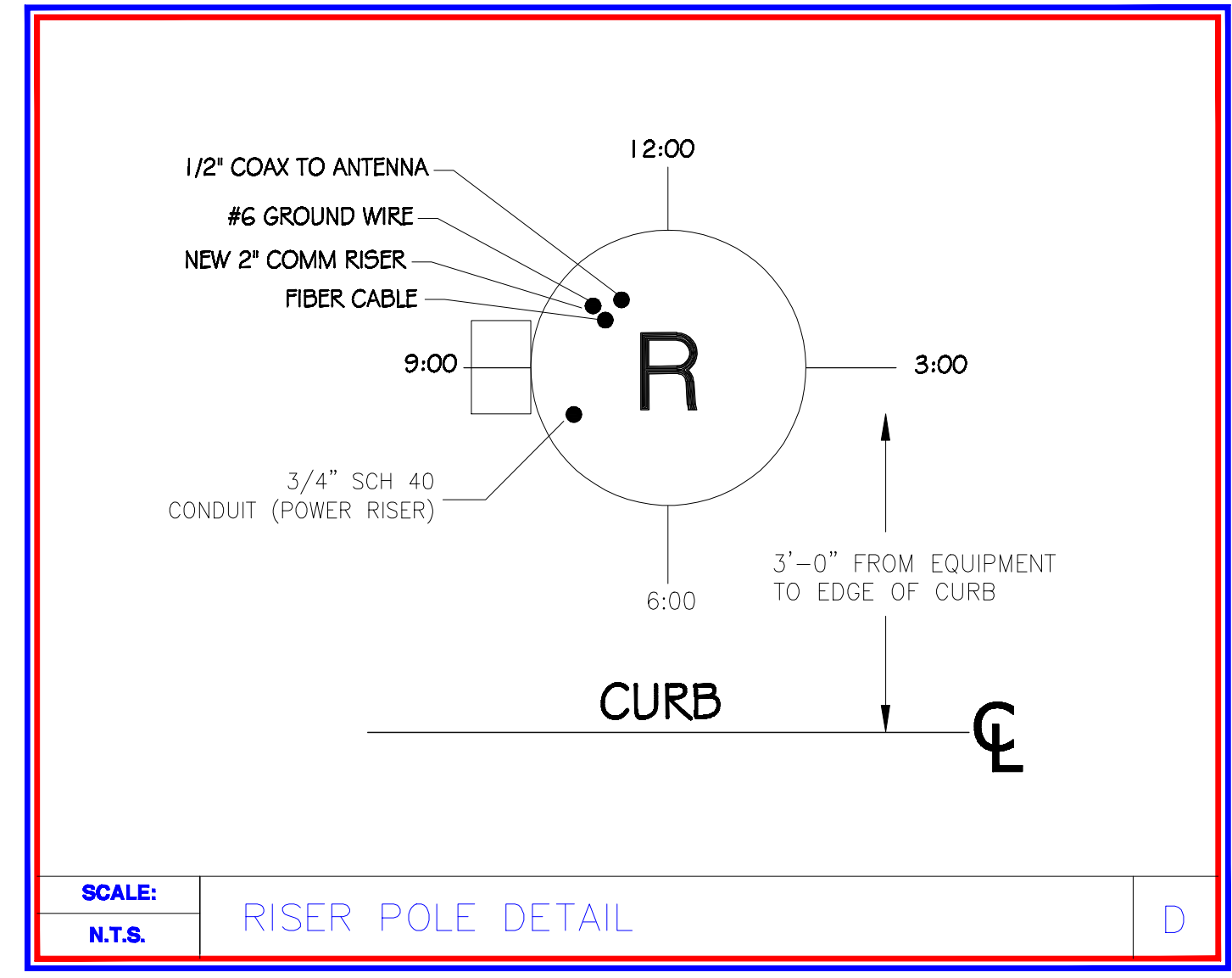
SECONDARY POWER

SET NEW 25' STEEL POLE

SCALE: METAL POLE DETAIL ID #NEW POLE  
 N.T.S. LOOKING SOUTH B



SCALE: N.T.S. SITE POLE PICTURE C



SCALE: N.T.S. RISER POLE DETAIL D

**DIGALERT**

1-800-227-2600

CALL AT LEAST TWO DAYS BEFORE YOU DIG

UNDERGROUND SERVICE ALERT OF NORTHERN CALIFORNIA

TICKET # \_\_\_\_\_

**NextG Networks, Inc.**  
 2216 O'TOOLE AVE.  
 SAN JOSE, CALIFORNIA 95131  
 PHONE: (408) 954-1580

PROJECT INFORMATION:

**MPC1035CA-GOLN002**  
**GOLETA**  
**GOLETA, CA 93117**

CURRENT ISSUE DATE:

**3/24/2010**

PERMIT SUBMISSION:

REV. DATE DESCRIPTION BY

REV.	DATE	DESCRIPTION	BY

PLANS PREPARED BY:

**HP COMMUNICATIONS INC.**

13341 Temescal Cyn. Rd.  
 Corona, CA 92883  
 PHONE: (951) 471-1919

PLANS APPROVED BY:

**NextG Networks, Inc.**

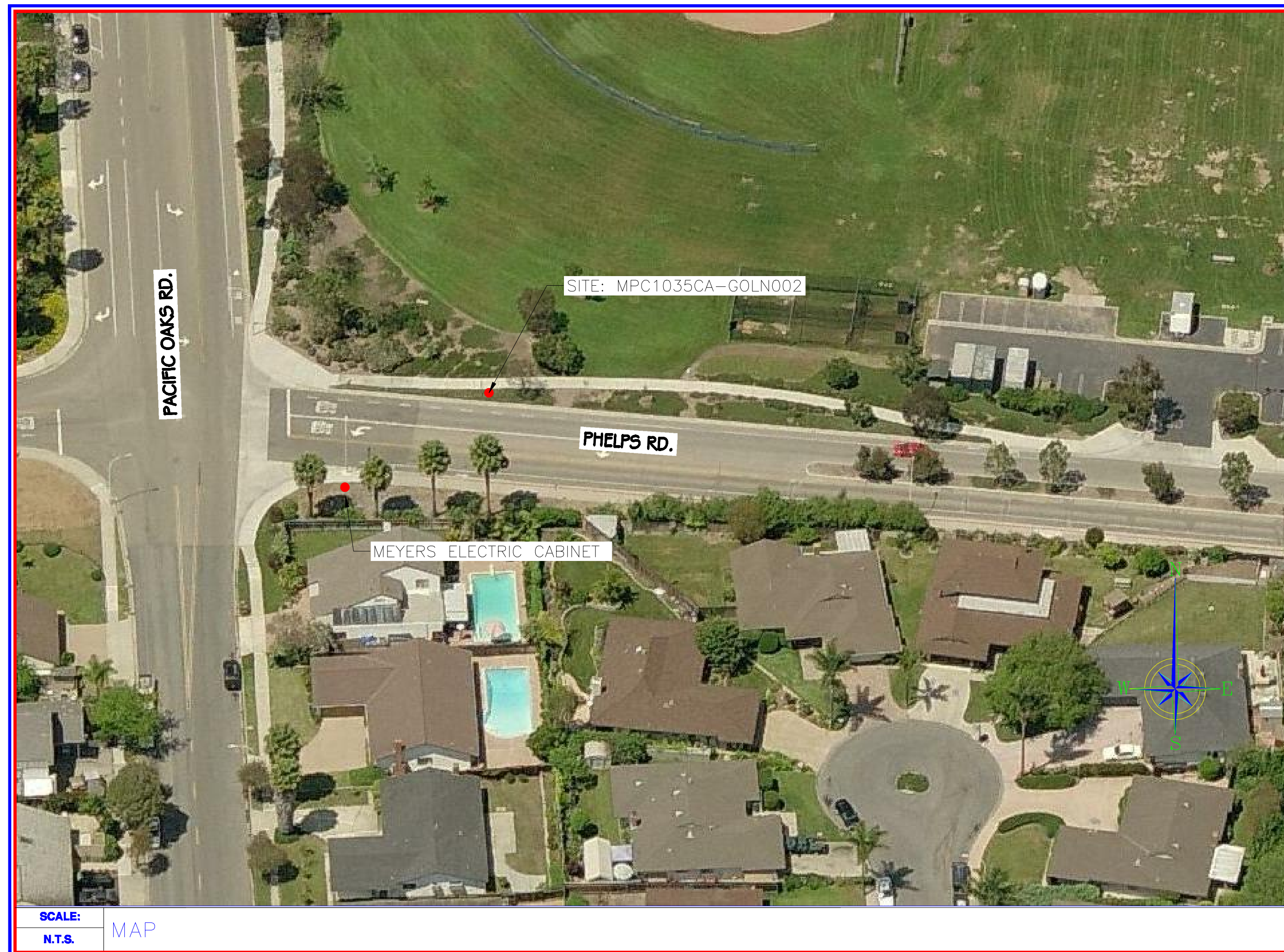
REP:

COMMENTS:

SHEET TITLE:

**PROFILES**

SHEET NUMBER: **2** REVISION: **2 OF 4**



PROJECT INFORMATION:

**MPC1035CA-GOLN002**  
**GOLETA**  
**GOLETA, CA 93117**

CURRENT ISSUE DATE:

**3/24/2010**

PERMIT SUBMISSION:

REV. DATE DESCRIPTION BY

REV.	DATE	DESCRIPTION	BY

PLANS PREPARED BY:

**HP COMMUNICATIONS INC.**

13341 Temescal Cyn. Rd.  
 Corona, CA. 92883  
 PHONE: (951) 471-1919

PLANS APPROVED BY:



REP:

COMMENTS:

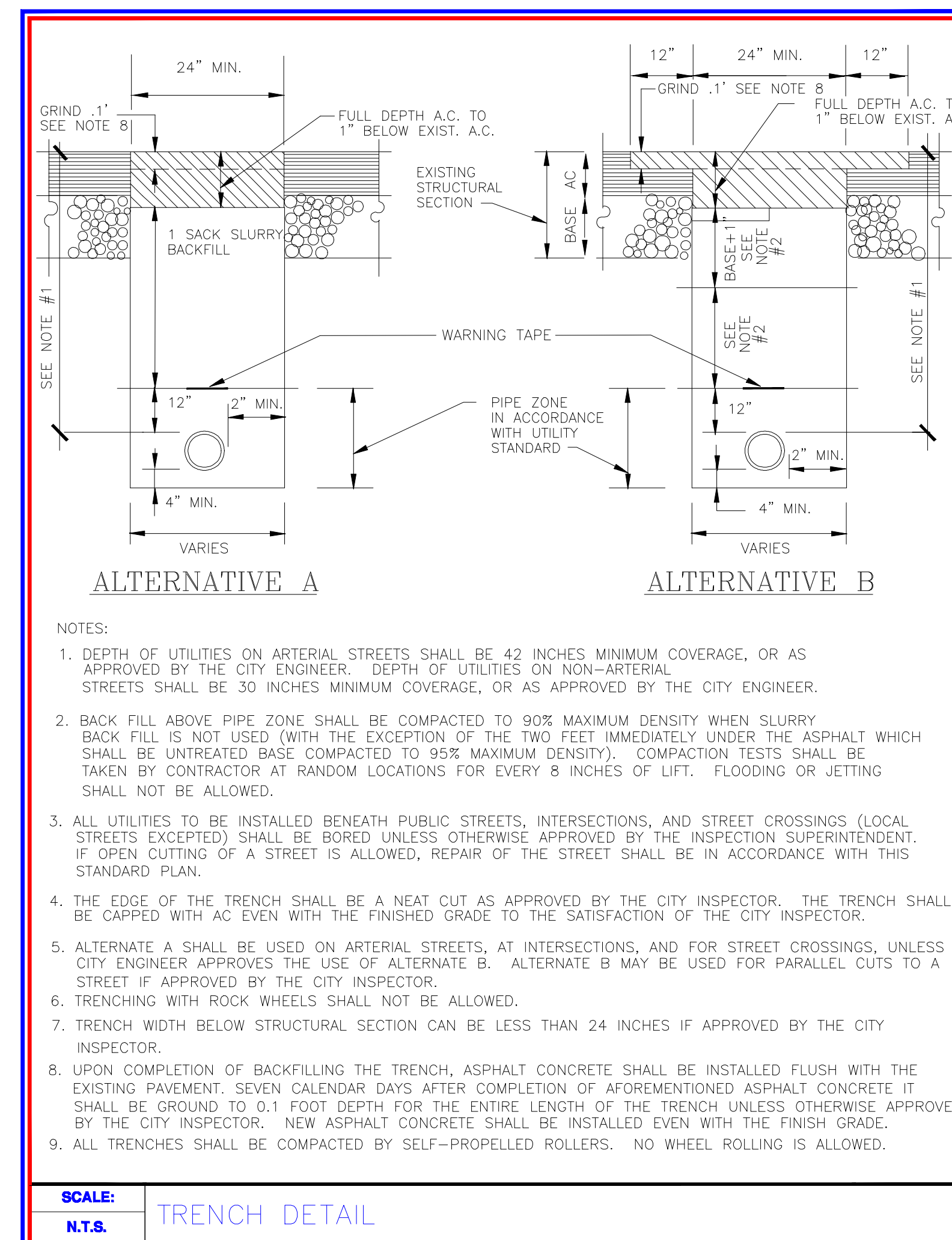
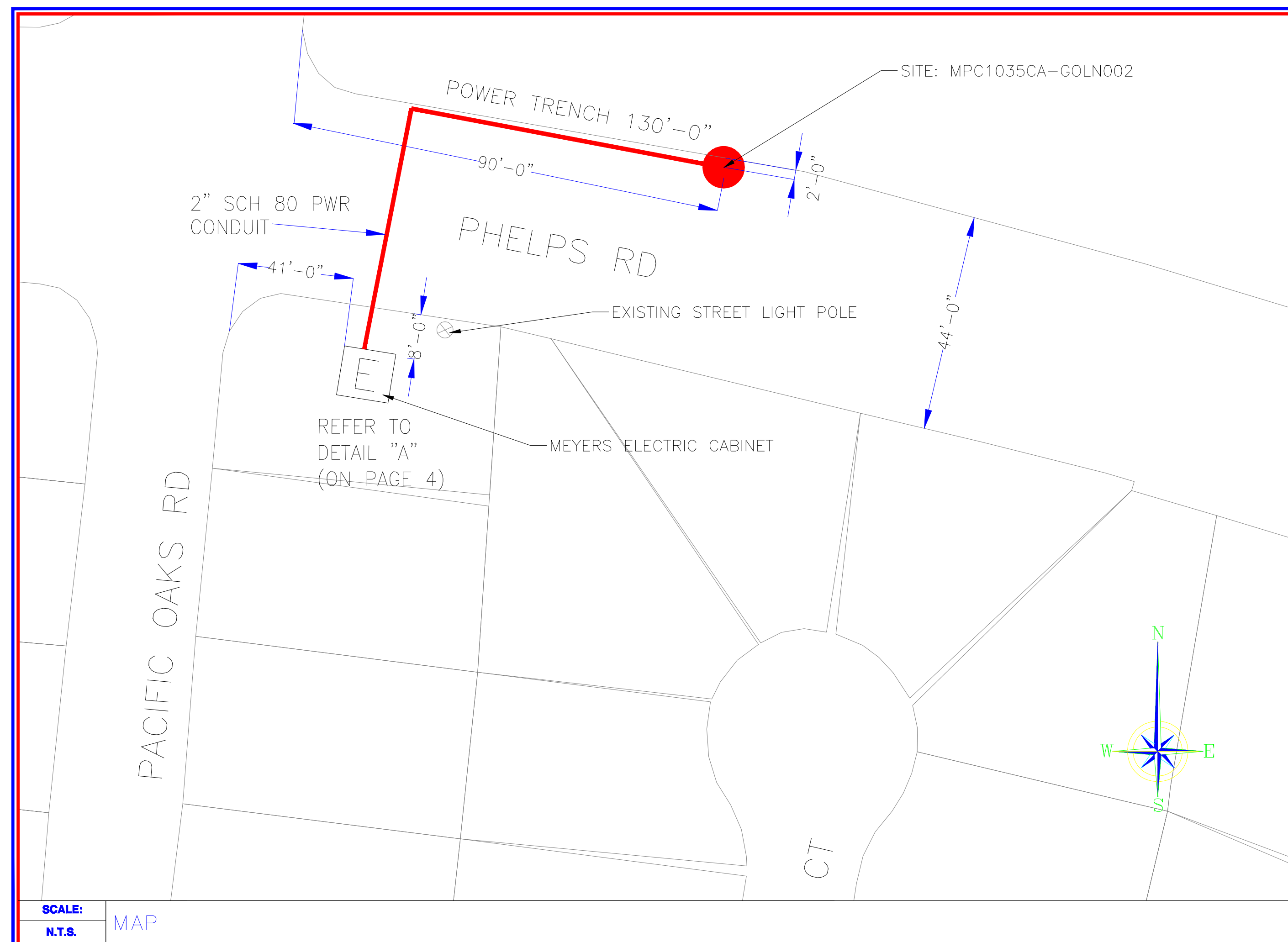
SHEET TITLE:

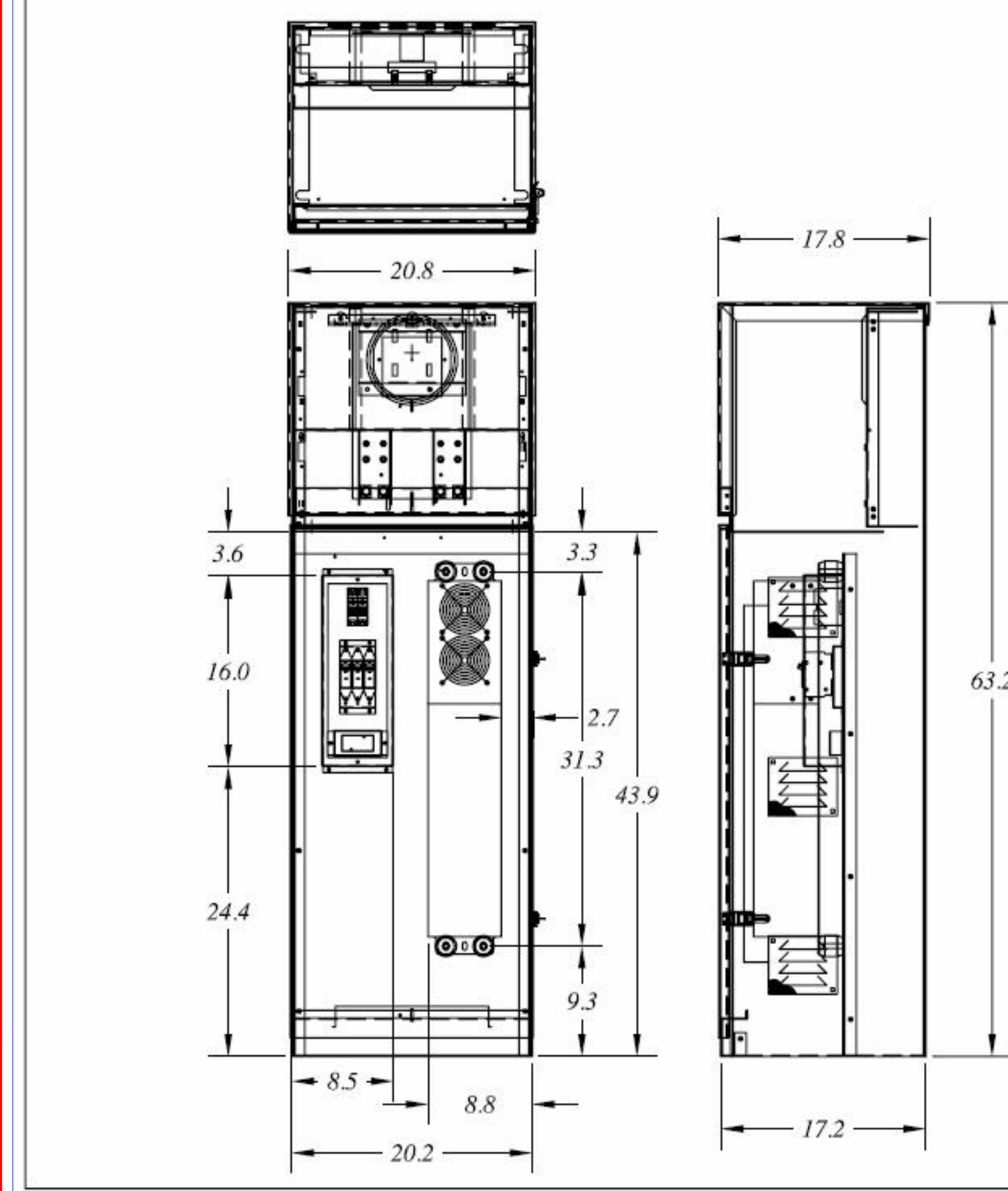
**MAP**

SHEET NUMBER: REVISION:

**3**

**3 OF 4**





SCALE: MEYERS ELECTRIC CABINET  
N.T.S.

**MYERS** POWER PRODUCTS, INC.  
725 E. HARRISON CORONA, CA 92879

CAT. NO. MEUG20-100 (MOD)  
SEE DRAWING 5101443 FOR WIRING DIAGRAM  
120/240 V 1 φ 3 W 100 AMPS  
UTILITY DWP 10K AIC

DISTRIBUTOR NEXT G NETWORKS  
CONTRACTOR

FINISH COLOR:  LT. GREEN  WHITE  DK. GREEN  
 OTHER

STATE INSPECTION REQUIRED  YES  NO

UL LABEL  INDUSTRIAL CONTROL  
 CABINET & BOXES

NAMEPLATES  BREAKER I.D.  
PHENDLIC  CONTRACT NO.  
 LOCATION  
 POWER POLE NO.

PHOTOCELL REQUIRED  YES  NO PHOTOCELL PROVISIONS  YES  NO

**MYERS METERED UNDERGROUND SERVICE PEDESTAL**  
NEMA 3R CONSTRUCTION-12GA GALVANEALD STEEL W/POWDER COAT FINISH. -STAINLESS STEEL HARDWARE  
USE CLIP-IN BREAKERS-CUTLE-HAMMER QC OR GE THQC.  
ALL FACTORY WIRING CODE GAUGE COPPER CONDUCTORS WITH 600V INSULATION  
SERVICE TERMINATIONS NO. 6 AWG TO 250 MCM CU/AL

NO	DESCRIPTION	QTY	AMP	POLE	KVIC	MANUFACTURER	MYERS P/N
	CIRCUIT BREAKER	3			10K	CH TYPE QC	
	POWER BLOCK	1	100	2		MARATHON	052001
	DUPEX RECEPT.	1	20	3W		BRYANT	052003

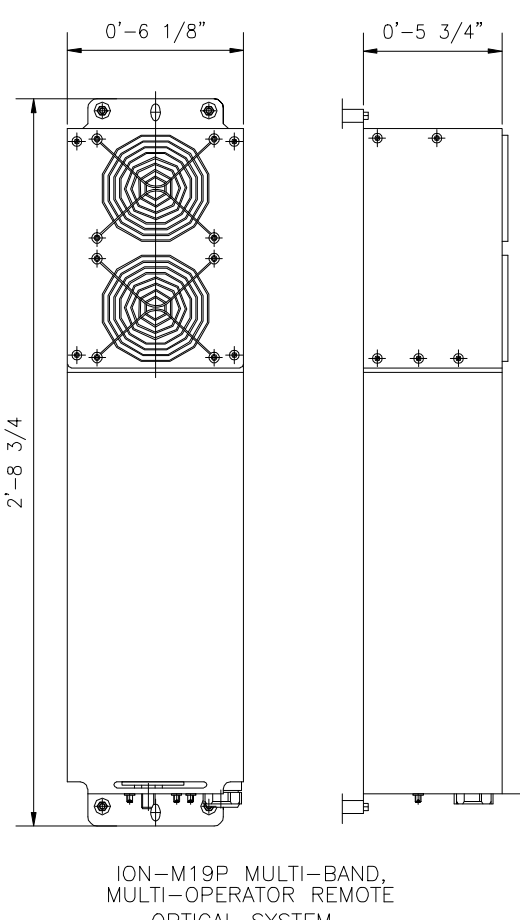
DATE: BY: JLT S/D #

A

ION-M19P IS A MULTI-BAND MULTI-OPERATOR REMOTE UNIT WITH VARIOUS EXTENSION UNITS. IT IS USED IN CONJUNCTION WITH A MASTER UNIT IN THE ION OPTICAL DISTRIBUTION SYSTEM. THIS SYSTEM TRANSPORTS MULTIPLE FREQUENCY BANDS SIMULTANEOUSLY (1900 MHZ AND 1700/2100 MHZ), PROVIDING A COST-EFFECTIVE SOLUTION FOR DISTRIBUTING CAPACITY FROM ONE OR MORE BASE STATIONS.

ELECTRICAL POWER SUPPLY MAINS POWER, VAC	85 TO 264 115 OR 230	POWER CONSUMPTION, WATTS	350	OPTICAL CONNECTORS	E2000/APC 8"	OPTICAL RETURN LOSS, DB	45 MINIMUM	FIBER TYPE, MM	SINGLE MODE E9/125	OPTICAL LINK BUDGET, DB	0 TO 10	COMPOSITE INPUT POWER @ OTRX MASTER SIDE, DBM	1900MHZ +3 COMPOSITE 1700/2100 MHZ +5 COMPOSITE	INTERFACE	1900MHZ 4 1700/2100 MHZ 4	SYSTEM OPTIMIZED FOR BTS POWER, DBM	33	ANTENNA PORT CONNECTOR	N FEMALE	OUTPUT POWER	SEE BAND SPECIFICATION	FREQUENCY RANGE, MHZ	1850 TO 1915 1930 TO 1995	DOWNLINK OUTPUT POWER PER CARRIER*, DBM	NUMBER OF CARRIERS	1 2 4 8	CSM	43 40 37 34	TOMA / EDGE	43 40 37 34	CDMA/EV-DO	43 40 37 34	WCDMA/HSDPA	43 40 37 34	SPIRIOUS EMISSION	<-13 DBM / 1MHZ	DL OUTPUT TOLERANCE OVER FREQUENCY, DB	+1	DL OUTPUT TOLERANCE OVER TEMPERATURE, DB	+0.5
--	----------------------	--------------------------	-----	--------------------	--------------	-------------------------	------------	----------------	--------------------	-------------------------	---------	---	--	-----------	------------------------------	-------------------------------------	----	------------------------	----------	--------------	------------------------	----------------------	---------------------------	---	--------------------	---------	-----	-------------	-------------	-------------	------------	-------------	-------------	-------------	-------------------	-----------------	--	----	--	------

INPUT ICP ICP3 OPTIMIZED -12  
NOISE FIGURE OPTIMIZED -18  
NOISE FIGURE, DB  
ICP3 OPTIMIZED 11  
NOISE FIGURE OPTIMIZED 6  
1700/2100 MHZ (IN EXTENSION UNIT)  
FREQUENCY RANGE, MHZ  
UPLINK 1710 TO 1755  
DOWNLINK 2110 TO 2155  
OUTPUT POWER PER CARRIER\*, DBM  
CDMA/EV-DO WCDMA/UMTS/HSDPA  
+43 +43 @ 1 CARRIER  
+40 +40 @ 2 CARRIERS  
+37 +37 @ 4 CARRIERS  
+34 +34 @ 8 CARRIERS  
SPIRIOUS EMISSION <-13 DBM / 1 MHZ  
ADJACENT CHANNEL POWER, DBC  
DL OUTPUT TOLERANCE OVER FREQ., DB +1  
DL OUTPUT TOLERANCE OVER TEMP, DB +0.5  
INPUT ICP3, DBM  
ICP3 OPTIMIZED -12  
NOISE FIGURE OPTIMIZED -18  
\* APPLICABLE TO SINGLE MODULATION MODE ONLY  
\*\* WITH ACTIVE COOLING



SCALE: REPEATER EQUIPMENT DIMENSIONS  
N.T.S.

B



PROJECT INFORMATION:

**MPC1035CA-GOLN002**  
**GOLETA**  
**GOLETA, CA 93117**

CURRENT ISSUE DATE:

**3/24/2010**

PERMIT SUBMISSION:

REV: DATE: DESCRIPTION: BY:

PLANS PREPARED BY:

**HP COMMUNICATIONS INC.**

13341 Temescal Cyn. Rd.  
Corona, CA 92883  
PHONE: (951) 471-1919

PLANS APPROVED BY:



REP:

COMMENTS:

SHEET TITLE:

**TYPICALS PAGE**

SHEET NUMBER: REVISION:

**4**

**4 OF 4**



**840 10500**  
**Dualband X-pol Omni Antenna**



DUALBAND X-POL OMNI ANTENNA  
840 10500

GENERAL SPECIFICATIONS:

FREQUENCY RANGE: 806-960 MHz  
1710-2170 MHz

GAIN: 806-960 MHz 6 dB (WITH 3-5 dB NULLS, TYPICAL)  
1710-2170 MHz 8 dB (WITH 6-8 dB NULLS, TYPICAL)

VSWR: <1.5:1

IMPEDANCE: 50 OHMS

INTERMODULATION (2x20w) IM3: <-150 dBc

POLARIZATION: +45° UPPER AND LOWER BAND  
-45° UPPER AND LOWER BAND

CONNECTOR: 2 x 7/16 DIN FEMALE

ISOLATION: INTRASYSTEM >30 dB  
INTERSYSTEM >40 dB (806-960/1710-2170 MHz)

MAXIMUM INPUT POWER: 806-960 MHz 250 WATTS (AT 50°C)  
1710-2170 MHz 200 WATTS (AT 50°C)

RADOME COLOR: LIGHT GRAY (CUSTOM COLORS AVAILABLE AT ADDITIONAL COST)

WEIGHT: 45 LB. (20.4 kg)

HEIGHT: 24.2 INCHES. (615 mm)

RADOME DIAMETER: 18.3 INCHES (465 mm)

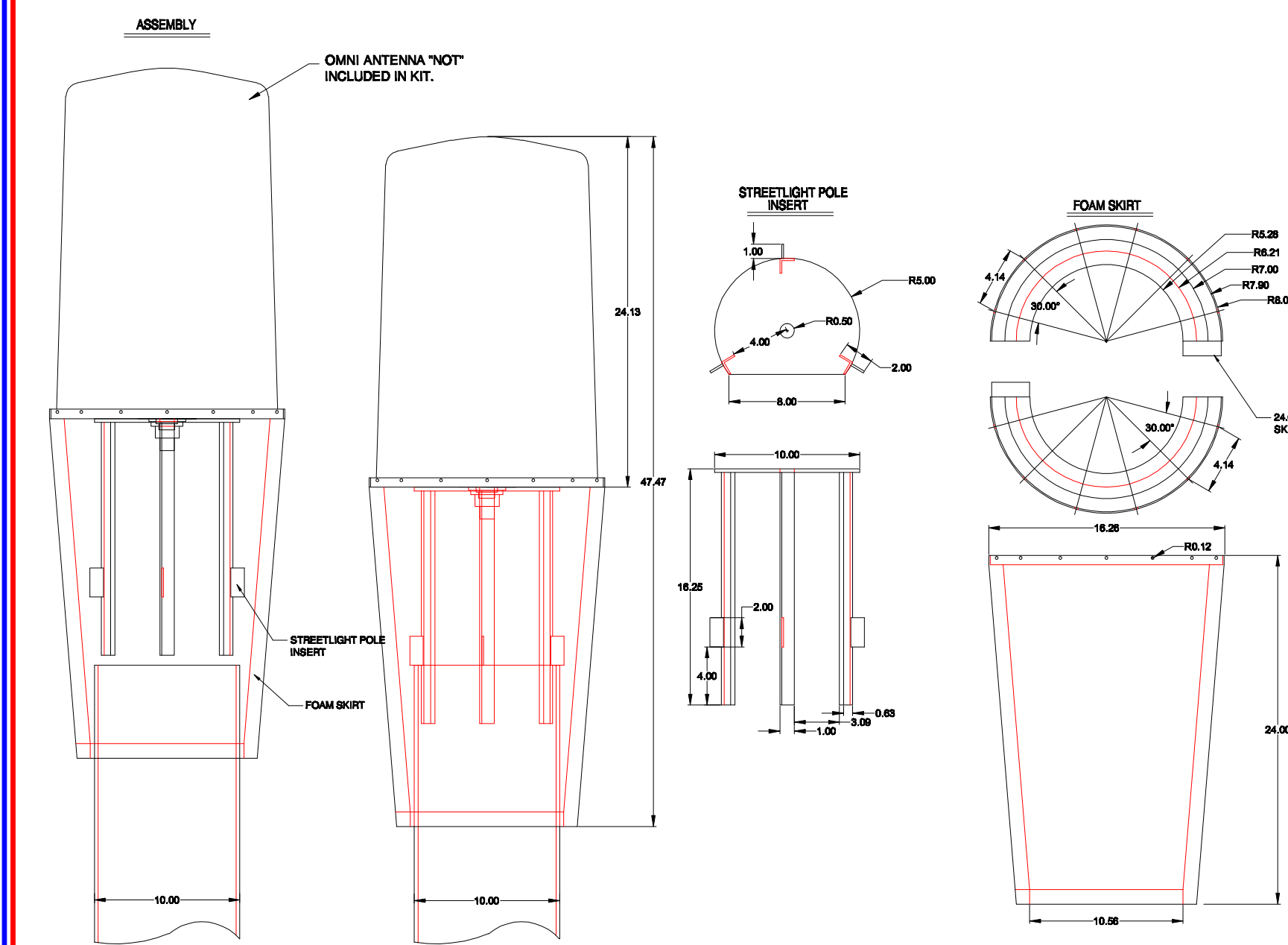
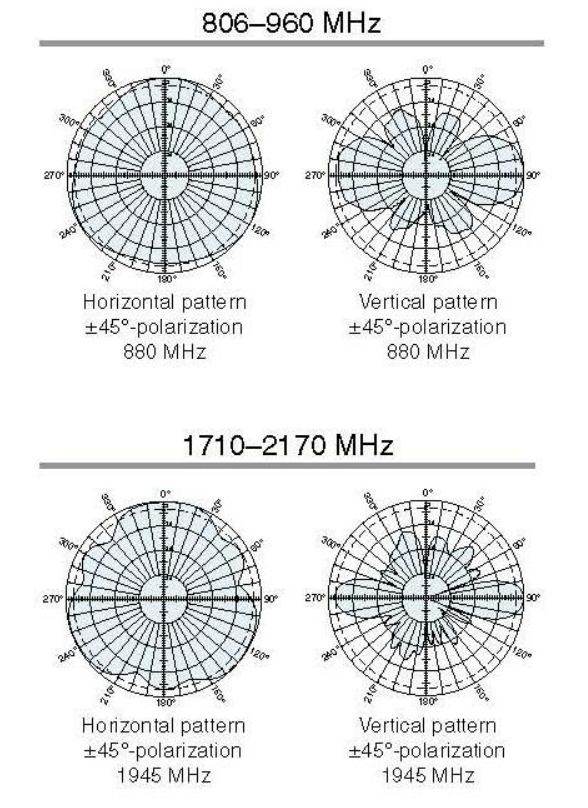
EQUIVALENT FLAT PLATE AREA: 1.6 FT<sup>2</sup> (0.148 m<sup>2</sup>)

WIND SURVIVAL RATING: 100 mph (160 kph)

SHIPPING DIMENSIONS: 32 x 20 x 19 INCHES (813 x 508 x 483 mm)

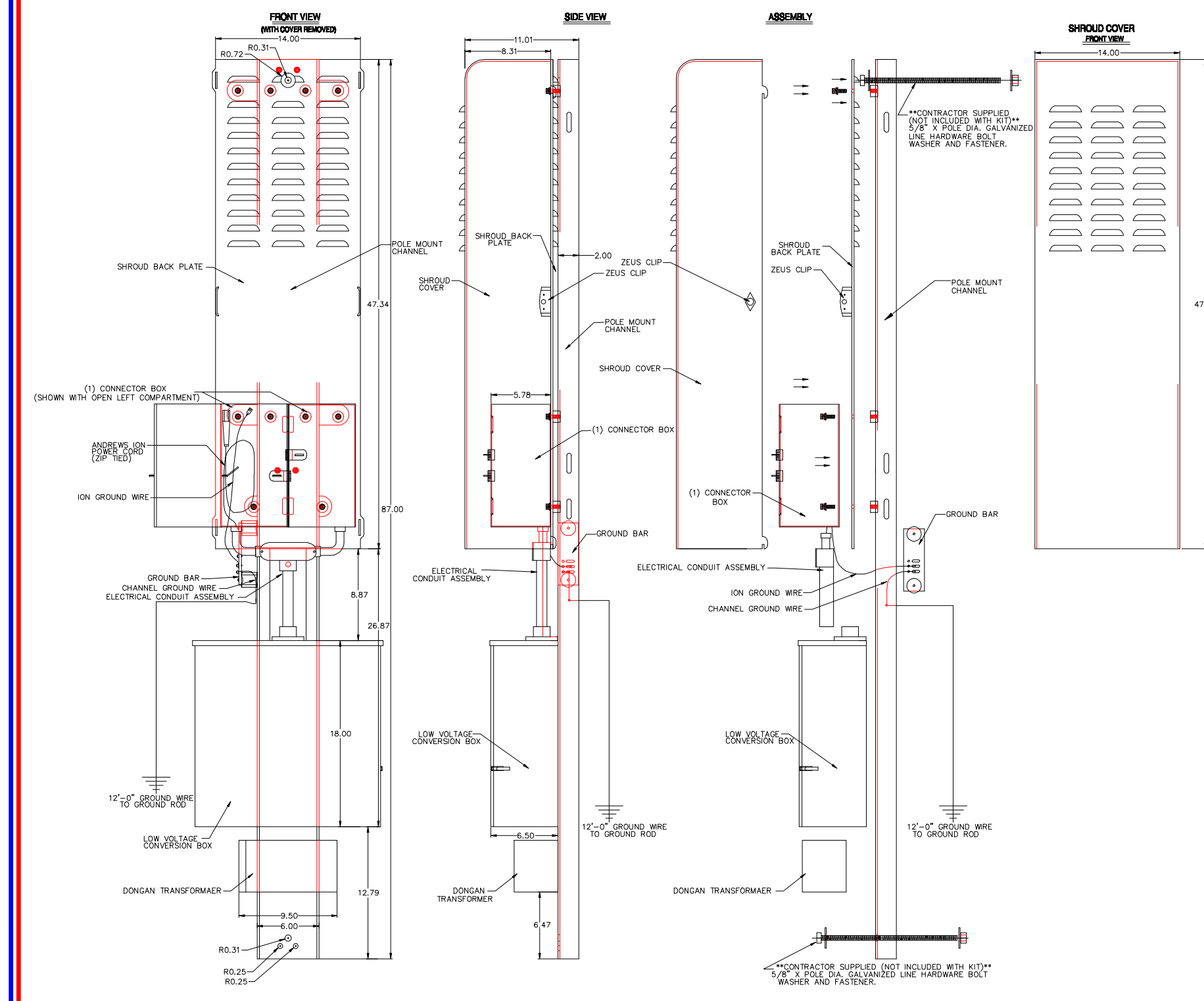
SHIPPING WEIGHT: 52 lbs. (23.6 kg)

Mounting: DESIGNED TO BE MOUNTED ON TOP OF A UTILITY POLE USING A CUSTOM MOUNTING BRACKET SUPPLIED BY THE CUSTOMER.



SCALE: ANTENNA INSTALLATION KIT  
N.T.S.

D



SCALE: SHROUD SPECIFICATIONS (SH001)  
N.T.S.

E