

NextG Networks of California, Inc.

MPC1035CA-GOLN011M1

GOLETA

GOLETA, CA 93117



NextG Networks of California, Inc.
5720 THORNWOOD DR.
GOLETA, CA 93117
PHONE: (408) 954-1580

PROJECT INFORMATION:

MPC1035CA-GOLN011M1
GOLETA
GOLETA, CA 93117

CURRENT ISSUE DATE:

03/19/2010

PERMIT SUBMISSION:

REV.: DATE: DESCRIPTION: BY:

PLANS PREPARED BY:

HP COMMUNICATIONS INC.

5720 THORNWOOD DR.
GOLETA, CA 93117
PHONE: (951) 471-1919

PLANS APPROVED BY:

NextG Networks of California, Inc.

REP:

COMMENTS:

SHEET TITLE:

TITLE SHEET

SHEET NUMBER: REVISION:

1

1 OF 4

ALL WORK AND MATERIALS SHALL BE PERFORMED AND INSTALLED IN ACCORDANCE WITH THE CURRENT EDITIONS OF THE FOLLOWING CODES AS ADOPTED BY THE LOCAL GOVERNING AUTHORITIES. NOTHING IN THESE PLANS IS TO BE CONSTRUED TO PERMIT WORK NOT CONFORMING TO THE AREAS GOVERNING CODES.

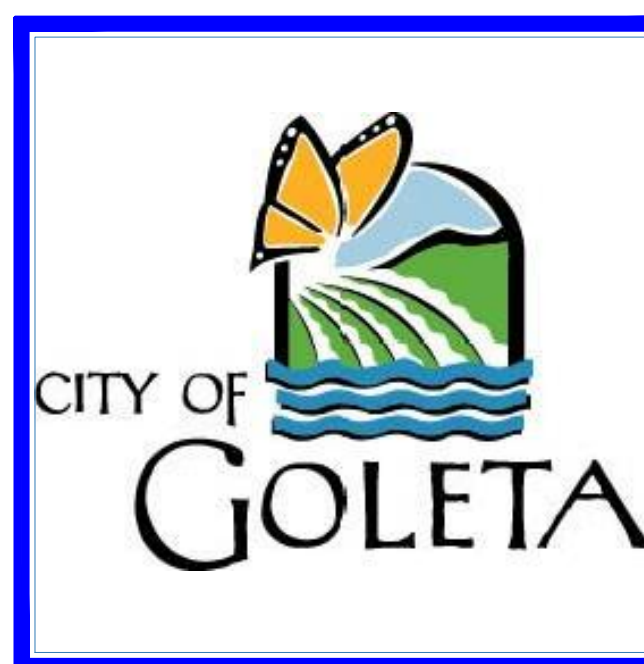
- | | |
|--|---------------------------|
| 1. STATE ADMINISTRATIVE CODE | 5. STATE PLUMBING CODE |
| 2. STATE BUILDING CODE | 6. STATE ELECTRIC CODE |
| 3. ANSI/EIA-222-F LIFE SAFETY CODE NFPA-101-1990 | 7. LOCAL BUILDING CODE |
| 4. STATE MECHANICAL CODE | 8. CITY/COUNTY ORDINANCES |

CODE COMPLIANCE

PROPERTY INFORMATION

CUSTOMER: NEXTG NETWORKS OF CALIFORNIA, INC.
 PROJECT: EAST SANTA BARBARA
 NODE: MPC1035CA-GOLN011M1
 LATITUDE: 34.43507
 LONGITUDE: -119.80950
 STREET ADDRESS: 5300 HOLLISTER
 CITY, STATE: SANTA BARBARA, CA 93111
 JURISDICTION: CITY OF GOLETA
 POLE # : 1522857E
 POLE TYPE: WOOD UTILITY POLE
 RAD CENTER / ANTENNA HEIGHT: 34'-0"
 ANTENNA TYPE: AWS360-1710-7-T0-N
 AZIMUTH FOR ANTENNA: N/A
 POWER TO POLE: SECONDARY
 POLE ACCESS: ON ROAD
 POLE OWNER: N/A
 POLE LOCATION & DESCRIPTION: N/A

PROJECT SUMMARY



THE PROJECT CONSISTS OF THE INSTALLATION AND OPERATION OF ANTENNAS AND ASSOCIATED EQUIPMENT CABINETS FOR NEXTG. THE INSTALLATION OF GROUND MOUNTED EQUIPMENT CABINETS, ANTENNAS ON AN EXISTING STREET LIGHT, WOOD POLE, TRAFFIC SIGNAL AND NEW STEEL POLES.

PROJECT DESCRIPTION

INSTALL / PLACE NEW FIBER TO NEW OR EXISTING POLE. INSTALL EITHER OMNI OR PANEL ANTENNAS AND ALL ASSOCIATED BRACKETS IN ACCORDANCE TO CONSTRUCTION SPECIFICATIONS. REARRANGE ANY EXISTING FACILITIES IN ACCORDANCE TO GOVERNING CONSTRUCTION GUIDELINES.

PROJECT SCOPE

SHEET	DESCRIPTION	REV.
1	TITLE SHEET	2
2	UTILITY NODE / REPEATER POLE EQUIPMENT PROFILES	2
3	MAPS	2
4	TYPICALS	2

SHEET INDEX

DO NOT SCALE DRAWINGS

CONTRACTOR SHALL VERIFY ALL PLANS AND EXISTING DIMENSIONS AND CONDITIONS ON THE JOB SITE AND SHALL IMMEDIATELY NOTIFY THE ARCHITECT IN WRITING OF ANY DISCREPANCIES BEFORE PROCEEDING WITH THE WORK OR BE RESPONSIBLE FOR SAME.

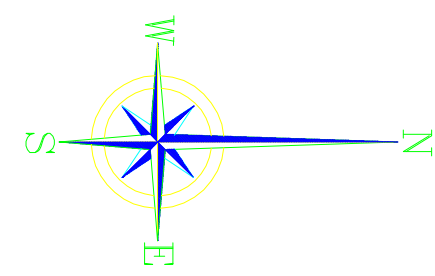
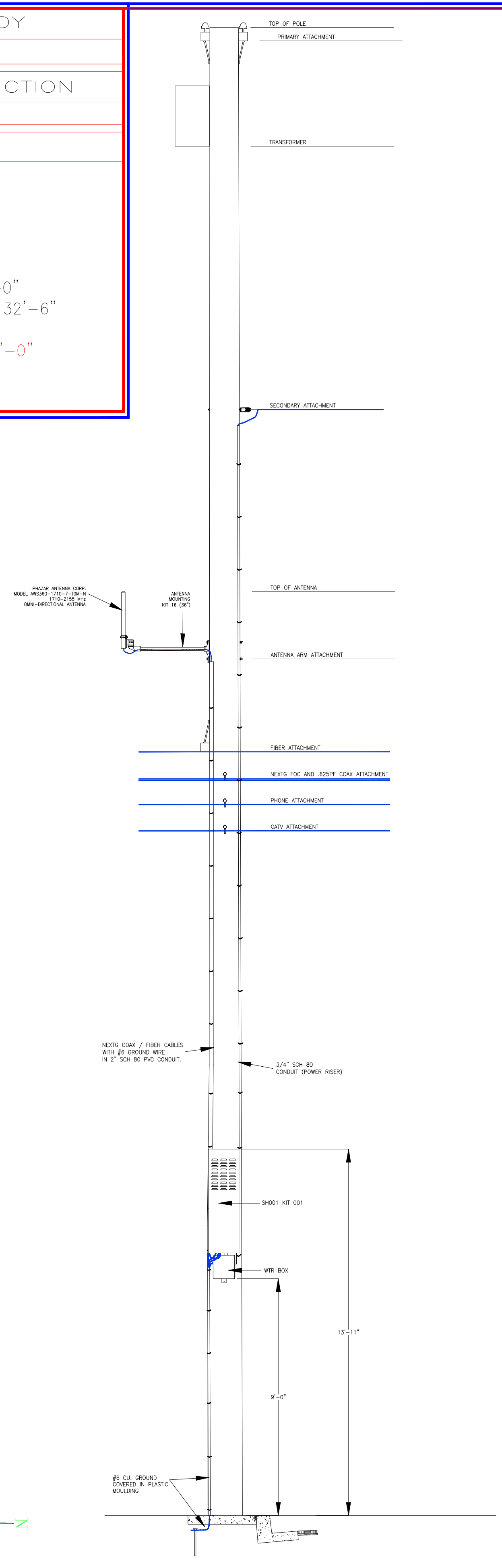
GENERAL CONTRACTOR NOTES

MAKE READY

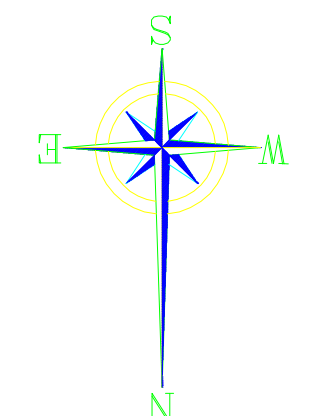
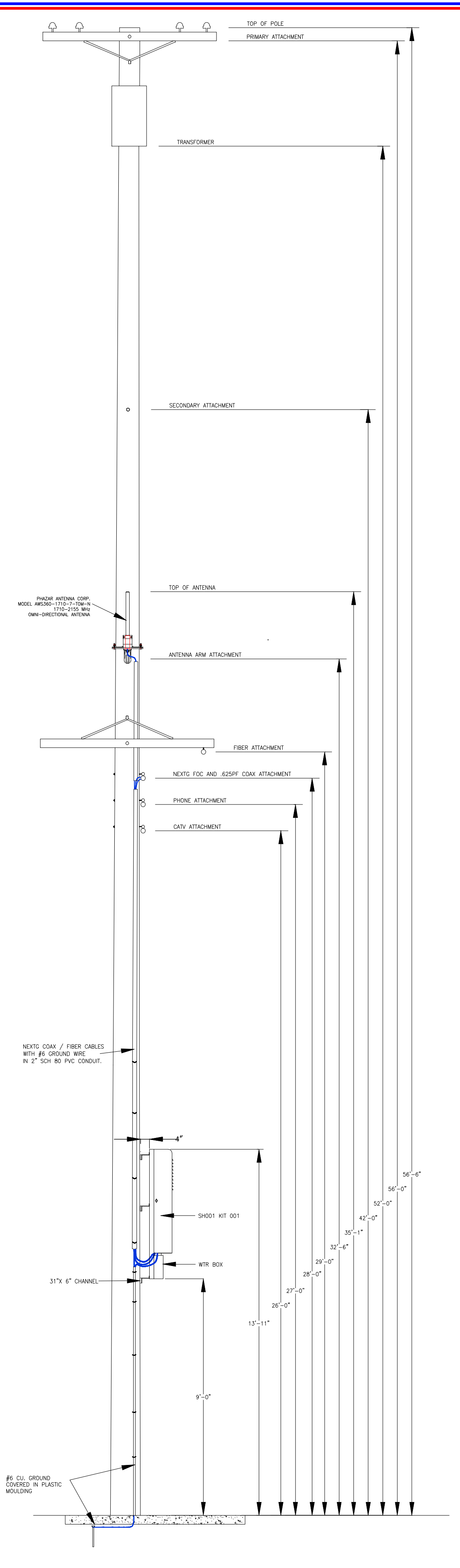
NEW CONSTRUCTION

NOTES:

- TOP OF POLE: 56'-6"
- PRIMARY H.O.A: 56'-0"
- TRANSFORMER H.O.A: 52'-0"
- SECONDARY H.O.A: 42'-0"
- TOP OF ANTENNA: 35'-1"
- ANTENNA CENTER RAD: 34'-0"
- ANTENNA ARM ATTACHMENT: 32'-6"
- FIBER H.O.A: 29'-0"
- PROPOSED NEXTG H.O.A: 28'-0"
- PHONE H.O.A: 27'-0"
- CATV H.O.A: 26'-0"



SCALE: N.T.S. WOOD UTILITY POLE DETAIL ID #1522857E LOOKING WEST A

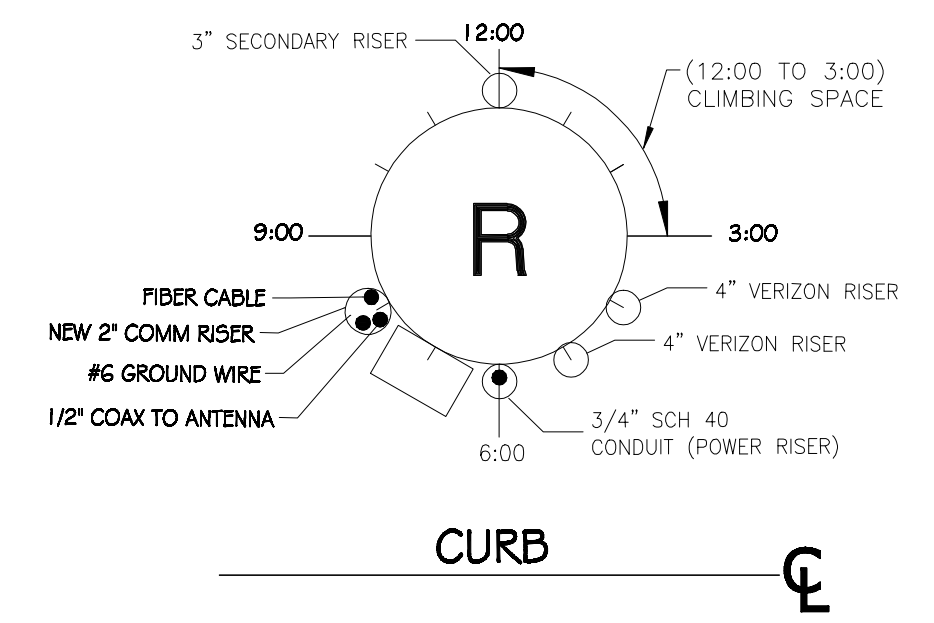


SCALE: N.T.S. WOOD UTILITY POLE DETAIL ID #1522857E LOOKING SOUTH B



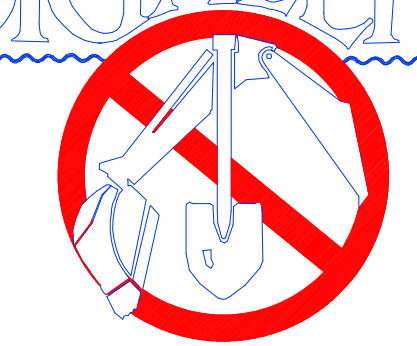
SCALE: N.T.S. SITE POLE PICTURE C

POLE WILL BE STEPPED IN ACCORDANCE TO G095 STANDARDS IN RESPECT TO CLIMBING SPACE.
 1-2" NEXTG RISER @ 8:00
 1-3/4" POWER RISER @ 6:00



SCALE: N.T.S. RISER POLE DETAIL D

DIGALERT



1-800-227-2600

CALL AT LEAST TWO DAYS BEFORE YOU DIG

UNDERGROUND SERVICE ALERT OF NORTHERN CALIFORNIA

TICKET # _____



PROJECT INFORMATION:

MPC1035CA-GOLN011M1
 GOLETA
 GOLETA, CA 93117

CURRENT ISSUE DATE:

03/19/2010

PERMIT SUBMISSION:

REV: DATE: DESCRIPTION: BY:

REV:	DATE:	DESCRIPTION:	BY:

PLANS PREPARED BY:

HP COMMUNICATIONS INC.

5720 THORNWOOD DR.
 GOLETA, CA 93117
 PHONE: (951) 471-1919

PLANS APPROVED BY:



REP:

COMMENTS:

SHEET TITLE:

PROFILES

SHEET NUMBER: REVISION:

2 2 OF 4

PROJECT INFORMATION:

MPC1035CA-GOLN011M1
GOLETA
GOLETA, CA 93117

CURRENT ISSUE DATE:

03/19/2010

PERMIT SUBMISSION:

REV.: DATE: DESCRIPTION: BY:

REV.	DATE	DESCRIPTION	BY

PLANS PREPARED BY:

HP COMMUNICATIONS INC.

5720 THORNWOOD DRIVE
 GOLETA, CA 93117
 PHONE: (951) 471-1919

PLANS APPROVED BY:

REP:

COMMENTS:

SHEET TITLE:

MAP

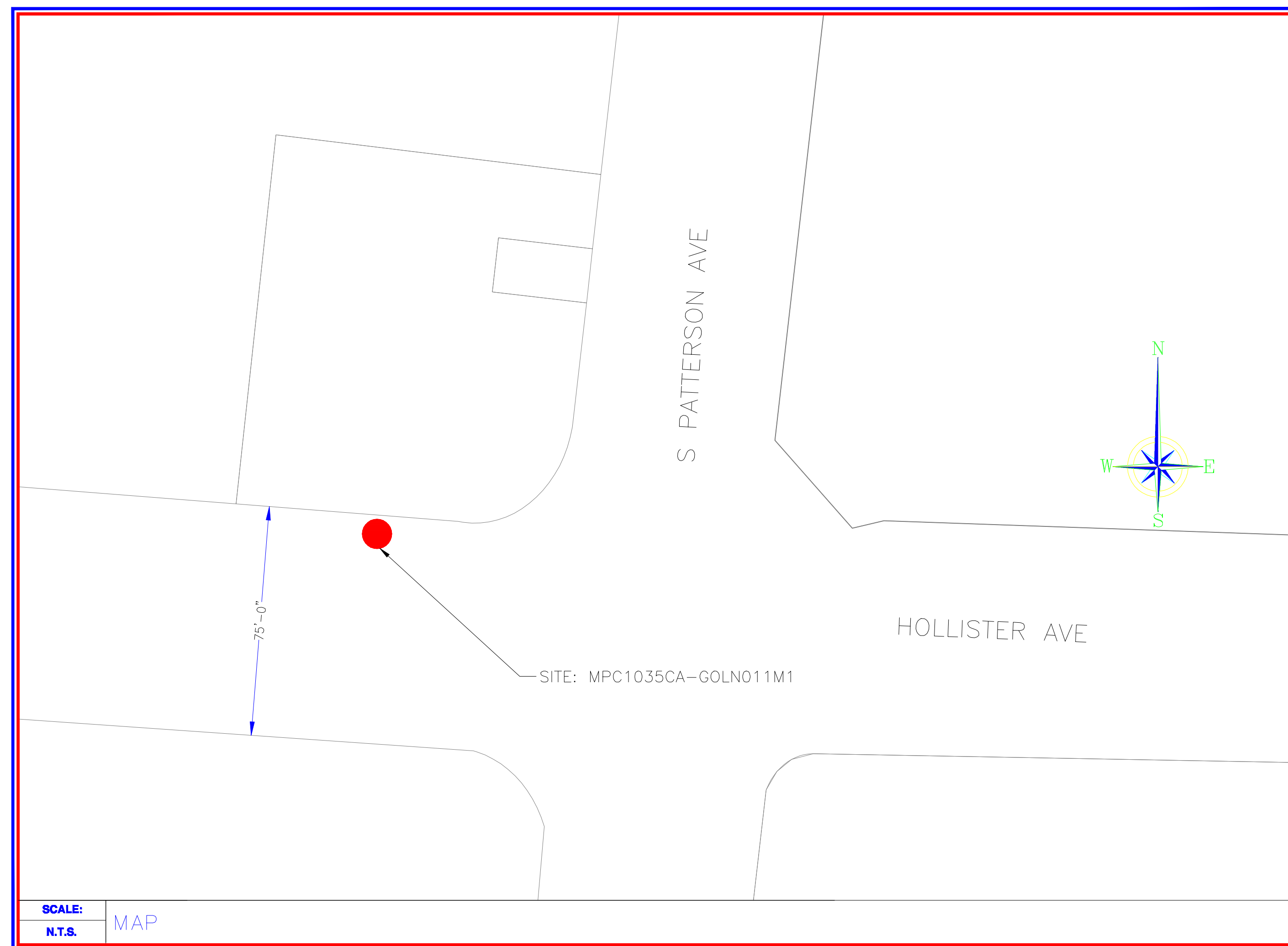
SHEET NUMBER: REVISION:

3

3 OF 4



SCALE:
 N.T.S. MAP



SCALE:
 N.T.S. MAP

ION-M19P
 ANDREW ION-19P IS A MULTI-BAND MULTI-OPERATOR REMOTE UNIT WITH VARIOUS EXTENSION UNITS. IT IS USED IN CONJUNCTION WITH A MASTER UNIT IN THE ION OPTICAL DISTRIBUTION SYSTEM. THIS SYSTEM TRANSPORTS MULTIPLE FREQUENCY BANDS SIMULTANEOUSLY (1900 MHZ AND 1700/2100 MHZ), PROVIDING A COST-EFFECTIVE SOLUTION FOR DISTRIBUTING CAPACITY FROM ONE OR MORE BASE STATIONS.

ELECTRICAL
 POWER SUPPLY 85 TO 264
 MAINS POWER, VAC 115 OR 230
 POWER CONSUMPTION, WATTS 350
 OPTICAL CONNECTORS E2000/APC 8'
 OPTICAL RETURN LOSS, DB 45 MINIMUM
 FIBER TYPE, MM SINGLE MODE E9/125
 OPTICAL LINK BUDGET, DB 0 TO 10
 COMPOSITE INPUT POWER @ OTRX MASTER SIDE, DBM
 1700/2100 MHZ +3 COMPOSITE
 1900MHZ +5 COMPOSITE
 INTERFACE 1700/2100 MHZ
 BITS SIDE 4
 NUMBER OF CONNECTORS 4
 1900MHZ 33
 1700/2100 MHZ 4
 SYSTEM OPTIMIZED FOR BTS POWER, DBM 43

ANTENNA PORT
 CONNECTOR N FEMALE
 OUTPUT POWER SEE BAND SPECIFICATION
 1900 MHZ
 FREQUENCY RANGE, MHZ 1850 TO 1915
 UPLINK 1930 TO 1995
 DOWNLINK
 OUTPUT POWER PER CARRIER*, DBM
 NUMBER OF CARRIERS 1 2 4 8
 GSM 43 40 37 34
 TDM/EDGE 43 40 37 34
 CDMA/EV-DO 43 40 37 34
 WCDMA/HSDPA 43 40 37 34
 SPURIOUS EMISSION <-13 DBM / 1MHZ
 DL OUTPUT TOLERANCE OVER FREQUENCY, DB +1
 DL OUTPUT TOLERANCE OVER TEMPERATURE, DB +0.5

INPUT ICP
 ICP3 OPTIMIZED -12
 NOISE FIGURE OPTIMIZED -18
 NOISE FIGURE, DB
 ICP3 OPTIMIZED 11
 NOISE FIGURE OPTIMIZED 6
 1700/2100 MHZ (IN EXTENSION UNIT)
 FREQUENCY RANGE, MHZ 1710 TO 1755
 UPLINK 2110 TO 2155
 DOWNLINK
 OUTPUT POWER PER CARRIER*, DBM
 CDMA/EV-DO WCDMA/UMTS/HSDPA
 +43 +43 @ 1 CARRIER
 +40 +40 @ 2 CARRIERS
 +37 +37 @ 4 CARRIERS
 +34 +34 @ 8 CARRIERS
 SPURIOUS EMISSION <-13 DBM / 1 MHZ
 ADJACENT CHANNEL POWER, DBM -48
 DL OUTPUT TOLERANCE OVER FREQ., DB +1
 DL OUTPUT TOLERANCE OVER TEMP., DB +0.5
 INPUT ICP3, DBM
 ICP3 OPTIMIZED -12
 NOISE FIGURE OPTIMIZED -18
 * APPLICABLE TO SINGLE MODULATION MODE ONLY
 ** WITH ACTIVE COOLING

ION-M19P MULTI-BAND, MULTI-OPERATOR REMOTE OPTICAL SYSTEM

SCALE: REPEATER EQUIPMENT DIMENSIONS
N.T.S.

SCALE: SHROUD SPECIFICATIONS (SH001)
N.T.S.

Phazar Antenna Corp.

1710-2155 MHz OMNI-DIRECTIONAL ANTENNA
 -RUGGED, FIBERGLASS RADOME
 -FREQUENCY COVERAGE FOR ENTIRE AWS BAND

MODEL AWS360-1710-7-T0-N

ELECTRICAL SPECIFICATIONS:

FREQUENCY RANGE	1710-2155 MHz
VSWR	1.7:1 VSWR MAX
FORWARD GAIN	7 dBi
POLARIZATION	VERTICAL
MAXIMUM POWER INPUT	200 WATTS
INPUT IMPEDANCE	50 OHMS
VERTICAL-3dB BEAMWIDTH	16±1' (NOMINAL)
HORIZONTAL-3dB BEAMWIDTH	360°
AZIMUTH RIPPLE	±5 dB
ELECTRICAL DOWNTILT	2 AND 4' (T2 AND T4 FOR PART NUMBER)

MECHANICAL & ENVIRONMENTAL SPECIFICATIONS:

CONNECTOR	TYPE 'N' MALE OR 716 DIN
MOUNTING	SIDE MOUNT, CLAMPS PROVIDED
DIMENSION AND WEIGHT	26 INCHES X 2.0 INCH O.D./<10 lbs.
COLOR	WHITE STANDARD (COLOR OPTIONS AVAILABLE)
WIND SURVIVAL	120 MPH
LIGHTNING PROTECTION	DIRECT GROUND

SCALE: ANTENNA SPECIFICATIONS
N.T.S.

NextG Networks of California, Inc.
 5720 THORNWOOD DR.
 GOLETA, CA 93117
 PHONE: (408) 954-1580

PROJECT INFORMATION:

MPC1035CA-GOLN011M1
GOLETA
GOLETA, CA 93117

CURRENT ISSUE DATE:

03/19/2010

PERMIT SUBMISSION:

REV.:	DATE:	DESCRIPTION:	BY:

PLANS PREPARED BY:

HP COMMUNICATIONS INC.
 5720 THORNWOOD DRIVE
 GOLETA, CA 93117
 PHONE: (951) 471-1919

PLANS APPROVED BY:

NextG Networks of California, Inc.
 REP:

COMMENTS:

SHEET TITLE:

TYPICALS PAGE

SHEET NUMBER: REVISION:

4 **4 OF 4**

NEXTG COAX / FIBER CABLES WITH #6 GROUND WIRE IN 2" SCH 80 PVC CONDUIT.

NEXTG EQUIPMENT MOUNTING PLATFORM (SH001) 124 LBS WITH RADIOS.

WTR BOX

9'-0" MINIMUM TO GROUNDED EQUIPMENT

10'-0"

#6 CU. GROUND COVERED IN PLASTIC MOULDING

SCALE: REPEATER EQUIPMENT AMD MOUNTING CHASIS CONFIGURATION
N.T.S.

ANTENNA MOUNTING KIT 16

SCALE: ANTENNA MOUNTING KIT 16
N.T.S.