

NextG Networks of California, Inc.

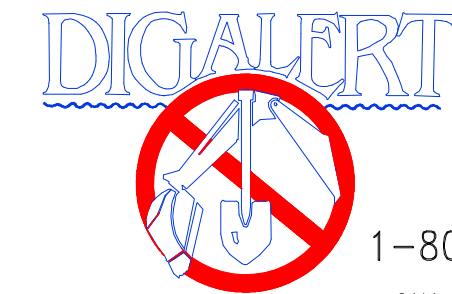
MPC1035CA-GOLN012

GOLETA

GOLETA, CA 93117



VICINITY MAP



UNDERGROUND SERVICE ALERT OF NORTHERN CALIFORNIA

1-800-227-2600
CALL AT LEAST TWO DAYS BEFORE YOU DIG

TICKET # _____

NextG Networks of California, Inc.
5720 THORNWOOD DR.
GOLETA, CA 93117
PHONE: (408) 954-1580

PROJECT INFORMATION:

MPC1035CA-GOLN012
GOLETA
GOLETA, CA 93117

CURRENT ISSUE DATE:

04/15/2010

PERMIT SUBMISSION:

REV.: DATE: DESCRIPTION: BY:

PLANS PREPARED BY:

HP COMMUNICATIONS INC.

5720 THORNWOOD DR.
GOLETA, CA 93117
PHONE: (951) 471-1919

PLANS APPROVED BY:

NextG Networks of California, Inc.

REP:

COMMENTS:

SHEET TITLE:

TITLE SHEET

SHEET NUMBER: REVISION:

1

1 OF 5

ALL WORK AND MATERIALS SHALL BE PERFORMED AND INSTALLED IN ACCORDANCE WITH THE CURRENT EDITIONS OF THE FOLLOWING CODES AS ADOPTED BY THE LOCAL GOVERNING AUTHORITIES. NOTHING IN THESE PLANS IS TO BE CONSTRUED TO PERMIT WORK NOT CONFORMING TO THE AREAS GOVERNING CODES.

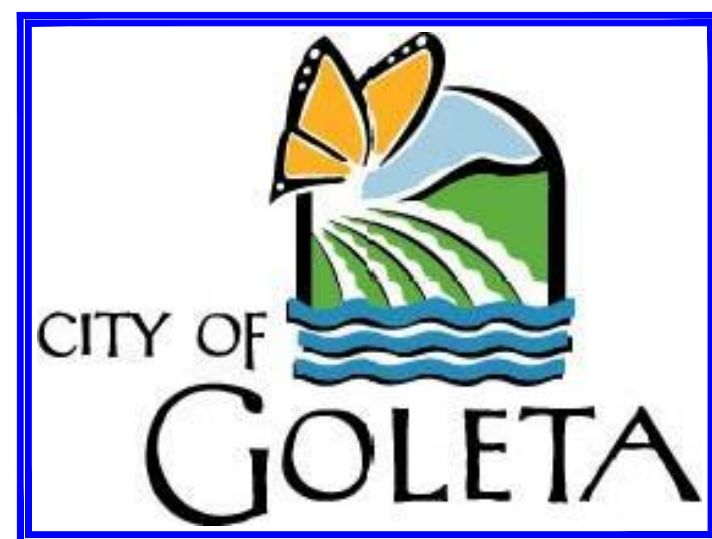
1. STATE ADMINISTRATIVE CODE	5. STATE PLUMBING CODE
2. STATE BUILDING CODE	6. STATE ELECTRIC CODE
3. ANSI/EIA-222-F LIFE SAFETY CODE NFPA-101-1990	7. LOCAL BUILDING CODE
4. STATE MECHANICAL CODE	8. CITY/COUNTY ORDINANCES

CODE COMPLIANCE

PROPERTY INFORMATION

CUSTOMER: NEXTG NETWORKS OF CALIFORNIA, INC.
PROJECT: GOLETA
NODE: MPC1035CA-GOLN012
LATITUDE: 34.446
LONGITUDE: -119.8551
STREET ADDRESS: 6556 CATHEDRAL OAKS RD.
CITY, STATE: GOLETA, CA 93117
JURISDICTION: CITY OF GOLETA
POLE #: N/A
POLE TYPE: CONCRETE STREET LIGHT POLE
RAD CENTER / ANTENNA HEIGHT: 26'-3"
ANTENNA TYPE: AWS360-1710-7-T0-N
AZIMUTH FOR ANTENNA: N/A
POWER TO POLE: SECONDARY
POLE ACCESS: ON ROAD
POLE OWNER: N/A
POLE LOCATION & DESCRIPTION: SE CORNER OF LOS CARNEROS RD./ CATHEDRAL OAKS RD.

PROJECT SUMMARY



THE PROJECT CONSISTS OF THE INSTALLATION AND OPERATION OF ANTENNAS AND ASSOCIATED EQUIPMENT CABINETS FOR NEXTG. THE INSTALLATION OF GROUND MOUNTED EQUIPMENT CABINETS, ANTENNAS ON AN EXISTING STREET LIGHT, WOOD POLE, TRAFFIC SIGNAL AND NEW STEEL POLES.

PROJECT DESCRIPTION

INSTALL / PLACE NEW FIBER TO NEW OR EXISTING POLE. INSTALL EITHER OMNI OR PANEL ANTENNAS AND ALL ASSOCIATED BRACKETS IN ACCORDANCE TO CONSTRUCTION SPECIFICATIONS. REARRANGE ANY EXISTING FACILITIES IN ACCORDANCE TO GOVERNING CONSTRUCTION GUIDELINES.

PROJECT SCOPE

SHEET	DESCRIPTION	REV.
1	TITLE SHEET	2
2	UTILITY NODE / REPEATER POLE EQUIPMENT PROFILES	2
3	MAPS	2
4	TYPICALS	2
5	TYPICALS	2

SHEET INDEX

DO NOT SCALE DRAWINGS

CONTRACTOR SHALL VERIFY ALL PLANS AND EXISTING DIMENSIONS AND CONDITIONS ON THE JOB SITE AND SHALL IMMEDIATELY NOTIFY THE ARCHITECT IN WRITING OF ANY DISCREPANCIES BEFORE PROCEEDING WITH THE WORK OR BE RESPONSIBLE FOR SAME.

GENERAL CONTRACTOR NOTES

PROJECT INFORMATION:

MPC1035CA-GOLN012
GOLETA
GOLETA, CA 93117

CURRENT ISSUE DATE:

04/15/2010

PERMIT SUBMISSION:

REV. DATE DESCRIPTION BY

PLANS PREPARED BY:

HP COMMUNICATIONS INC.

5720 THORNWOOD DR.
 GOLETA, CA 93117
 PHONE: (951) 471-1919

PLANS APPROVED BY:

REP:

COMMENTS:

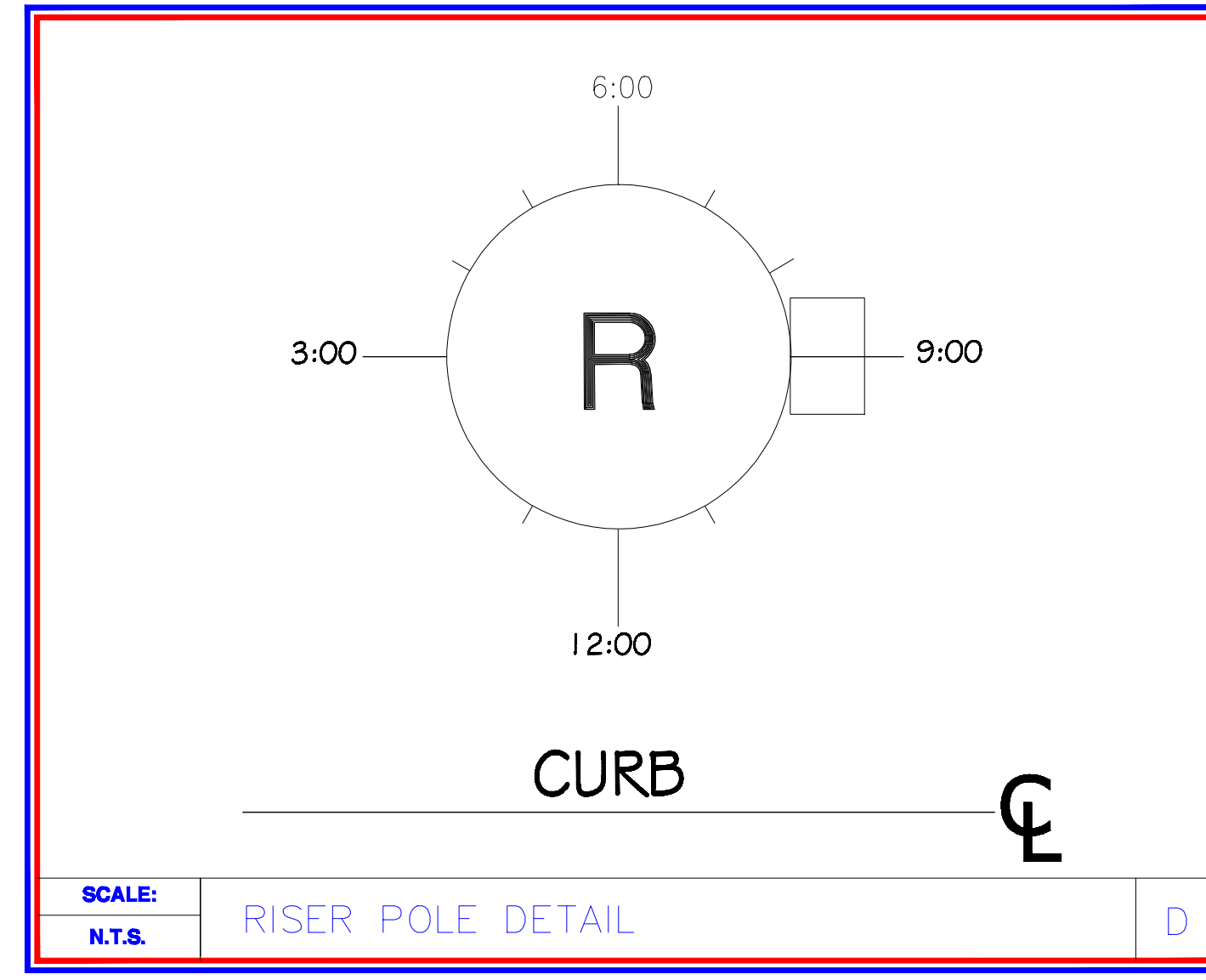
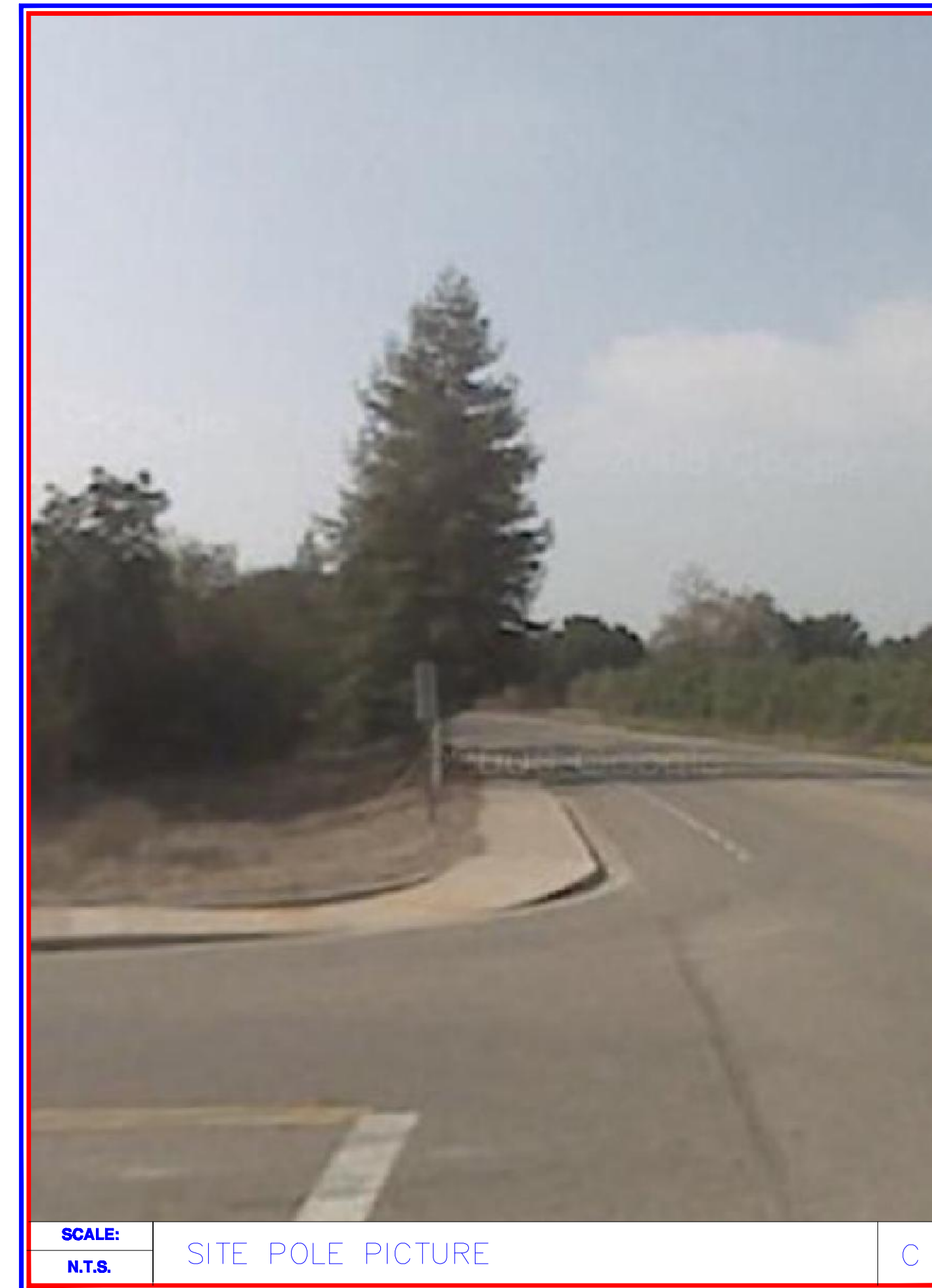
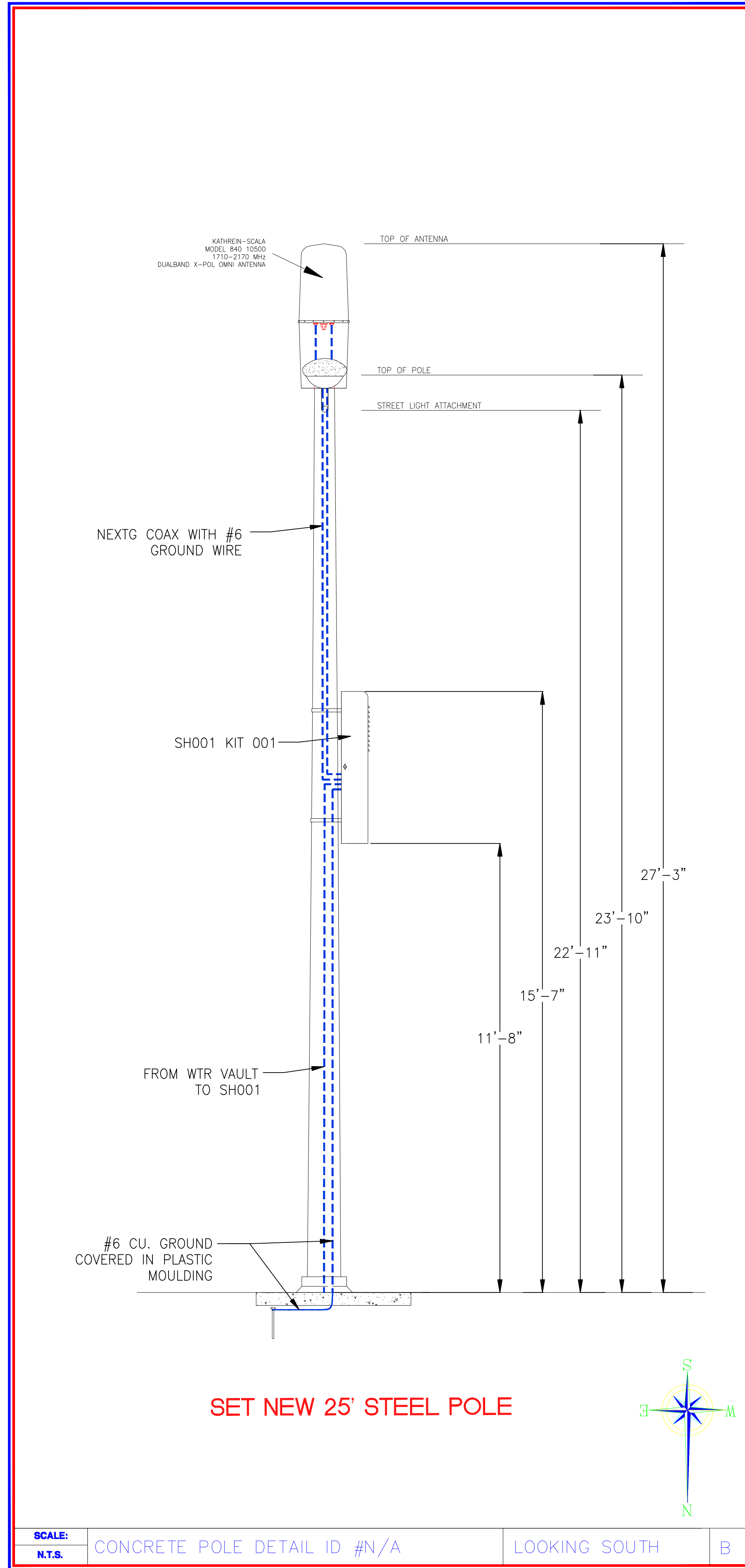
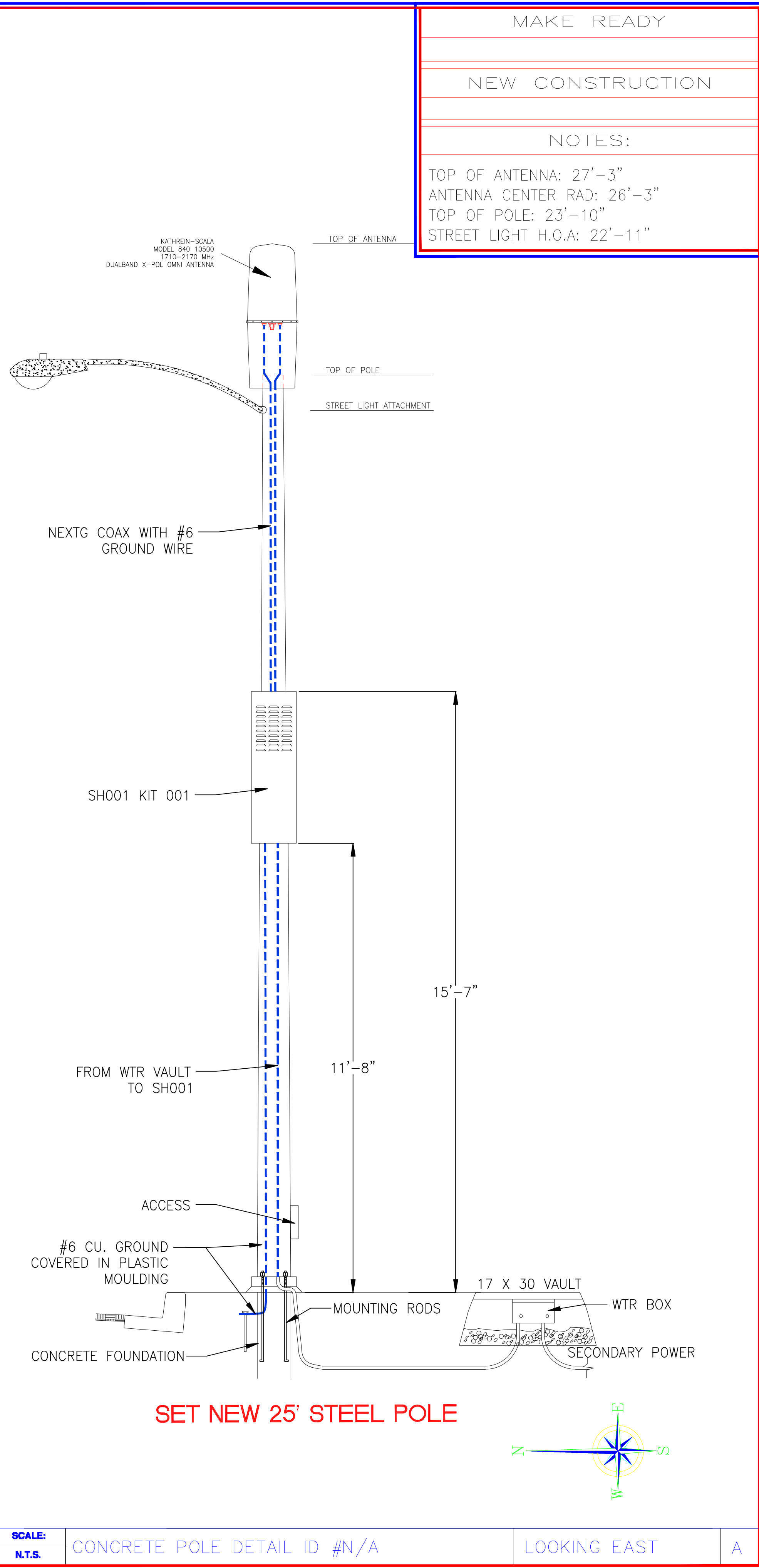
SHEET TITLE:

PROFILES

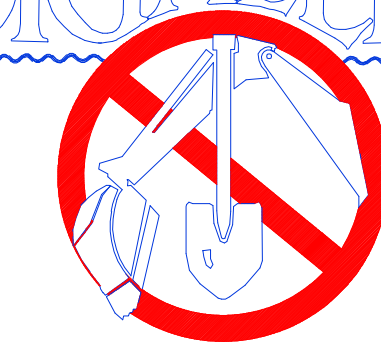
SHEET NUMBER: REVISION:

2

2 OF 5



DIGALERT



1-800-227-2600

CALL AT LEAST TWO DAYS BEFORE YOU DIG

UNDERGROUND SERVICE ALERT OF NORTHERN CALIFORNIA

TICKET # _____

PROJECT INFORMATION:

MPC1035CA-GOLN012
GOLETA
GOLETA, CA 93117

CURRENT ISSUE DATE:

PERMIT SUBMISSION:

04/15/2010

REV. DATE DESCRIPTION BY

REV.	DATE	DESCRIPTION	BY

PLANS PREPARED BY:

HP COMMUNICATIONS INC.

5720 THORNWOOD DR.
 GOLETA, CA 93117
 PHONE: (951) 471-1919

PLANS APPROVED BY:

REP:

COMMENTS:

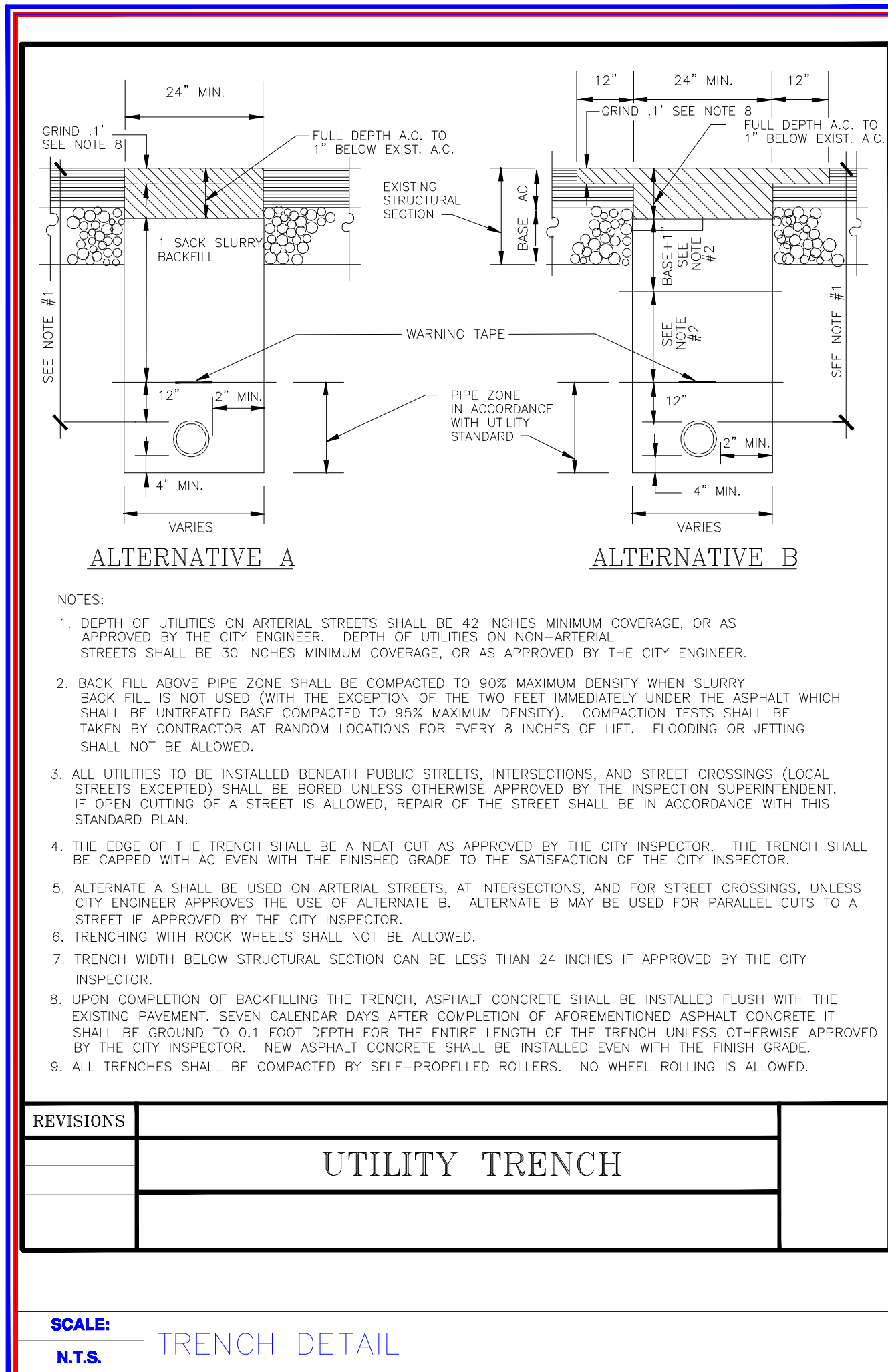
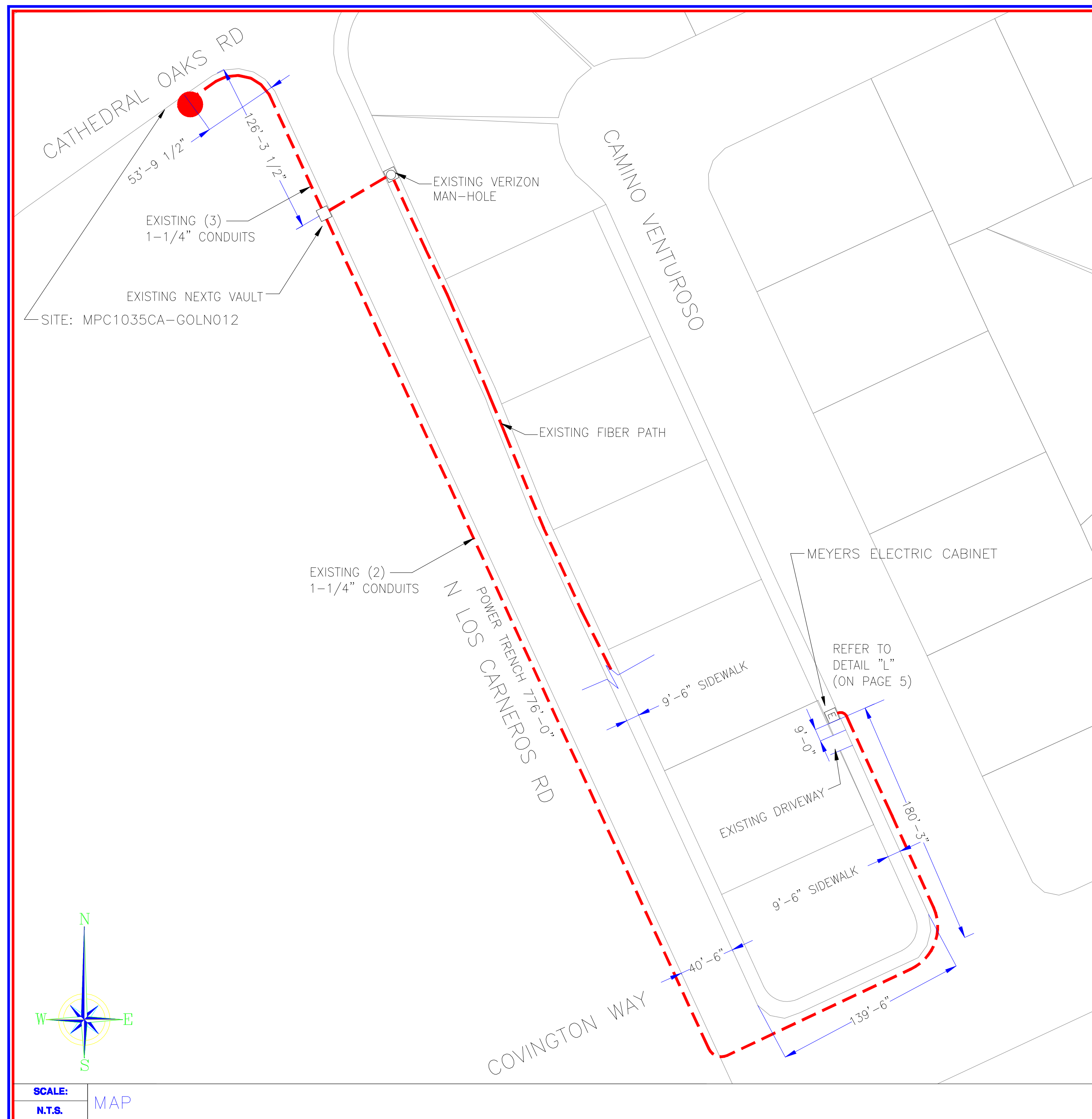
SHEET TITLE:

MAP

SHEET NUMBER: REVISION:

3

3 OF 5



MYERS POWER PRODUCTS, INC.
725 E. HARRISON CORONA, CA 92879

CAT. NO. MEUG20-100 (MOD)
SEE DRAWING 5101443 FOR WIRING DIAGRAM
120/240 V 1 Ø 3 W 100 AMPS 10K AIC

UTILITY DWP
DISTRIBUTOR NEXT G NETWORKS
CONTRACTOR

FINISH COLOR LT. GREEN WHITE DK. GREEN
 OTHER

STATE INSPECTION REQUIRED YES NO

U.L. LABEL INDUSTRIAL CONTROL
 CABINET & BOXES

NAMEPLATES BREAKER I.D.
PHENOLIC CONTRACT NO.
 LOCATION
 POWER POLE NO.

PHOTOCELL REQUIRED YES NO PHOTOCELL PROVISIONS YES NO

MYERS METERED UNDERGROUND SERVICE PEDESTAL
NEMA 3R CONSTRUCTION - STAINLESS STEEL HARDWARE
12GA GALVANEALD STEEL W/POWDER COAT FINISH
USE CLIP-IN BREAKERS-CUTLE-HAMMER DC DR GE THQC.
ALL FACTORY WIRING CODE GAUGE COPPER CONDUCTORS WITH 600V INSULATION
SERVICE TERMINATIONS NO. 6 AWG TO 250 MCM CU/AL

NO	DESCRIPTION	QTY	AMP	POLE	KAIC	MANUFACTURER	MYERS P/N
	CIRCUIT BREAKER	3			10K	CH TYPE QC	
	POWER BLOCK	1	100	2		MARATHON	052001
	DUPLEX RECEPT.	1	20	3W		BRYANT	052003

DATE: BY: JLT S/D #

SCALE: MEYERS ELECTRIC CABINET
N.T.S.

ION-M19P
ANDREW ION-19P IS A MULTI-BAND MULTI-OPERATOR REMOTE UNIT WITH VARIOUS EXTENSION UNITS. IT IS USED IN CONJUNCTION WITH A MASTER UNIT IN THE ION OPTICAL DISTRIBUTION SYSTEM. THIS SYSTEM TRANSPORTS MULTIPLE FREQUENCY BANDS SIMULTANEOUSLY (1900 MHZ AND 1700/2100 MHZ). PROVIDING A COST-EFFECTIVE SOLUTION FOR DISTRIBUTING CAPACITY FROM ONE OR MORE BASE STATIONS.

ELECTRICAL POWER SUPPLY MAINS POWER, VAC 85 TO 264 115 OR 230
POWER CONSUMPTION, WATTS 350
OPTICAL OPTICAL RETURN LOSS, DB 45 MINIMUM
CONNECTORS E2000/APC 8" 45 MINIMUM
FIBER TYPE, MM SINGLE MODE E9/125 0 TO 10
OPTICAL LINK BUDGET, DB COMPOSITE INPUT POWER @ OTDR MASTER SIDE, DBM
1900MHZ +3 COMPOSITE
1700/2100 MHZ +5 COMPOSITE

INTERFACE
BTS SIDE 1900MHZ 4
1700/2100 MHZ 4
SYSTEM OPTIMIZED FOR BTS POWER, DBM 33

ANTENNA PORT CONNECTOR N FEMALE
OUTPUT POWER SEE BAND SPECIFICATION
1900 MHZ
FREQUENCY RANGE, MHZ 1850 TO 1915
DOWNLINK UPLINK 1930 TO 1995
OUTPUT POWER PER CARRIER, DBM
NUMBER OF CARRIERS 1 2 4 8
GSM 43 40 37 34
TOMA/ EDGE 43 40 37 34
CDMA/EV-DO 43 40 37 34
WCDMA/HSDPA 43 40 37 34
SPURIOUS EMISSION <-13 DBM / 1MHZ
DL OUTPUT TOLERANCE OVER FREQUENCY, DB +1
DL OUTPUT TOLERANCE OVER TEMPERATURE, DB +0.5

INPUT ICP ICP3 OPTIMIZED -12
NOISE FIGURE OPTIMIZED -18
NOISE FIGURE, DB
ICP3 OPTIMIZED 11
NOISE FIGURE OPTIMIZED 6
1700/2100 MHZ (IN EXTENSION UNIT)
FREQUENCY RANGE, MHZ
UPLINK 1710 TO 1755
DOWNLINK 2110 TO 2155
OUTPUT POWER PER CARRIER, DBM
CDMA/EV-DO WCDMA/UMTS/HSDPA
+43 +43 @ 1 CARRIER
+40 +40 @ 2 CARRIERS
+37 +37 @ 4 CARRIERS
+34 +34 @ 8 CARRIERS
SPURIOUS EMISSION <-13 DBM / 1 MHZ
ADJACENT CHANNEL POWER, DBM -48
DL OUTPUT TOLERANCE OVER FREQ., DB +1
DL OUTPUT TOLERANCE OVER TEMP., DB +0.5
INPUT ICP3, DBM
ICP3 OPTIMIZED -12
NOISE FIGURE OPTIMIZED -18
* APPLICABLE TO SINGLE MODULATION MODE ONLY
** WITH ACTIVE COOLING

SCALE: REPEATER EQUIPMENT DIMENSIONS
N.T.S.

NextG Networks of California, Inc.
5720 THORNWOOD DR. GOLETA, CA 93117
PHONE: (408) 954-1580

PROJECT INFORMATION:
MPC1035CA-GOLN012
GOLETA
GOLETA, CA 93117

CURRENT ISSUE DATE:
04/15/2010

PERMIT SUBMISSION:

REV. DATE DESCRIPTION BY:

PLANS PREPARED BY:

KATHREIN SCALA DIVISION

840 10500
Dualband X-pol Omni Antenna

DUALBAND X-POL OMNI ANTENNA
840 10500

GENERAL SPECIFICATIONS:

FREQUENCY RANGE: 806-960 MHz
1710-2170 MHz

GAIN: 806-960 MHz 6 dBi (WITH 3-5 dB NULLS, TYPICAL)
1710-2170 MHz 8 dBi (WITH 6-8 dB NULLS, TYPICAL)

VSWR: <1.5:1

IMPEDANCE: 50 OHMS

INTERMODULATION (2x20w) IM3: <-150 dBc

POLARIZATION: +45° UPPER AND LOWER BAND
-45° UPPER AND LOWER BAND

CONNECTOR: 2 x 7/16 DIN FEMALE

ISOLATION: INTRASYSTEM >30 dB
INTERSYSTEM >40 dB (806-960//1710-2170 MHz)

MAXIMUM INPUT POWER: 806-960 MHz 250 WATTS (AT 50°C)
1710-2170 MHz 200 WATTS (AT 50°C)

RADOME COLOR: LIGHT GRAY (CUSTOM COLORS AVAILABLE AT ADDITIONAL COST)

WEIGHT: 45 LB. (20.4 kg)

HEIGHT: 24.2 INCHES. (615 mm)

RADOME DIAMETER: 18.3 INCHES (465 mm)

EQUIVALENT FLAT PLATE AREA: 1.6 FT² (0.148 m²)

WIND SURVIVAL RATING: 100 mph (160 kph)

SHIPPING DIMENSIONS: 32 x 20 x 19 INCHES (813 x 508 x 483 mm)

SHIPPING WEIGHT: 52 lbs. (23.6 kg)

MOUNTING: DESIGNED TO BE MOUNTED ON TOP OF A UTILITY POLE USING A CUSTOM MOUNTING BRACKET SUPPLIED BY THE CUSTOMER.

SCALE: ANTENNA SPECIFICATIONS
N.T.S.

ASSEMBLY

OMNI ANTENNA NOT INCLUDED IN KIT.

STREETLIGHT POLE INSERT

FOAM SKIRT

SCALE: ANTENNA INSTALLATION KIT
N.T.S.

FRONT VIEW (SH001)

SIDE VIEW

ASSEMBLY

SHROUD COVER PROFILE

SCALE: SHROUD SPECIFICATIONS (SH001)
N.T.S.

HP COMMUNICATIONS INC.
5720 THORNWOOD DR. GOLETA, CA 93117
PHONE: (951) 471-1919

PLANS APPROVED BY:

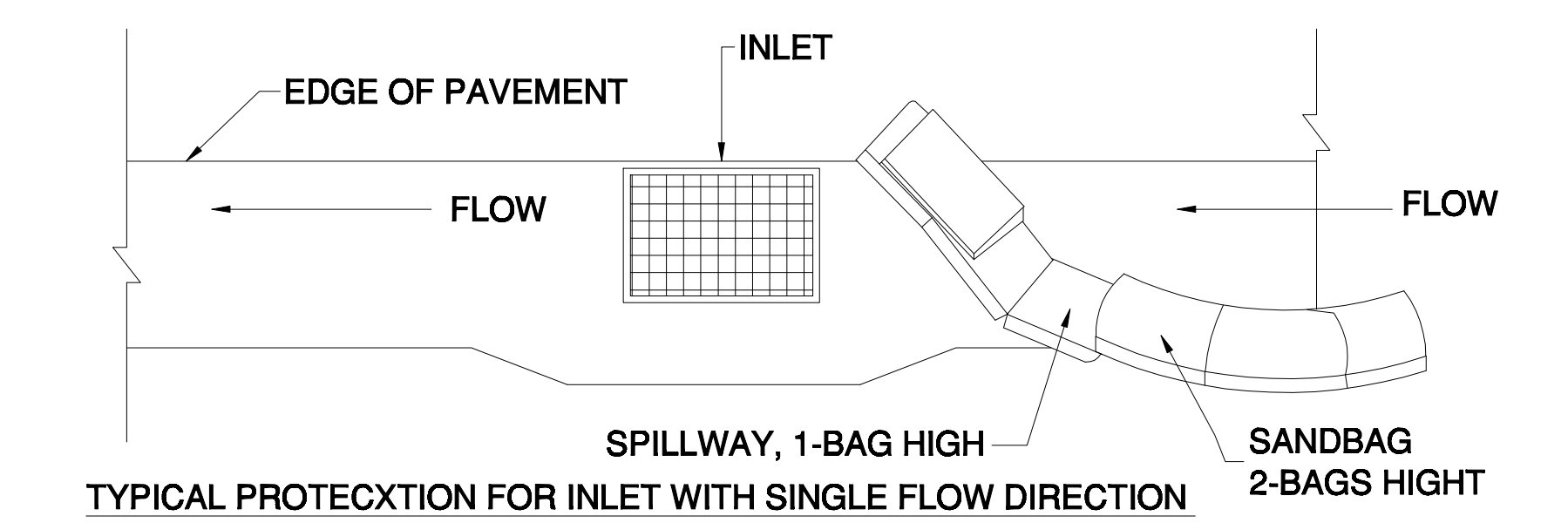
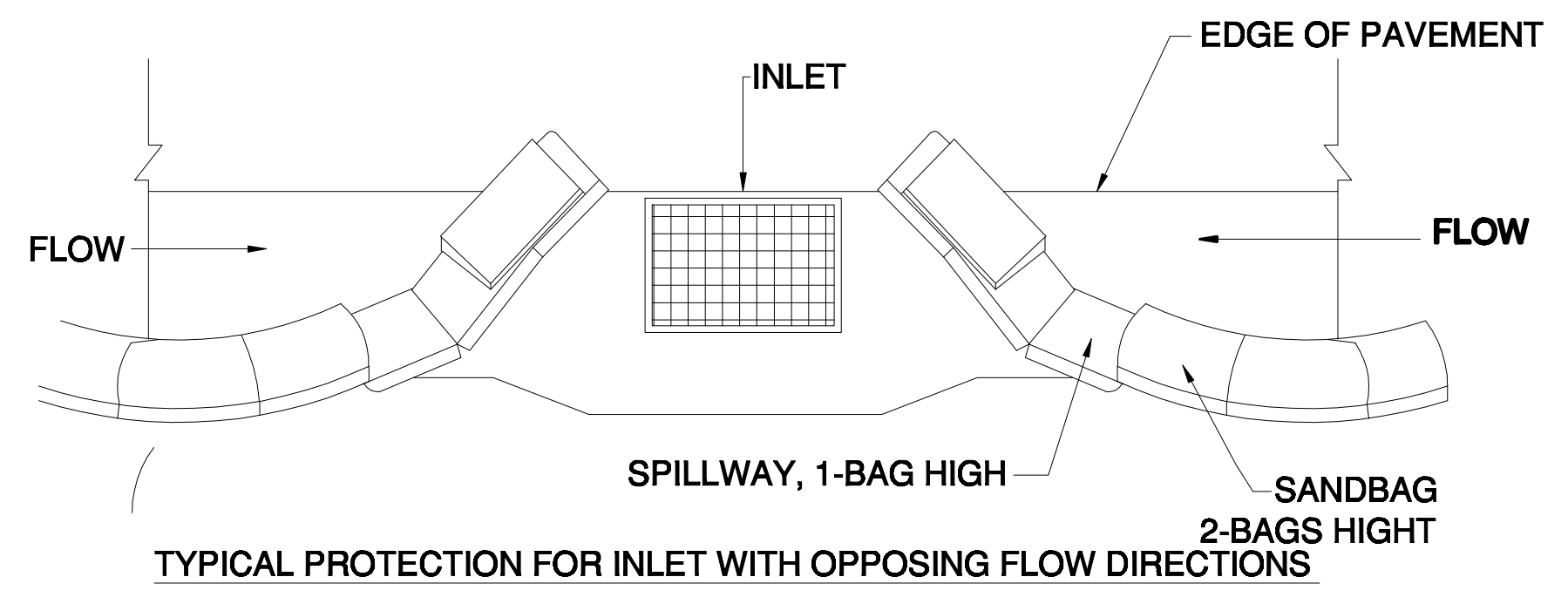
NextG Networks of California, Inc.

REP:

COMMENTS:

SHEET TITLE:
TYPICALS PAGE 1

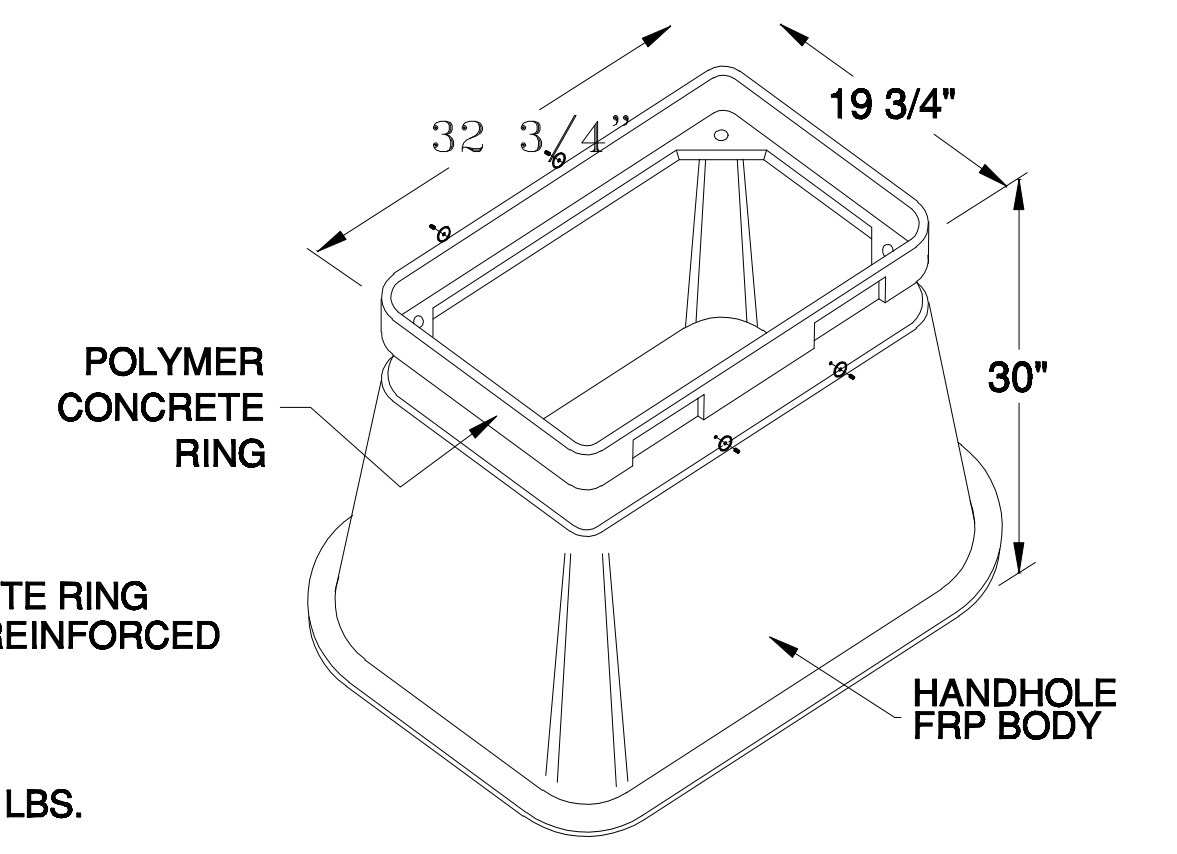
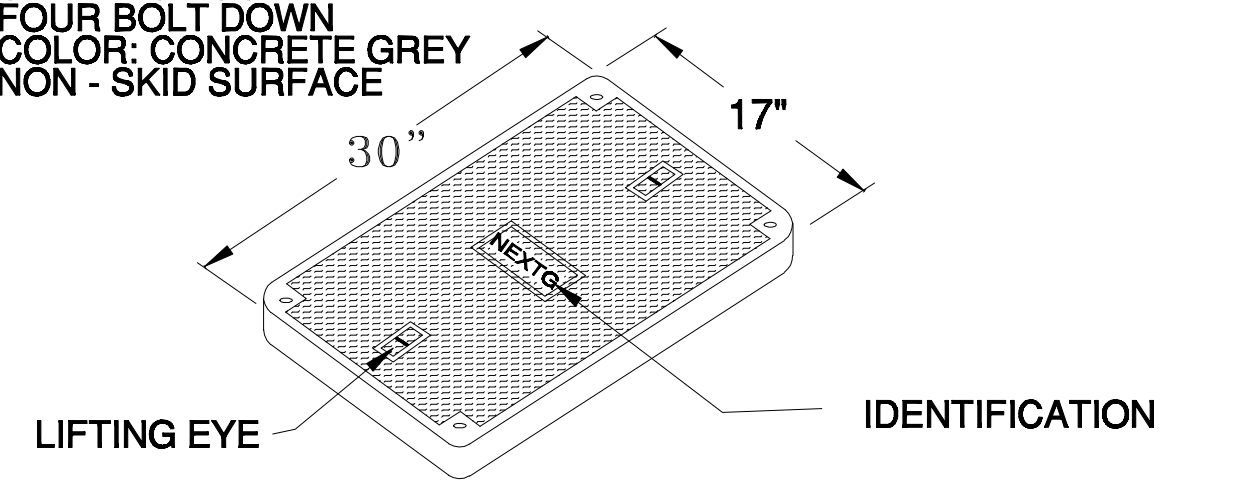
SHEET NUMBER: 4 REVISION: 4 OF 5



- NOTES:
1. INTENDED FOR SHORT-TERM USE.
 2. USE TO INHIBIT NON-STORM WATER FLOW.
 3. ALLOW FOR PROPER MAINTENANCE AND CLEANUP.
 4. BAGS MUST BE REMOVED AFTER ADJACENT OPERATION IS COMPLETED.
 5. NOT APPLICABLE IN AREAS WITH HIGH SILTS AND CLAYS WITHOUT FILTER FABRIC.

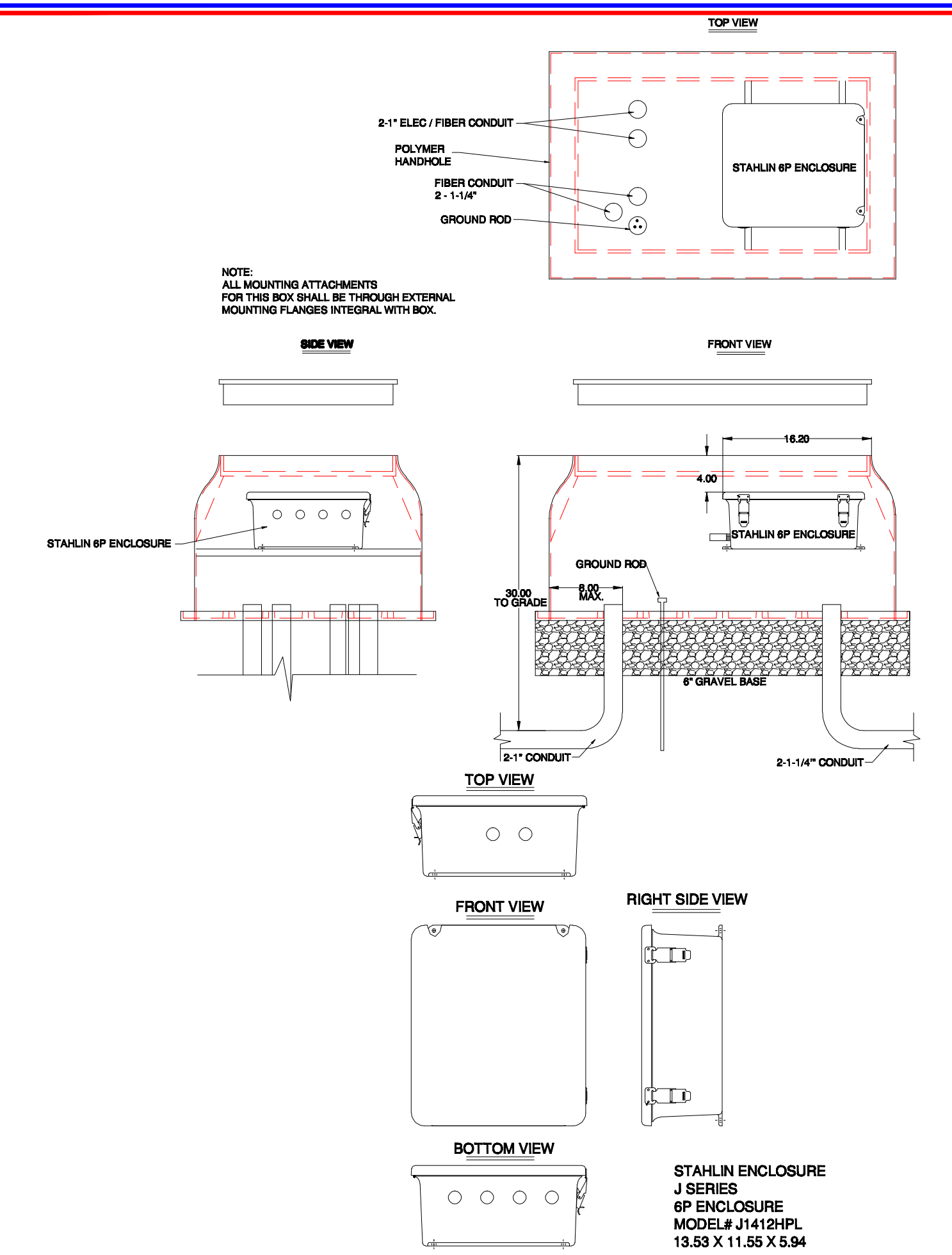
SCALE: N.T.S. STORM DRAIN INLET PROTECTION F

- COVER FEATURES:
- * PW - 10,400 LBS. WHEEL LOAD ON 10" X 10" PLATE
 - * APPROX. WT. = 72 LBS.
 - * POLYMER CONCRETE
 - * ONE PIECE COVER
 - * FOUR BOLT DOWN
 - * COLOR: CONCRETE GREY
 - * NON - SKID SURFACE

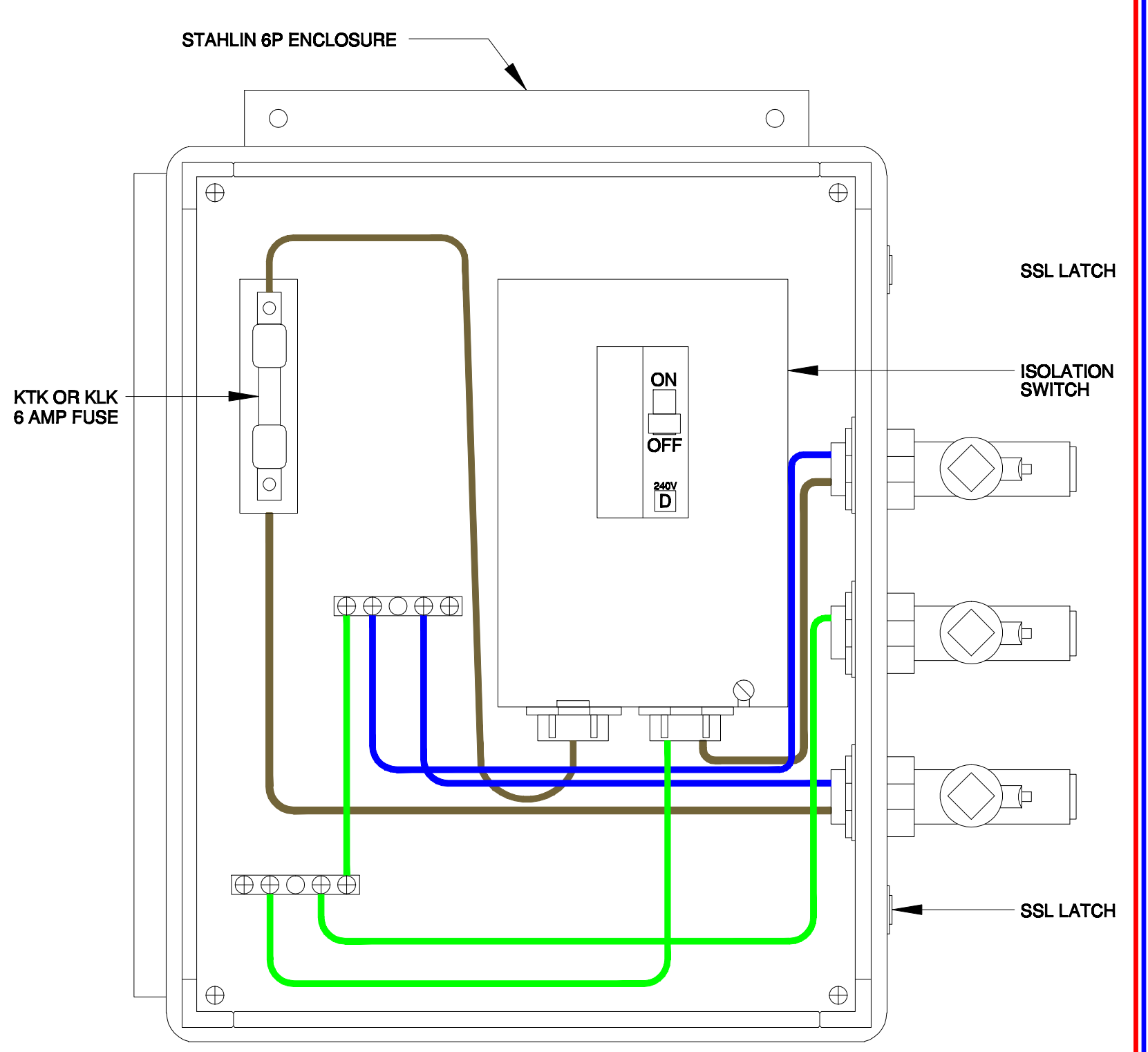


- VAULT FEATURES:
- * POLYMER CONCRETE RING AND FIBERGLASS REINFORCED POLYMER BODY
 - * COLOR OF RING: CONCRETE GREY
 - * APPROX. WT. = 123 LBS.

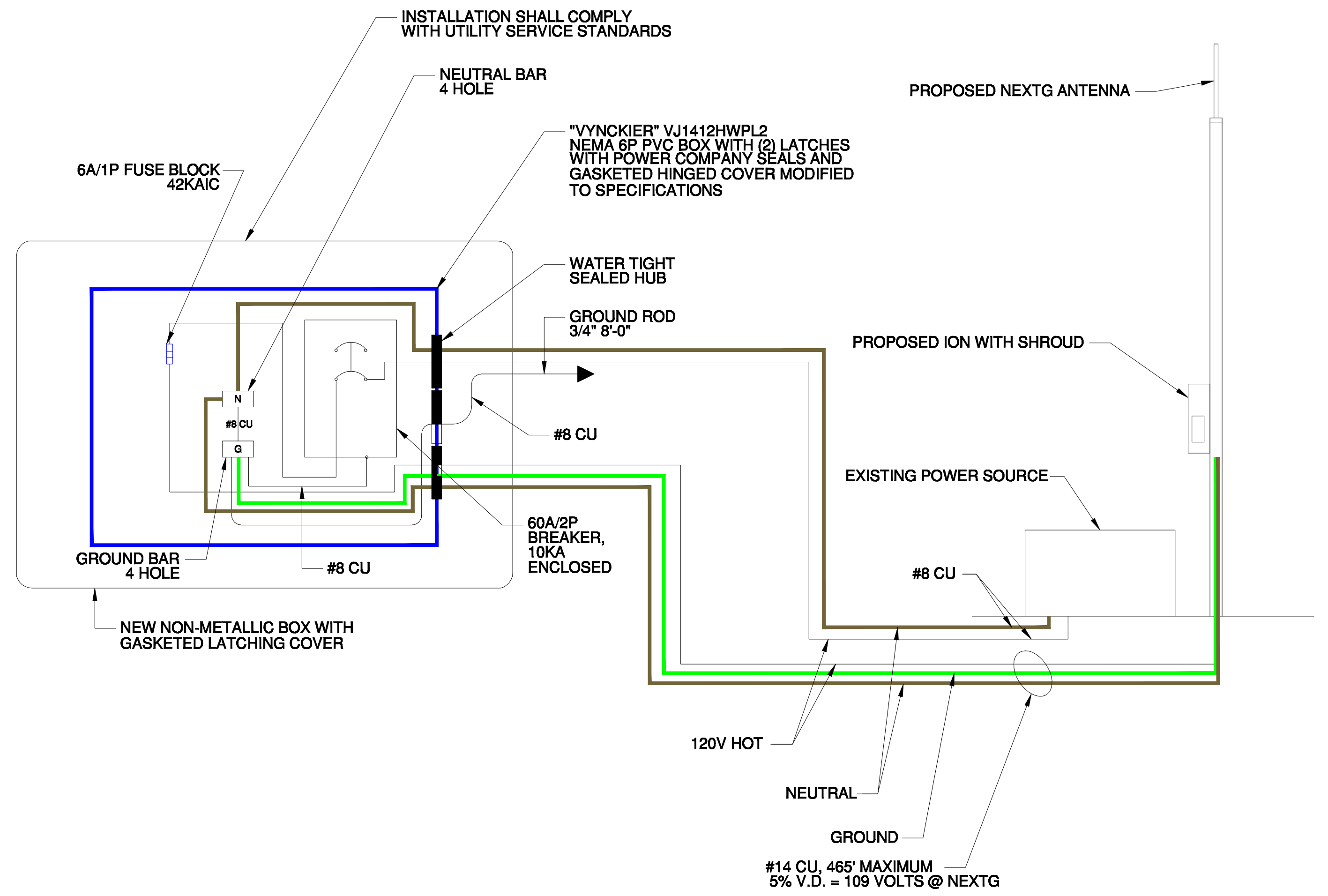
SCALE: N.T.S. 17" X 30" CONNECTOR HANDHOLE G



SCALE: N.T.S. STAHLIN 6P ENCLOSURE (WTR BOX) H



SCALE: N.T.S. WTR FUSE BOX I



SCALE: N.T.S. POWER SINGLE LINE DIAGRAM J

PROJECT INFORMATION:

MPC1035CA-GOLN012
GOLETA
GOLETA, CA 93117

CURRENT ISSUE DATE:

04/15/2010

PERMIT SUBMISSION:

REV. DATE DESCRIPTION BY

PLANS PREPARED BY:

HP COMMUNICATIONS INC.

5720 THORNWOOD DR.
 GOLETA, CA 93117
 PHONE: (951) 471-1919

PLANS APPROVED BY:

REP:

COMMENTS:

SHEET TITLE:

TYPICALS PAGE 2

SHEET NUMBER: REVISION: