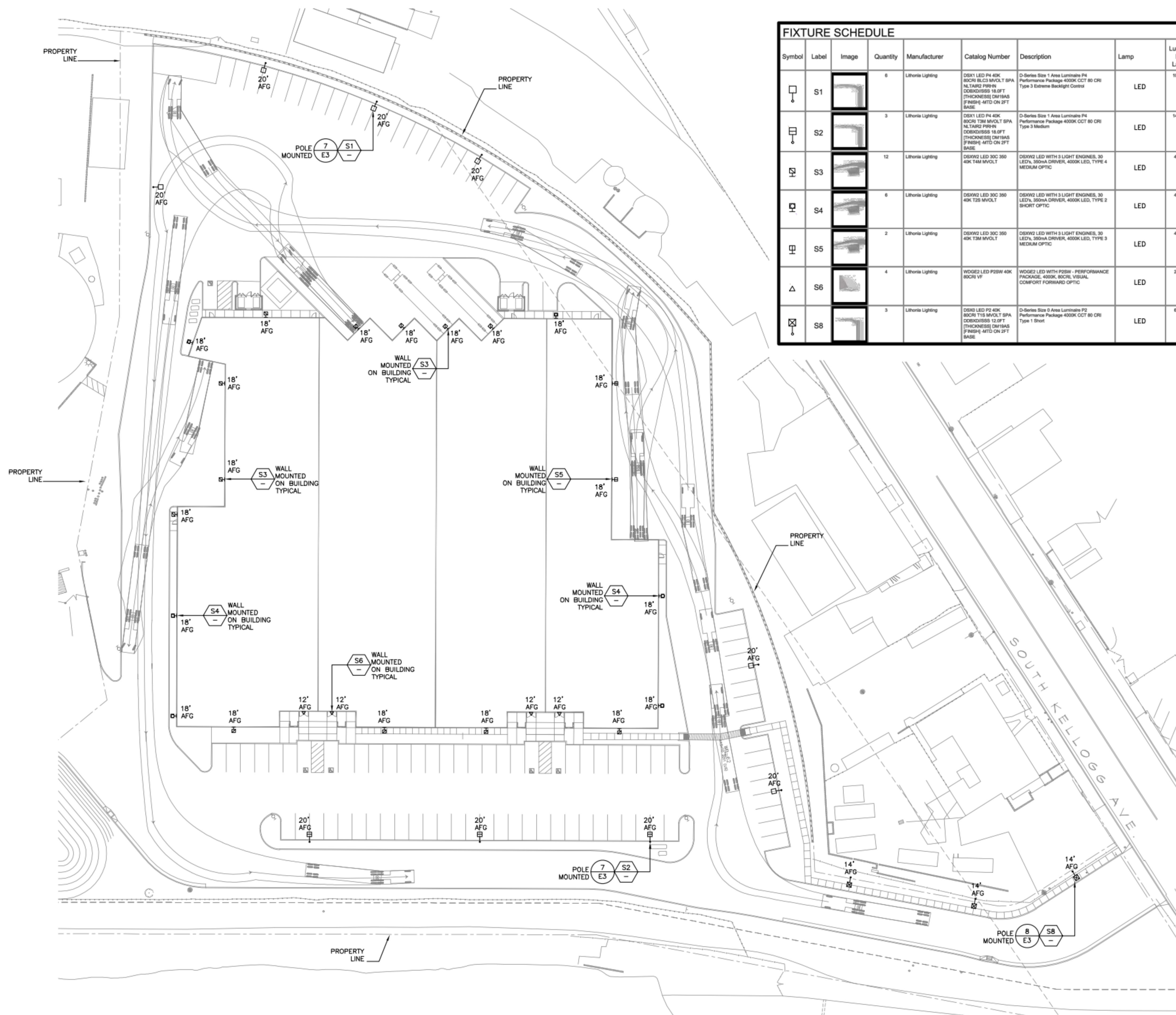


Appendix Q

Photometric Plan

SHEET NOTES

1. VERIFY LOCATION OF ALL DEVICES ON ARCHITECTURAL PLANS AND IN FIELD PRIOR TO ROUGH IN.
2. MAINTAIN A MAXIMUM 2% VOLTAGE DROP ON ALL LIGHTING HOMERUNS.
3. ALL LIGHTING FIXTURES, EXCEPT EMERGENCY, SHALL BE CONTROLLED BY AUTOMATIC LIGHTING CONTROL SYSTEM AS REQUIRED BY STATE OF CALIFORNIA TITLE 24 REGULATIONS.
4. TIMING CONTROL. OUTDOOR LIGHTING MUST BE TURNED OFF DURING DAYLIGHT HOURS AND DURING ANY HOURS WHEN THE STRUCTURE IS NOT IN USE.
5. LIGHT TRESPASS. TO PREVENT LIGHT TRESPASS OR GLARE, ALL LIGHTS MUST BE DIRECTED DOWNWARD, FULLY SHIELDED, AND FULL CUTOFF.
6. LIGHT LEVELS AT PROPERTY LINES. THE LIGHT LEVEL AT PROPERTY LINES MUST NOT EXCEED 0.1 FOOT-CANDELES AND MUST BE DIRECTED AWAY FROM ALL ENVIRONMENTAL SENSITIVE HABITAT AREAS.



Symbol	Label	Image	Quantity	Manufacturer	Catalog Number	Description	Lamp	Lumens Per Lamp	Light Loss Factor	Wattage	Distribution	Notes
S1			6	Lithonia Lighting	DD8X1 LED P4 40K 60CRI 18" CM MVOLT SPA NL TARG PBRH (THICKNESS) DM18AS 17" FINISH-MTD ON 2FT BASE	D-Series Size 1 Area Luminaire P4 Performance Package 4000K CCT 80 CRI Type 3 Extreme Backlight Control	LED	10700	0.92	123.94	TYPE III, SHORT, BUG RATING: B1 - U0 - G3	
S2			3	Lithonia Lighting	DD8X1 LED P4 40K 60CRI 18" CM MVOLT SPA NL TARG PBRH (THICKNESS) DM18AS 17" FINISH-MTD ON 2FT BASE	D-Series Size 1 Area Luminaire P4 Performance Package 4000K CCT 80 CRI Type 3 Medium	LED	14710	0.92	123.94	TYPE IV, MEDIUM, BUG RATING: B1 - U0 - G4	
S3			12	Lithonia Lighting	DD8W2 LED 30C 300 40K T44 MVOLT	DD8W2 LED WITH 3 LIGHT ENGINES, 30 LEVA, 300MA DRIVER, 4000K LED, TYPE 4 MEDIUM OPTIC	LED	4422	0.92	36	TYPE IV, SHORT, BUG RATING: B1 - U0 - G2	
S4			6	Lithonia Lighting	DD8W2 LED 30C 300 40K T44 MVOLT	DD8W2 LED WITH 3 LIGHT ENGINES, 30 LEVA, 300MA DRIVER, 4000K LED, TYPE 2 SHORT OPTIC	LED	4487	0.92	36	TYPE II, SHORT, BUG RATING: B1 - U0 - G1	
S5			2	Lithonia Lighting	DD8W2 LED 30C 300 40K T44 MVOLT	DD8W2 LED WITH 3 LIGHT ENGINES, 30 LEVA, 300MA DRIVER, 4000K LED, TYPE 3 MEDIUM OPTIC	LED	4483	0.92	36	TYPE IV, MEDIUM, BUG RATING: B1 - U0 - G2	
S6			4	Lithonia Lighting	W06E2 LED P55W 40K 60CRI VF	W06E2 LED WITH P55W - PERFORMANCE PACKAGE, 4000K, 60CRI, VISUAL COMFORT FORMING OPTIC	LED	2049	0.92	14.78	TYPE II, VERY SHORT, BUG RATING: B1 - U0 - G0	
S8			3	Lithonia Lighting	DD8D LED P2 40K 60CRI 17.5" MVOLT SPA NL TARG PBRH (THICKNESS) DM18AS 17" FINISH-MTD ON 2FT BASE	D-Series Size 0 Area Luminaire P2 Performance Package 4000K CCT 80 CRI Type 1 Short	LED	6051	0.92	45.14	TYPE II, SHORT, BUG RATING: B1 - U0 - G1	

1 SITE LIGHTING PLAN
SCALE: 1" = 30'-0"

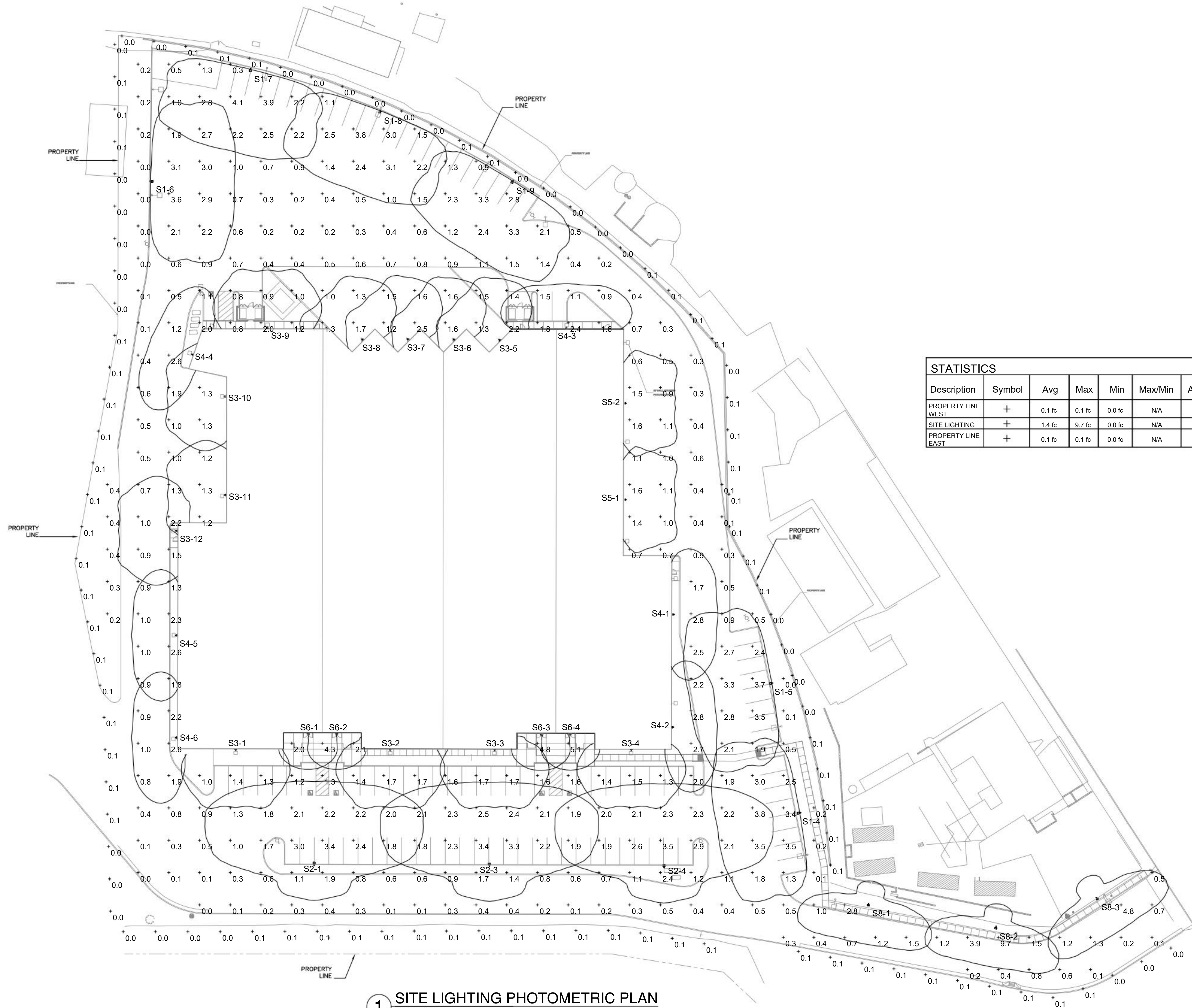
TIMING DEVICES USED TO CONTROL THE HOURS SET FOR ILLUMINATION, AS WELL AS THE PROPOSED HOURS WHEN EACH FIXTURE WILL BE OPERATED SHALL BE DUSK TO DAWN 7 DAYS A WEEK.

GOLETA BUSINESS CENTER
907 SOUTH KELLOGG AVE., GOLETA, CA

NOVEMBER 17, 2022



RASMUSSEN & ASSOCIATES
Architecture
Planning
Interiors
21 S. CALIFORNIA STREET
VENTURA, CA 93001
VOICE: (805) 648-1234
CONTACT: JAY LOMAGNO
JLOMAGNO@RA-Arch.com



STATISTICS							
Description	Symbol	Avg	Max	Min	Max/Min	Avg/Min	UG
PROPERTY LINE WEST	+	0.1 fc	0.1 fc	0.0 fc	N/A	N/A	-1.0
SITE LIGHTING	+	1.4 fc	9.7 fc	0.0 fc	N/A	N/A	-1.0
PROPERTY LINE EAST	+	0.1 fc	0.1 fc	0.0 fc	N/A	N/A	-1.0

1 SITE LIGHTING PHOTOMETRIC PLAN
SCALE: NONE

WDGE2 LED Architectural Wall Sconce Visual Comfort Optic

Specifications

Depth (D1): 7"
Depth (D2): 1.5"
Height: 9"
Width: 11.5"
Weight (without options): 13.5 lbs.

WDGE LED Family Overview

Model	Optic	Mounting	Length	Height	Weight	Power	Beam Spread	Color Temp.
WDGE2 LED	Visual Comfort	90°	7"	9"	13.5 lbs	20W	30°	3000K
WDGE2 LED	Visual Comfort	150°	7"	9"	13.5 lbs	20W	30°	3000K
WDGE2 LED	Precision Reflector	150°	7"	9"	13.5 lbs	20W	30°	3000K
WDGE2 LED	Precision Reflector	150°	7"	9"	13.5 lbs	20W	30°	3000K

Ordering Information

EXAMPLE: WDGE2 LED P3 40K BCRI VF MVOLT SRM DBRDX

Code	Color	Beam Spread	Mounting	Optic	Power	Color Temp.	Options
WDGE2 LED	P3	40K	BCRI	VF	MVOLT	SRM	DBRDX

Shipping Information

EXAMPLE: WDGE2 LED P3 40K BCRI VF MVOLT SRM DBRDX

Code	Color	Beam Spread	Mounting	Optic	Power	Color Temp.	Options
WDGE2 LED	P3	40K	BCRI	VF	MVOLT	SRM	DBRDX

D-Series Size 2 LED Wall Luminaire

Specifications

Width: 18.12"
Depth: 10"
Height: 7.58"
Weight: 21 lbs.

Ordering Information

EXAMPLE: DSX2 LED 30C 700 40K T3M MVOLT DBRDX

Code	Color	Beam Spread	Mounting	Optic	Power	Color Temp.	Options
DSX2 LED	30C	700	40K	T3M	MVOLT	DBRDX	

D-Series Size 1 LED Area Luminaire

Specifications

Length: 32.71"
Width: 14.26"
Height H1: 7.88"
Height H2: 2.77"
Weight: 24 lbs.

Ordering Information

EXAMPLE: DSX1 LED P7 40K 70CRI T3M MVOLT SPA NLAIR2 PIRHN DBRDX

Code	Color	Beam Spread	Mounting	Optic	Power	Color Temp.	Options
DSX1 LED	P7	40K	70CRI	T3M	MVOLT	SPA	NLAIR2 PIRHN DBRDX

D-Series Size 0 LED Area Luminaire

Specifications

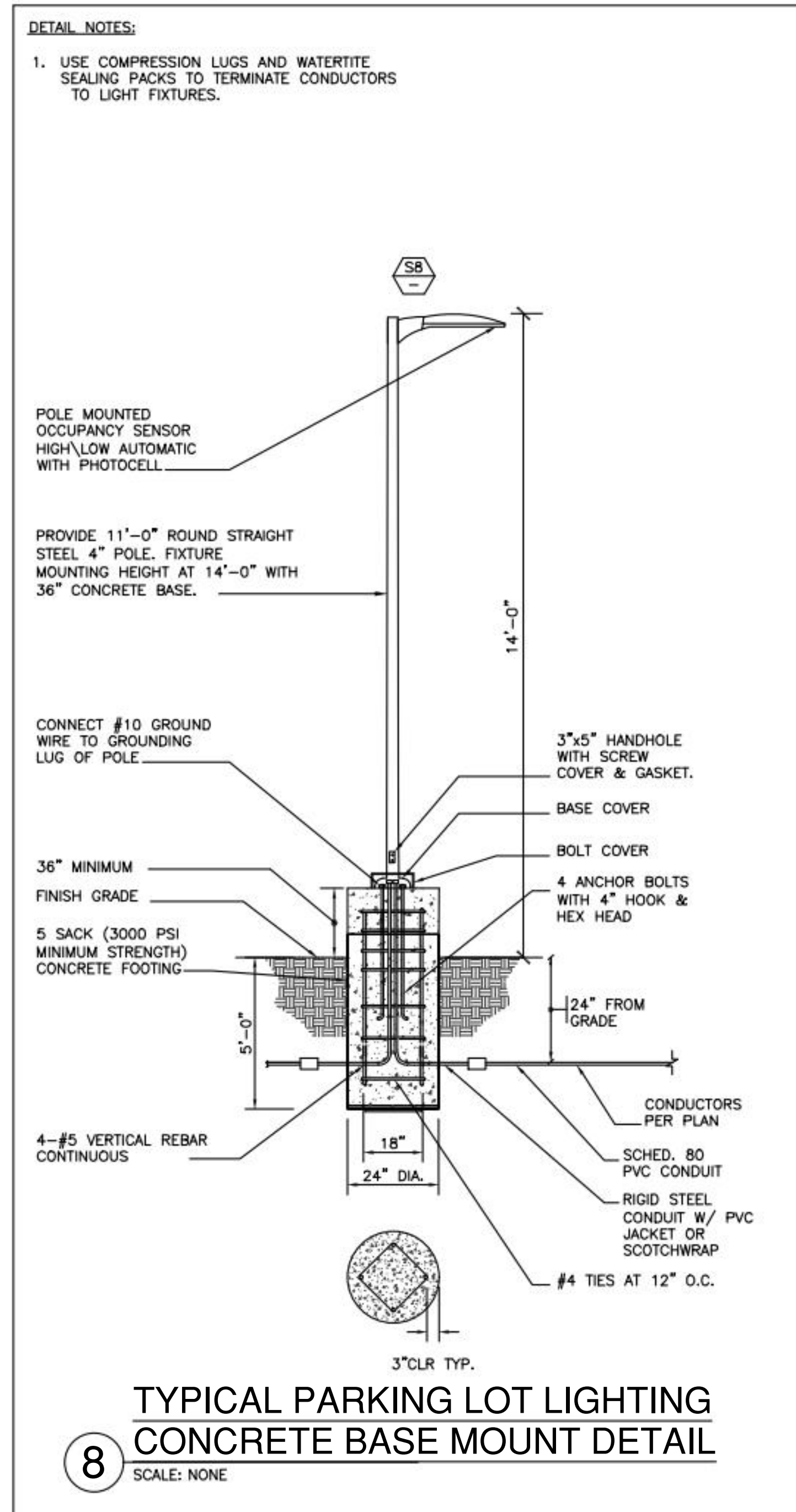
Length: 26.18"
Width: 14.06"
Height H1: 7.26"
Height H2: 7.46"
Weight: 23 lbs.

Ordering Information

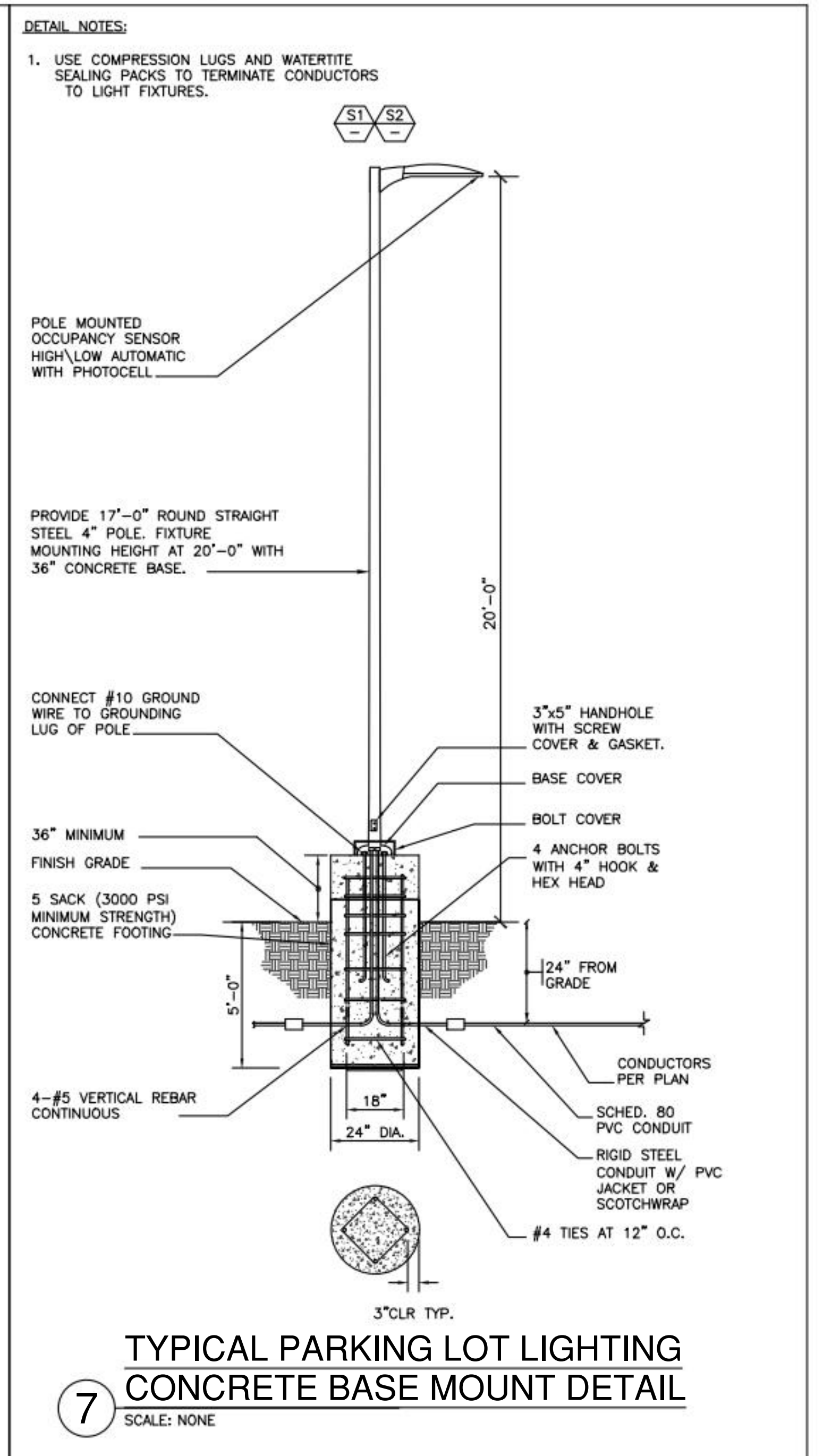
EXAMPLE: DSX0 LED P6 40K 70CRI T3M MVOLT SPA NLAIR2 PIRHN DBRDX

Code	Color	Beam Spread	Mounting	Optic	Power	Color Temp.	Options
DSX0 LED	P6	40K	70CRI	T3M	MVOLT	SPA	NLAIR2 PIRHN DBRDX

4. FIXTURE TYPE "S6"
SCALE: NONE



3. FIXTURE TYPE "S3 & S4 & S5"
SCALE: NONE



2. FIXTURE TYPE "S1 & S2"
SCALE: NONE

1. FIXTURE TYPE "S8"
SCALE: NONE

GR 2400™ Control Panel

Overview

The GR 2400 Relay Panel is part of the expansive GR 2400 system and is a 100% digital solution to lighting control. Ideal for centralized panel applications, the GR 2400 Relay Panel can link up to 127 addresses of digital devices, including other LC&D panels and switches, whichaisy-chain together in any sequence using Cat. 5 patch cables with RJ45 connectors.

Features

- Astronomical time clock with 32-channels and a large display (21 X 8 characters) which can be used to program an entire system. Non-volatile memory holds all programming indefinitely.
- 10 year battery back-up for time-of-day
- Mixed voltage (120V, 277V), power controllability
- Manual override of the entire panel, individual relays and zones

Warranty

3-year limited warranty. Complete warranty terms located at: www.acuitycontrols.com/warranty

ORDERING INFORMATION

ENCLOSURE	Example: GR2448 ENC 5M 1B1
Relay Panel Enclosure	Mounting, NEMA Rating, Knockouts
GR2448 ENC 48 relay enclosure	SM NE1 Surface Mount, NEMA 1 with knockouts
GR2432 ENC 32 relay enclosure	FM NE1 Flush Mount, NEMA 1 with knockouts
	SM NE1 NFD Surface Mount, NEMA 1 no knockouts
	FM NE1 NFD Flush Mount, NEMA 1 no knockouts

INTERIOR	Example: GR2448 INT 12NCL DTC DV			
Relay Panel Interior	Relays	Clock Options	Transformer	Voltage Barrier
GR2448 INT 48 relay interior	48/32/16/8	DTC	DV	1/8"
GR2432 INT 32 relay interior	32/16/8	REMOTE	CNOV	3/8"
				3/8"
				4/8"

ACUITY CONTROLS
15392 EXP-6-30-23
855 East Front Street Phone (805) 641-4012
Ventura, California 93001 Fax (805) 641-0450
www.acuitycontrols.com
Copyright © 2023

5. LIGHTING CONTROL RELAY PANEL
SCALE: NONE

C. HOOD & ASSOCIATES, INC.
CONSULTING ELECTRICAL ENGINEERS

15392 EXP-6-30-23
855 East Front Street Phone (805) 641-4012
Ventura, California 93001 Fax (805) 641-0450
www.choodassociates.com
Copyright © 2023

PROFESSIONAL ENGINEER
15392 EXP-6-30-23
ELECTRICAL ENGINEER
STATE OF CALIFORNIA

RASMUSSEN & ASSOCIATES
Architecture
Planning
Interiors

21 S. CALIFORNIA STREET
VENTURA, CA 93001
VOICE: (805) 648-1234
CONTACT: JAY LOMAGNO
JLOMAGNO@Arch.com