

OWNER: SOUTHERN PAC R R
073-010-011

OWNER: SOUTHERN PAC R R
073-010-014

OWNER: HAYWARD LUMBER COMPA
20 S LA PATERA LN
073-080-075

OWNER: CITY OF GOLETA
27 S LA PATERA LN
073-050-033

27 SOUTH LA PATERA LANE
GOLETA, CA
APN 073-050-033
AREA = 2.48 ACRES±
BUILDING FOOTPRINT
40,463± Square Feet

MATCH LINE SEE SHEET 2



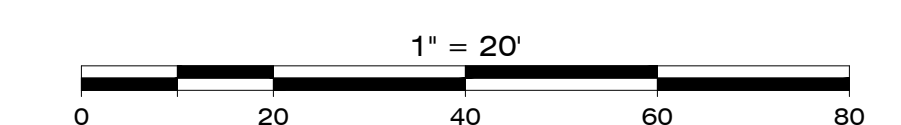
201 N. Calle Cesar Chavez, Suite 300,
Santa Barbara, CA 93103
805-692-6921
www.mnsengineers.com

La Patera Ln Combined Topo.dwg * 06/09/2023 * RLS * E-File

LA PATERA TRAIN DEPOT Topographic Base Map

PROJECT NO.
CIGOL.190063.00

SHEET 1
OF 5



REV DATE BY



MATCH LINE SEE SHEET 1

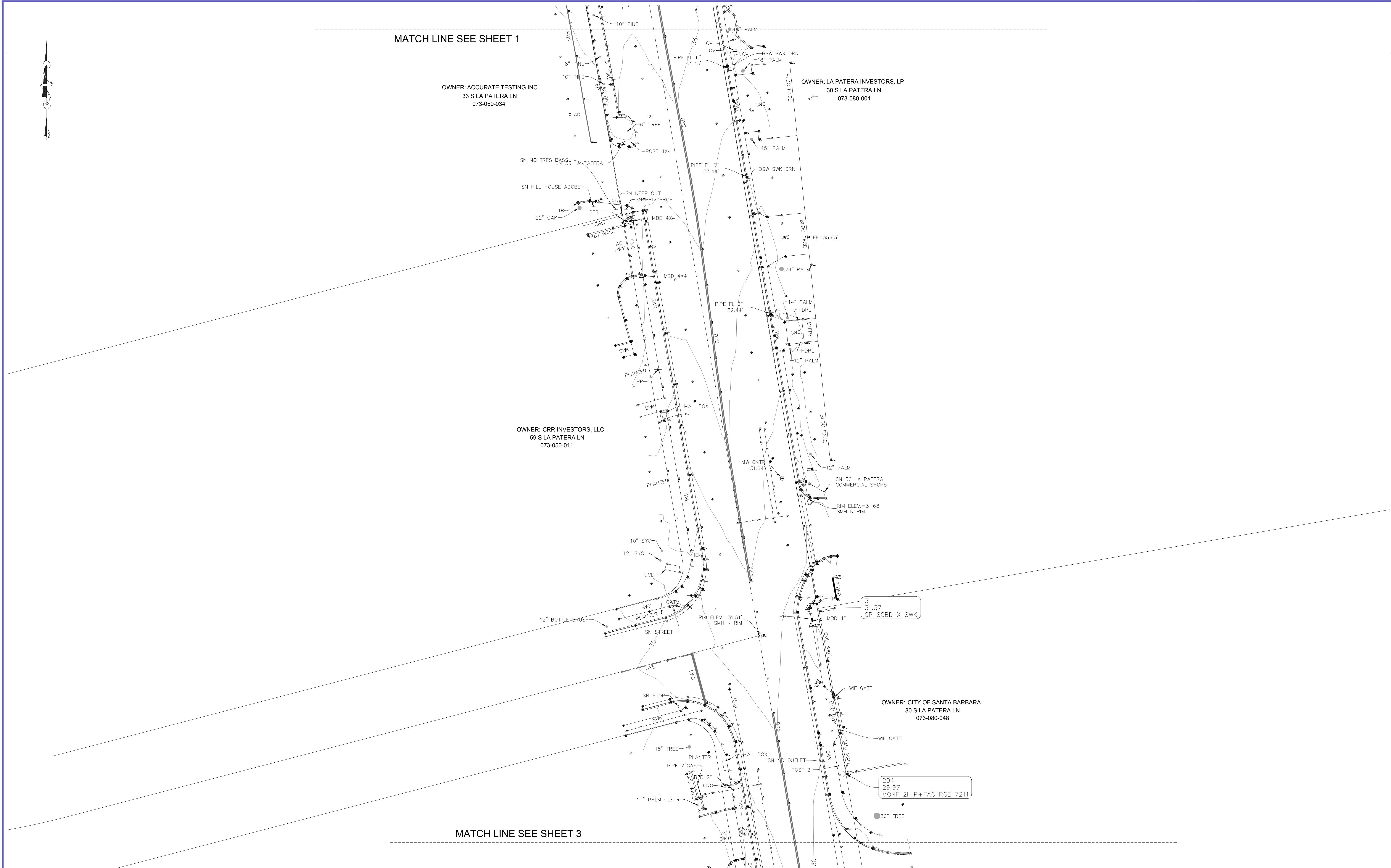
OWNER: ACCURATE TESTING INC
33 S LA PATERA LN
073-050-034

OWNER: LA PATERA INVESTORS, LP
30 S LA PATERA LN
073-080-001

OWNER: CRR INVESTORS, LLC
59 S LA PATERA LN
073-050-011

OWNER: CITY OF SANTA BARBARA
80 S LA PATERA LN
073-080-048

MATCH LINE SEE SHEET 3



REV	DATE	BY

MNS
201 N. Calle Cesar Chavez, Suite 300,
Santa Barbara, CA 93103
805-692-6921
www.mnsengineers.com

La Patera Ln Combined Topo.dwg * 06/09/2023 * RLS * E-File

LA PATERA TRAIN DEPOT
Topographic Base Map

PROJECT NO.
CIGOL.190063.00

SHEET 2
OF 5

1" = 20'



MATCH LINE SEE SHEET 2

OWNER: BARTLETT, JAMES/SHIRLEY TRUST 7/5/00
6325 LINDMAR DR
073-050-021

23
29.34
CP SCBX TC

RIM ELEV.=28.65'
UMH CNTR 36"

PP 436534SE

BFR 6"
FSVC CONNECTION

36" PALM

PP VZ100279

OWNER: RASMUSSEN RASMUSSEN & RASMUSSEN
111 S LA PATERA LN
073-050-039

22
25.31
CP SCBX SWK

12" PINE

OWNER: CITY OF SANTA BARBARA
103 DAVID LOVE PL
073-080-045

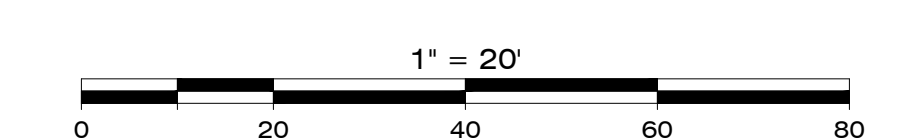
MATCH LINE SEE SHEET 4



201 N. Calle Cesar Chavez, Suite 300,
Santa Barbara, CA 93103
805-692-6921
www.mnsengineers.com

La Patera Ln Combined Topo.dwg * 06/09/2023 * RLS * E-File

LA PATERA TRAIN DEPOT Topographic Base Map



PROJECT NO.
CIGOL.190063.00

SHEET 3
OF 5

REV	DATE	BY



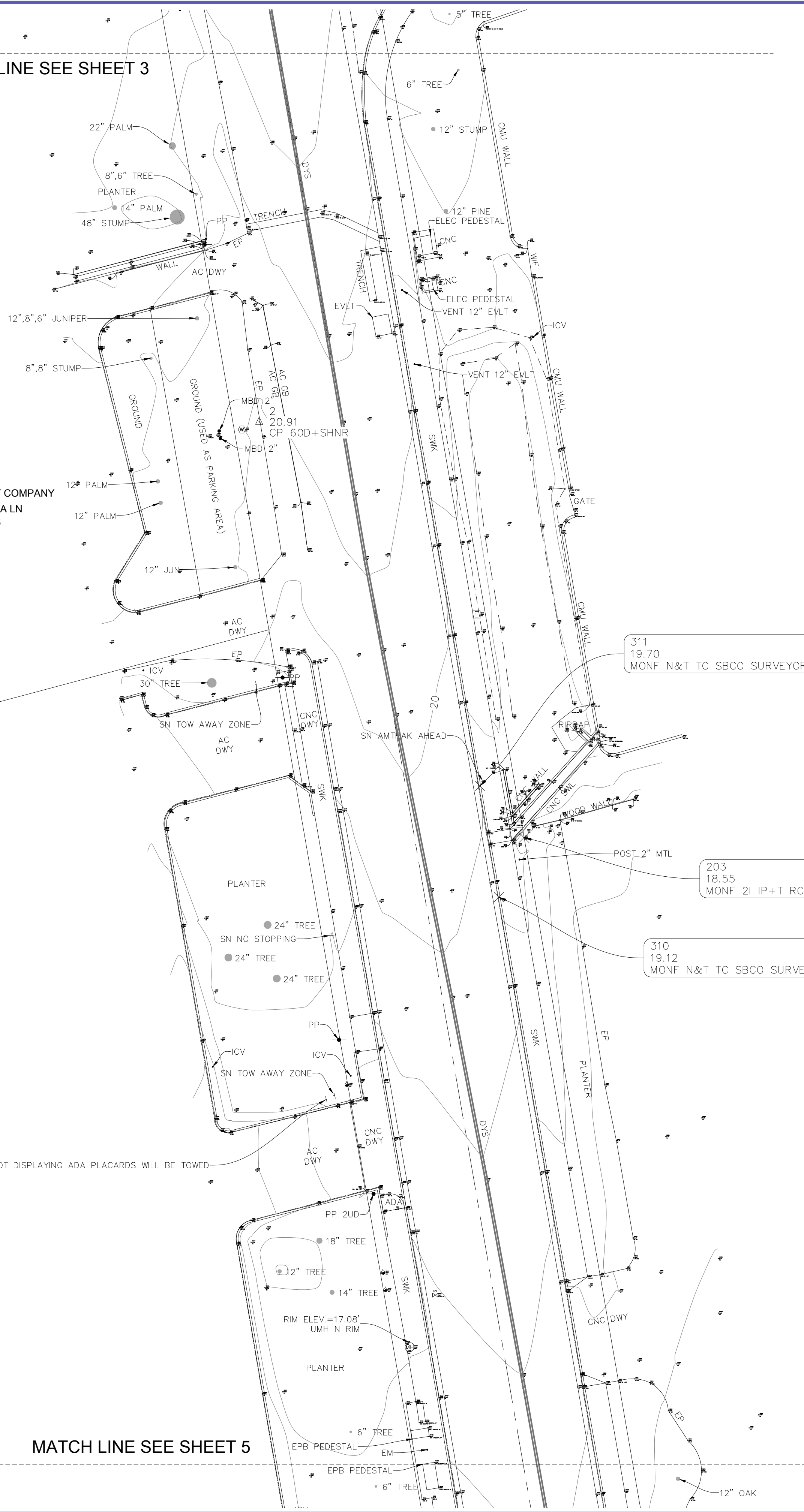
MATCH LINE SEE SHEET 3

OWNER: NEAL FEAY COMPANY
133 S LA PATERA LN
073-050-005

SN VEHICLES NOT DISPLAYING ADA PLACARDS WILL BE TOWED

MATCH LINE SEE SHEET 5

OWNER: CITY OF SANTA BARBARA
6290 HOLLISTER AVE
073-080-041



311
19.70
MONF N&T TC SBCO SURVEYOR

203
18.55
MONF 2I IP+T RCE 7211

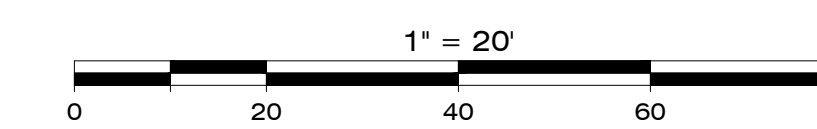
310
19.12
MONF N&T TC SBCO SURVEYOR



201 N. Calle Cesar Chavez, Suite 300,
Santa Barbara, CA 93103
805-692-6921
www.mnsengineers.com

La Patera Ln Combined Topo.dwg * 06/09/2023 * RLS * E-File

LA PATERA TRAIN DEPOT Topographic Base Map



PROJECT NO.
CIGOL.190063.00

SHEET 4
OF 5

OWNER: CITY OF SANTA BARBARA
6290 HOLLISTER AVE
073-080-041

MATCH LINE SEE SHEET 4

OWNER: 6300 HOLLISTER ASSOCIATES, LP
6300 HOLLISTER AVE
073-050-047

ABBREVIATIONS

- | | | | | | |
|--------------------------------|------------------------------------|---|---|---|---------------------------|
| AC = ASPHALT CEMENT | DL = DRIP LINE | GS = GROUND SHOT | P = PILLAR | SWL = SWALE | VALVE = VINEYARD |
| AD = AREA DRAIN | DR = DRIP RADIUS | GT = FENCE GATE | PBF = PLASTIC BOARD FENCE | SWS = SINGLE WHITE STRIPE | VNRD = VINEYARD |
| AT = AERIAL TARGET | DTCH = DITCH | GUY = GUY WIRE (UTILITY POLE) | PED. = PEDESTAL | SYS = SINGLE YELLOW STRIPE | w/ = WITH |
| BBQ = BARBEQUE | DWDS = DOUBLE WHITE DASHED STRIPE | GV = GAS VALVE | PERC = PERCOLATION TEST(S) | TB = TOP AC BERM | WBK = WALL BACK |
| BFR = BACK FLOW REGULATOR | DWS = DASHED WHITE STRIPE | HB = HOSE BIB | LOCATION | TC = TOP OF CURB | WD = WOOD |
| BLDG = BUILDING | DWY = DRIVEWAY | HDC = HEDGE | PHON = EXTERNAL FREE STANDING TELEPHONE | TFMR = TRANSFORMER (ELECTRIC) | WF = WOOD FENCE |
| BLDR = BOULDER | DYDS = DOUBLE YELLOW DASHED STRIPE | HDR = HEADER BOARD | PITT = PITTOSPORUM | TMH = TELEPHONE MAN HOLE | WIF = WROUGHT IRON FENCE |
| BM = BENCH MARK | EMT = ELECTRIC METER | HDRL = HAND RAIL | PP = POWER POLE | TPB = TELEPHONE PULL BOX | WL = WATER LINE PERIMETER |
| BNCH = BENCH | ELEC/ELEV = ELEVATION | HDWL = HEAD WALL | PRCH = PORCH | TRHS = TREE HOUSE | WM = WATER METER |
| BPC = BIRD OF PARADISE CLUSTER | ELEC = ELECTRIC / ELECTRICAL | HVAC = HEATING, VENTILLATION, & AC UNIT | PTO = PATIO | TSB = TRAFFIC SIGNAL BOX | WRF = WIRE FENCE |
| BRDQ = BRIDGE | E.O. = EDGE OF | ICP = IRRIGATION CONTROL PANEL | PTR = PLANTER | TSG = TRAFFIC SIGNAL STANDARD | WTE = WALL TOE |
| BRK = BRICK | EO = ELECTRICAL OUTLET | ICV = IRRIGATION CONTROL VALVE | RBG = RIBBON GUTTER | TVLT = TELEPHONE VAULT | WTP = WALL TOP |
| BWF = BARBED WIRE FENCE | E.P. = EDGE OF PAVEMENT | IP = IRON PIPE | RCP = REINFORCED CONCRETE PIPE | UCO = UTILITY CLEAN OUT | WV = WATER VALVE |
| BXC = BOX CULVERT | EUC = EUCALYPTUS | IPINE = ITALIAN PINE | RD = ROAD | UG = UNDERGROUND | WWF = WOOD & WIRE FENCE |
| CALC = CALCULATED | EVGRN = EVERGREEN | IRR = IRRIGATION | RDWD = REDWOOD | UGC = UNDERGROUND CATV LINE | |
| CAPB = CABLE TV PULL BOX | EVLT = ELECTRIC VAULT | JUN = JUNIPER | RWALL = RETAINING WALL | UGE = UNDERGROUND ELECTRIC LINE | |
| CB = CATCH BASIN | FD = FOUND | LNDRG = LANDING | RFDN = ROOF DRAIN | UGFO = UNDERGROUND FIBER OPTICS LINE | |
| C = COLUMN | FF = FINISHED FLOOR ELEVATION | LSLT = LANDSCAPE LIGHT | RFP = REFLECTOR PADDLE | UGG = UNDERGROUND GAS LINE | |
| CDRN = CURB DRAIN | FH = FIRE HYDRANT | LSTD = LIGHT STANDARD | ROH = ROOF OVERHANG | UGRW = UNDERGROUND RECLAIMED WATER LINE | |
| CHLF = CHAIN LINK FENCE | FL = FLOW LINE | LT = LIGHT (MISCELLANEOUS) | RPRP = RIP RAP | UGS = UNDERGROUND SEWER LINE | |
| CHMY = CHIMNEY | FTN = FOUNTAIN | M = MEASURED | RR = RAILROAD | UGT = UNDERGROUND TELEPHONE LINE | |
| CIF = CAST IRON FENCE | GB = GRADE BREAK | M.PINE = MONTEREY PINE | SCO = SEWER CLEANOUT | UGU = UNDETERMINED UNDERGROUND UTILITY LINE | |
| CL = ROAD CENTER LINE | GL = GUTTER LIP | MAG = MAGNETIC | SCT = SAWCUT LINE | UMH = UNDETERMINED UTILITY MANHOLE | |
| CLSTR = CLUSTER | GMH = GAS UTILITY MANHOLE | MBD = METAL BOLLARD | SD = STORM DRAIN | UMT = UNDETERMINED UTILITY METER | |
| CMH = CABLE TV MANHOLE | GMT = GAS METER | MGR = METAL BEAM GUARD RAIL | SDMH = STORM DRAIN MANHOLE | UPB = UNDETERMINED UTILITY PULL BOX | |
| CNC/CONC = CONCRETE | GRG = GARAGE | MIBX = METAL BEAM GUARD RAIL | SMH = SEWER MAN HOLE | UVLT = UNDETERMINED UTILITY VAULT | |
| CONIF = CONIFER | GRHS = GREEN HOUSE | MBX = MAILBOX | SN = SIGN | UVLV = UNDETERMINED UTILITY VAULT | |
| CP = CONTROL POINT | GRV = GRAVEL | MIM = MIMOSA | SPK = SPRINKLER | | |
| CPP = CORRUGATED PLASTIC PIPE | | MON = MONUMENT | SRF = SPLIT RAIL FENCE | | |
| CSTP = CURB STOP | | MRK = SURVEY MARKERS (HUB, LATH, ETC.) | SS = SANITARY SEWER | | |
| CVLT = CABLE TV VAULT | | N.I.PINE = NORFOLK ISLAND PINE | SSMH = SANITARY SEWER MANHOLE | | |
| CYP = CYPRESS | | NSRK = NEWS RACK | STN = STONE, BOULDER | | |
| DBL = DOUBLE (ie: TREE TRUNK) | | OHV = OVERHEAD UTILITY WIRE(S) | SWK = SIDEWALK | | |
| DEC = DECIDUOUS | | | | | |
| DI = DROP INLET | | | | | |

BLOCK & LINETYPE LEGEND

- | | | | |
|---|-------------------------|-----|----------------------|
| ☐ | DRAIN INLET | ⊗ | WATER METER |
| ☼ | LIGHT STANDARD | ⊗ | CLEAN OUT |
| + | SIGN | ⊗ | GAS METER |
| ⊗ | SANITARY SEWER MANHOLE | ⊗ | GAS VALVE |
| ⊗ | STORM DRAIN MANHOLE | ⊗ | FIRE HYDRANT |
| ⊗ | GENERIC MANHOLE | ⊗ | WATER VALVE |
| ⊗ | COMMUNICATIONS MANHOLE | ⊗ | POST INDICATOR VALVE |
| ⊗ | TELEPHONE MANHOLE | --- | BOUNDARY LINE |
| ⊗ | ELECTRIC MANHOLE | --- | CENTER LINE |
| ⊗ | GUY WIRE | --- | EASEMENT LINE |
| ⊗ | POWER POLE | --- | FENCE LINE |
| ⊗ | TRAFFIC SIGNAL STANDARD | --- | FLOW LINE |

Basis of Bearings & Measurements
The bearing of North 09°50'05" West was used between found monuments along the east line of La Patera Lane as shown on Parcel Map No. 20,608 recorded in Book 54, pages 63-69 per Santa Barbara County Records. The measured distances for the project are ground distances.

Basis of Elevations:
Elevations are based on the NGS found monument EW3777 recorded on the Airport Survey Control Network per Santa Barbara County Records, Book 170, Pages 63-54 on the NAVD88 datum.
DESIGNATION EW3777, ELEV. = 15.80' (Point 371)

Point	Northing	Easting	Elev.	Description
1	1985042.71	6006499.53	13.64	CP SCRIBE X SWK
2	1985548.94	6006365.68	20.91	CP 60D NL+SHNR
3	1986156.29	6006309.33	31.37	CP SCRIBE X SWK
4	1986559.78	6006227.68	36.34	CP MAG NL
5	1986801.98	6006179.81	32.14	CP SCRIBE X CNC
6	1986561.43	6006074.20	36.85	CP MAG NL SBS AP
7	1986516.70	6005816.25	33.46	CP 8 MAG AC
8	1986600.71	6005735.73	32.13	CP SCRIBE X CNC
9	1986565.43	6005904.14	35.60	CP MAG NLAC
10	1986760.34	6005914.70	34.20	CP MAG NLAC
11	1986675.69	6006109.22	35.13	CP MAG NL+FLAG
20	1984891.57	6006471.80	10.07	CP 60D NL+WHSKR
21	1985173.97	6006432.78	15.00	CP SCRIBE X SWK
22	1985757.16	6006373.72	25.31	CP SCRIBE X SWK
23	1985999.44	6006290.03	29.34	CP SCRIBE X TC
201	1984925.24	6006527.31	13.74	MONF 3/4IP+TAG
202	1985039.48	6006507.53	13.64	MONF N+T LS7911
203	1985433.42	6006439.19	18.55	MONF 2I IP+T RCE 7211
204	1986076.32	6006327.76	29.97	MONF 2I IP+TAG RCE 7211
310	1985416.86	6006432.23	19.12	MONF N&T TC SBCO SURVEYOR
311	1985447.77	6006426.93	19.71	MONF N&T TC SBCO SURVEYOR
371	1985187.20	6007950.80	15.80	MONF 3.5IBC EW3777

201 N. Calle Cesar Chavez, Suite 300,
Santa Barbara, CA 93103
805-692-6921
www.mnsengineers.com

La Patera Ln Combined Topo.dwg * 06/09/2023 * RLS * E-File

OWNER: CITY OF SANTA BARBARA
SB ARPT/100 ADAMS
073-450-003

June 2023

City of Goleta
Public Works Dept.

LA PATERA TRAIN DEPOT
Topographic Base Map

PROJECT NO.
CIGOL.190063.00

SHEET 5
OF 5

1" = 20'

Signature, PLS No.