

# | SB 1383 - The Basics

Senate Bill 1383, or SB 1383, is the newest solid waste law to affect residents, businesses, schools, non-profits, and government agencies. SB 1383 states that, in California, organic material can no longer be buried in landfills. When buried, organic waste creates methane, a powerful greenhouse gas and major contributor to climate change. SB 1383 will help us reduce methane production and combat climate change.

Your local government agencies created this packet to outline the responsibilities of public schools and public charter schools under this new law. In essence, public schools, also known as "Local Education Agencies" in SB 1383, are required to:

- **Recycle organic materials, such as food scraps, yard waste, and food-soiled paper products**
- **Donate surplus edible food**
- **Provide sufficient waste containers in all areas where waste is generated**
- **Use signage and color code public waste bins**
- **Educate students and staff on proper organic waste recycling and prevention**
- **Perform periodic inspections of organic waste containers for contamination**

This packet was designed to be a general guide to SB 1383 and organic waste programs in Santa Barbara County.

This packet is intended for school administrators, and should be shared widely with staff. SB 1383 impacts school administrators, staff, and students.

Local jurisdictions have been working hard to develop organic waste programs to make compliance easy. We are here to help you meet California state requirements and goals, and are excited to move our region toward a more environmentally progressive and sustainable place to live and work.

**SB 1383 is enforced by CalRecycle, the state agency that oversees the state's waste management, recycling, and waste reduction programs.**

**CalRecycle and your local government office can help with SB 1383 questions; contacts are listed near the end of this document.**

# Solid Waste Laws and Regulations for California Schools

*For Schools Located in the Cities of Buellton, Goleta, Santa Barbara, and Solvang, and the Unincorporated South Coast of Santa Barbara County*



*Created by Santa Barbara County Public Works Resource Recovery and Waste Management Division in partnership with local cities.*

To Santa Barbara County's Local School Districts,

Starting in January 2022, solid waste management is changing in California. Organic material, like food scraps, yard waste, and food-soiled paper products, can no longer be buried in landfills. Instead, Californians must recycle their organic waste, and some entities will be required to donate edible food that would otherwise be disposed of. This law is known as Senate Bill 1383, or SB 1383.

Organic waste is emphasized in this effort because organic materials, such as those described above, take up valuable landfill space when they could be recycled into compost or mulch instead. Additionally, organic materials create methane when buried in the landfill. Methane is a powerful greenhouse gas and major contributor to climate change. Diverting organic waste is one of the most effective ways to save landfill space, reduce emissions, and build a sustainable future.

Residents, businesses, local and state government, schools and other entities are all impacted by SB 1383. Santa Barbara County offers various programs to help these organizations meet the requirements and bring positive environmental practices into their operations.

The County's Resource Recovery and Waste Management Division (RRWMD) created this guidebook in partnership with local cities to help our public schools understand the many components of SB 1383 and the other applicable solid waste laws and requirements.

RRWMD is excited to present our existing waste recovery programs to schools. This guidebook includes all of the information to get started.

Sincerely,

Your Local Municipal  
Solid Waste Staff

---



# Table of Contents

## Rules and Regulations

Mandatory Laws .....	1
SB 1383 for Schools .....	2

## Organic Waste and Collection

Organic Waste Recycling .....	3
Source Separated Organics Collection .....	4
The ReSource Center .....	5
Food Recovery .....	6
Containers .....	7
Education .....	8

## Resources

Waivers .....	9
CalRecycle Enforcement .....	10
CalRecycle Resources .....	11
Local Programs for Schools .....	12
Local Government Contacts .....	13
Specific School Facility Jurisdiction Reference Guide .....	14

Please note that this guidebook was created for schools that are serviced by the ReSource Center, Santa Barbara County's newest solid waste facility. Schools serviced by the ReSource Center include those in the Cities of Buellton, Goleta, Santa Barbara, and Solvang, as well as the unincorporated areas of the Santa Ynez Valley and South Coast of Santa Barbara County, including the areas of Isla Vista, Los Olivos, Montecito, and Santa Ynez.



# Mandatory Laws

Schools are required to comply with various solid waste and recycling laws. Laws that have previously gone into effect are briefly explained below.

## **AB 341 - Mandatory Commercial Recycling**

Effective on July 1, 2012, the Mandatory Commercial Recycling law requires public entities generating four cubic yards or more of solid waste per week to have a blue bin recycling program in place. Further, per Santa Barbara County Ordinance, all businesses are required to divert recyclable materials (plastic, paper, cardboard, glass and metals) from the landfill. Exemptions may be granted if the program is infeasible or creates an unreasonable hardship.

## **AB 1826 - Mandatory Commercial Organics Recycling**

Effective on January 1, 2016, Mandatory Organics Recycling (MORE) requires regulated entities to implement an organic waste recycling program to divert food waste, green waste, landscape and pruning waste, nonhazardous wood waste, and food-soiled paper waste from landfill disposal. Threshold requirements for businesses have been phased in over time. As of September 2020, businesses that generate two cubic yards or more of solid waste per week must recycle their organic waste. Note, the requirements of AB 1826 have been largely eclipsed by the broader requirements of SB 1383.

## **AB 827 - Recycling Containers**

Effective on July 1, 2020, AB 827 supports AB 341 and AB 1826 covered generators by making recycling and organic recycling containers available to customers. Wherever recycling or organic waste is generated, a school must provide an appropriate container adjacent to the solid waste container to capture and divert recycling and organic waste. Containers must be easily accessible, visible, and clearly labeled.

**Learn more at [www.calrecycle.ca.gov/recycle/schools/laws](http://www.calrecycle.ca.gov/recycle/schools/laws).**

# Senate Bill 1383 for Schools

SB 1383 is the newest solid waste law to affect residents, businesses, schools, non-profits, and government agencies.

**SB 1383 builds upon previous solid waste laws by expanding the definition of organic waste to include food, landscape and pruning waste, paper products, organic textiles and carpets, lumber, and wood.**

SB 1383 applies to all local education agencies, including:

**K-12 Public Schools**

**Charter Schools**

**School Districts**

**County Offices of Education**

Private schools are considered commercial businesses under SB 1383 and have different requirements.

Public schools, also known as "**Local Education Agencies**" in SB 1383, are required to:

- **Recycle organic materials, such as food scraps, yard waste, and food-soiled paper products**
- **Donate surplus edible food**
- **Provide sufficient waste containers in all areas where waste is generated**
- **Have signage on public waste bins**
- **Color code public waste bins**
- **Educate students and staff on proper organic waste recycling and prevention**
- **Perform periodic inspections of organic waste containers for contamination**

**SB 1383 was created and is enforced by CalRecycle, a California agency responsible for solid waste management. Local government offices are here to help you meet CalRecycle's goals and requirements.**



# SB 1383 for Schools - Organic Waste and Recycling

Local education agencies must recycle their organic waste either by:

- Subscribing to a collection service that the jurisdiction provides OR
- Contracting for collection services independently OR
- Self-hauling organic waste to a specified composting facility, community composting program, or other collection activity or program. Self-haulers must maintain records.

Luckily, the Cities of Buellton, Goleta, Santa Barbara and Solvang and the unincorporated areas of Santa Barbara County's Santa Ynez Valley and South Coast are serviced by the ReSource Center. The ReSource Center is a state-of-the-art facility where organic waste is sorted and recovered from the trash stream, and then transformed into compost on-site.

**Most schools in this service area are already compliant with the organic waste recycling requirements of SB 1383, and starting separate food scraps collection may not be required. Please see page 5 for more information on the ReSource Center.**

## The Basics of Organic Waste Collection in Central & Southern Santa Barbara County

- The ReSource Center wasteshed is serviced by the waste haulers **MarBorg Industries** and **Waste Management**.
- Contents of the trash bin are sent to the ReSource Center to be sorted. Once sorted, waste is either recycled, composted, or landfilled.
- Yard waste collected in green bins, like plant trimmings and grass, is also considered organic waste. Yard waste is hauled to the ReSource Center and Transfer Stations where it is processed into mulch. This mulch is available to the community.





# SB 1383 for Schools - Source Separated Organics Collection

Your local jurisdiction and waste haulers have services you can tap into to start source separated programs and collection at your school.

## How Organics Collection Works:

- Designated containers are made available in areas where organic waste is generated, like cafeterias, kitchens, and outdoor eating areas.
- These containers, once full, are then transferred to an outdoor collection cart or bin, just like other waste.
- Classroom containers should reflect the type of collection service the local education agency has. If organic waste is not produced in the classroom, organic waste bins are not required in the classroom.
- Organic waste containers are not required for restrooms.

## Benefits of Organics Collection:

- Organic waste service is often cheaper than trash service. Some entities can save money by reducing their trash service and increasing their organics service.
- Students are educated on how to sort their waste and why it matters.
- Diverting organic waste saves landfill space, reduces the generation of methane, and can help slow climate change.



## How To Set Up Organic Waste Service:

- Contact your jurisdiction or waste hauler to set up service.
- Use the bins. Teach students and staff on what can go into the bins and where they are located.
- Take note of issues and let us know about your specific problems.
- Dirty bins? Each year, outdoor carts are allowed to be swapped out for fresh and clean ones! Contact your waste hauler or the jurisdiction to make this request.

**Call your waste hauler to learn more about organic waste services offered in your jurisdiction.**

# The ReSource Center

ORGANIC WASTE RECYCLING IS HAPPENING HERE AND NOW!



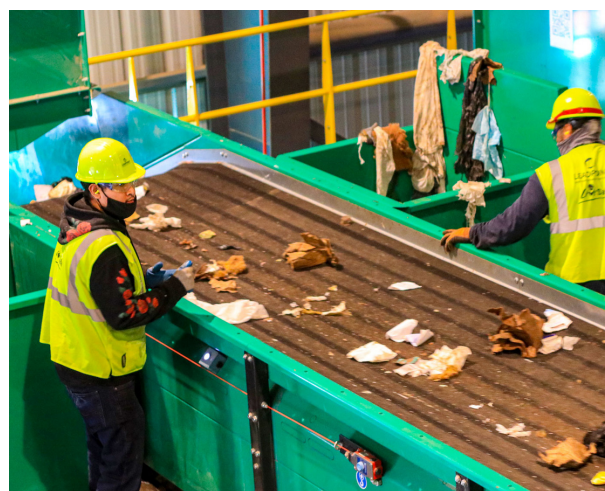
The Santa Barbara County Public Work's ReSource Center converts commercial and residential waste into resources by recovering recyclable materials, transforming organic waste into compost, and creating renewable energy in the process. With this new technology, organic waste that is placed in the trash is sorted out of the waste stream and then composted on-site.

**Because of the ReSource Center, many schools, businesses, and residents are already compliant with SB 1383's organic waste requirements.**

## The ReSource Center benefits the community by:

- Reduction of Waste - the Center will divert an additional 60% of waste from the landfill
- Reduction of Greenhouse Gas (GHG) Emissions - the Center will annually remove emissions equivalent to those generated by 28,668 cars
- Generation of Renewable Energy - the Center will produce enough energy to power 3,000 local homes annually
- Improved Air Quality - the Center will capture methane gas and generate electricity with clean-burning gas engines
- Creation of Jobs - the Center will create 100 permanent living wage jobs
- Fulfillment of State Mandates - the Center is vital to achieving state-mandated reductions in GHG emissions and increased diversion of organic waste and recyclables

Learn more about the ReSource Center, tours, and the innovative technology used to sort waste at:  
[www.LessisMore.org/ReResourceCenter](http://www.LessisMore.org/ReResourceCenter)



# SB 1383 for Schools - Food Recovery

SB 1383 states that schools must donate surplus food to food recovery organizations. Schools must have an edible food recovery program in place by **January 1, 2024**.

There are two main requirements for edible food donors:

## 1. Establishing Written Agreements with Food Recovery Organizations:

The regulations require mandated food donors to donate the maximum amount of their edible food that would otherwise be disposed of. To ensure that the maximum amount of edible food is recovered, the regulations require that mandated food donors establish contracts or written agreements with food recovery organizations and services. Templates are available from local jurisdictions.

You may not have any food going to waste on a daily basis. Look at the written agreement as a "contingency plan" for when you have food that cannot be used, like right before summer break. We also encourage you to utilize leftovers and give food to staff before donating. Think of creative ways to reduce food waste and eliminate food waste from the start.

## 2. Recordkeeping

The law requires mandated food donors to maintain the following records:

- Copies of written agreement(s)
- Schedule for food donation deliveries or collections
- Quantity of food donated in pounds per month
- Types of food that is donated



## Next Steps in Developing a Food Recovery Program

- Analyze your waste. What type of food is it? Hot food, produce or pantry items? Can you think of ways to reduce your waste before donating?
- Look for organizations who may be interested in receiving your donations. We can help with this.
- Contact that group and agree on a donation plan.
- Create a written agreement and keep records as required by SB 1383.



# Containers

SB 1383 has certain requirements for bin colors and signage to help individuals dispose of their waste correctly. Signage should reflect local waste collection services.

## Containers

School staff and administrators must provide containers to collect recyclables (paper, cardboard, aluminum, glass, hard plastics) in all areas where trash containers are located, except in restrooms. However, a school is not required to provide a collection container if a specific waste type is not generated in a particular area (e.g. if recyclables are not produced in the cafeteria, no recycle bin is needed).

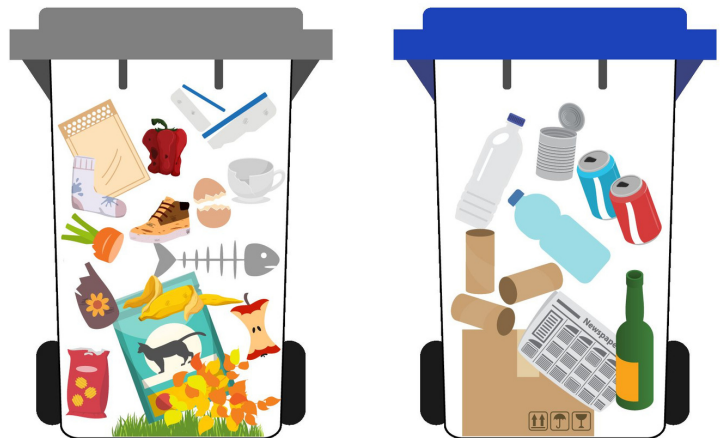
Your school is located in the ReSource Center service area, meaning that the trash generated at your school is being sorted and organic waste in the trash is captured and composted instead. Because your school's trash goes to the ReSource Center, you do not need to provide containers for the collection of organic waste in all areas where trash containers are located.

- Containers must conform to SB 1383's requirements. Container requirements may be different depending on your waste services.
- Trash containers must be gray and recycling containers must be blue.
- Schools can keep their current bins until 2036. However, new containers purchased must be compliant with the new color requirements.

### Signage

All student facing waste containers should have signage showing what can and cannot go into the specified container.

Free signage is available from local jurisdictions and CalRecycle.





# Education

SB 1383 also requires school staff to educate students and employees on proper organic waste recycling and prevention.

Staff and administrators must:

- Instruct employees on how to properly sort material into the correct containers.
- Periodically inspect organic waste containers for contamination.
- Inform employees if containers are found to be contaminated.

Examples of school education may include:

- Assemblies
- Posters and signage
- Waste reduction curriculum
- Field trips

The local non-profit organization, Explore Ecology offers waste reduction lessons to schools to educate students on what happens with waste in our community, how to responsibly handle their waste, and why it's important. In most cases, these lessons are provided to schools and teachers **for free!**

For schools located within the County, in addition to offering waste reduction programming, Explore Ecology can also support schools by holding assemblies to help students understand how to properly sort their waste. Explore Ecology can also guide student action projects supporting motivated students with a waste reduction action project of their choosing.

**Explore Ecology**  
**(805) 884-0459 x2**  
**education@explorecology.org**  
**www.explorecology.org**



# Waivers for Schools



On behalf of your school you may apply to CalRecycle for a waiver from some or all of the organic waste collection service requirements. Local government offices cannot complete the waiver on your behalf. Note, waivers only apply to organics recycling requirements, a school cannot be waived from food recovery requirements under the law unless it does not have an on-site food facility. To qualify for a waiver, one of the following criteria must apply:

- A hauler, licensed architect, or licensed engineer has determined that there is not adequate space for separate organic waste collection containers.
  - CalRecycle may conduct a site visit to better understand the space limitations and determine if a waiver is appropriate.
- The school's total solid waste is two cubic yards or more serviced per week, and organic waste produced weekly comprises less than 20 gallons.
- The school's total solid waste is less than two cubic yards serviced per week, and organic waste produced weekly comprises less than 10 gallons.
- Your school is located within a jurisdiction or census tract that has been granted a low – population, rural exemption or elevation waiver.
  - **Note, you must still apply for a waiver even if you're located in a jurisdiction that has already been granted a waiver.**

**Waiver Forms are available on the CalRecycle Website at  
<https://www.calrecycle.ca.gov/organics/slcp/waivers>**

# CalRecycle Enforcement

CalRecycle is responsible for the enforcement of SB 1383 compliance for local education agencies.

CalRecycle staff will be conducting compliance evaluations for local education agencies. Local government staff will be completing inspections for the food recovery requirements of SB 1383.

Local education agencies must comply with the organic waste recycling mandates in SB 1383, and all local education agencies with an on-site food facility are considered Tier Two edible food generators and must recover edible food starting January 1, 2024. Reporting requirements are limited, but include the following:

- If a local education agency is a commercial edible food generator, they are required to keep records (and make them available to CalRecycle upon request) but not report to CalRecycle. Local jurisdictions may have additional reporting requirements, check with your local jurisdiction to verify.
- Local education agencies must keep records for five years if they self-haul organic material.
- Local education agencies are not required to keep records or report on their organic waste collection program under the regulations, but a hauler or jurisdiction may conduct tasks on behalf of the local education agencies.

If CalRecycle determines that a local education agency is not in compliance with the requirements of SB 1383, they may issue a Notice of Violation requiring compliance within 90 days. CalRecycle can grant a 90-day extension (for a total of 180 days) if CalRecycle finds additional time is necessary for the local education agency to comply. Failure to comply will result in CalRecycle listing the school in question on the Organic Waste Recovery Noncompliance Inventory.



If you have questions on behalf of your school or district on how to comply with SB 1383, you may contact CalRecycle by sending an email to [slcp.organics@calrecycle.ca.gov](mailto:slcp.organics@calrecycle.ca.gov).

# CalRecycle Resources

SB 1383 information for Local Education Agencies can be found online at:

<https://www.calrecycle.ca.gov/organics/slcp/schools>

**Information on specific SB 1383 topics can be found at the following websites:**

- Organic Waste Diversion:

<https://www.calrecycle.ca.gov/organics/slcp/collection>

- Food Recovery:

<https://www.calrecycle.ca.gov/Organics/SLCP/FoodRecovery>

- Model School Programs:

<https://www.calrecycle.ca.gov/recycle/schools/models>

- Solid Waste in School Cafeterias:

<https://www.calrecycle.ca.gov/recycle/schools/food>

- SB 1383 Education and Outreach Resources:

<https://www.calrecycle.ca.gov/Organics/slcp/education>

- School Waste Reduction Programs:

<https://www.calrecycle.ca.gov/recycle/schools>

- School Waste Reduction Laws:

<https://www.calrecycle.ca.gov/recycle/schools/laws>

- SB 1383 March 2022 Webinar Hosted by NCRA and CalRecycle:

[https://www.youtube.com/watch?v=WUUKQt4\\_MGc](https://www.youtube.com/watch?v=WUUKQt4_MGc)

If you have questions on behalf of your school or district on how to comply with SB 1383, you may contact CalRecycle by sending an email to [slcp.organics@calrecycle.ca.gov](mailto:slcp.organics@calrecycle.ca.gov).



# Local Programs for Schools

Santa Barbara County and our local cities offer many opportunities for teachers, students, and school administrators. These programs are dependent on each school's specific jurisdiction. Please see the jurisdictional reference guide on page 12 to confirm each school's jurisdiction.

Schools in the ReSource Center Wasteshed can participate in the following activities:

- **Explore Ecology** - Explore Ecology offers educational lessons and assemblies for students and teachers. Educators provide immersive solid waste lessons to teach students about topics like waste reduction, food waste, and composting, as well as help explain the innovative ways we handle waste in Santa Barbara County.
- **ReSource Center Experiences** - Schools can schedule a field trip to the ReSource Center where students can see first-hand how local waste is processed. Tours are one of the best ways to get students engaged in local sustainability practices. Field trips may also be booked in conjunction with the Explore Ecology waste lesson series.
- **Recycling and Transfer Station Tours** - Schools can also visit Santa Barbara County's South Coast Recycling and Transfer Station. Students and teachers can see the first step in processing waste and can learn how odd items like mattresses and construction debris get recycled.
- **MarBorg Vehicle Tours** - Let students get an up-close look at waste management equipment. Contact MarBorg at: <https://www.marborg.com>. Please note this is only available to schools serviced by MarBorg.

For more resources like signage, informational guidebooks and free recycling and compost bins contact your local jurisdiction. Jurisdiction contacts are listed on page 13.



# Local Government Contacts

## County of Santa Barbara

Mackie Forgey  
(805) 882-3613  
mforgey@countyofsb.org

---

Kaitlyn Haberlin  
(805) 882-3603  
khaberlin@countyofsb.org

## City of Goleta

Dan Rowell  
(805) 961-7575  
drowell@cityofgoleta.org

## City of Santa Barbara

Hillary Allen  
(805) 564-5627  
hallen@santabarbaraca.gov

## City of Buellton

Rose Hess  
(805) 686-0137  
roseh@cityofbuellton.com

## City of Guadalupe

Shannon Sweeney  
(805) 356-3910  
ssweeney@ci.guadalupe.ca.us

## City of Santa Maria

Maia Hoffman  
(805) 925-0951  
mhoffman@cityofsantamaria.org

## City of Carpinteria

Erin Maker  
erinm@ci.carpinteria.ca.us

## City of Lompoc

Diana Hernandez  
(805) 875-8025  
d\_hernandez@ci.lompoc.ca.us

## City of Solvang

David Packard  
(805) 688-5575  
dpackard@cityofsolvang.com

---

Thalia Amador  
(805) 875-8027  
t\_amador@ci.lompoc.ca.us



# Specific School Facility Jurisdiction Reference Guide

Please see the more detailed list below of specific schools and their respective jurisdiction. Local government contacts are listed on Page 11. Please note that private schools are considered commercial businesses under SB 1383, and are not included in this list.

\* Indicates this school is a charter school

## **Ballard School District**

- Ballard Elementary School – County

## **Blochman Union School District**

- Benjamin Foxen Elementary School – County
- Family Partnership Charter School, Santa Maria Montessori\* – County
- Family Partnership Charter School, Orcutt Middle School\* – County
- Family Partnership Charter School, Orcutt High School\* – County
- Family Partnership Charter School, Solvang\* – City of Solvang
- Trivium Charter School, Santa Barbara Learning Center\* – County
- Trivium Charter School, Lompoc Learning Center\* – City of Lompoc
- Trivium Charter School, Santa Maria Learning Center\* – City of Santa Maria

## **Buellton Union School District**

- Oak Valley Elementary School – City of Buellton
- Jonata Middle School – City of Buellton

## **Carpinteria Unified School District**

- Aliso Elementary School – City of Carpinteria
- Canalino Elementary School – City of Carpinteria
- Carpinteria Family School – City of Carpinteria
- Carpinteria High School – City of Carpinteria
- Carpinteria Middle School – City of Carpinteria
- Summerland Elementary School – County



# Specific School Facility Jurisdiction Reference Guide

## **Cold Spring School District**

- Cold Spring Elementary School – County

## **College School District**

- College Elementary School – County
- Santa Ynez Elementary School – County
- Santa Ynez Valley Charter School\* – County

## **Cuyama Joint Unified**

- Cuyama Elementary School – County
- Cuyama Valley High School – County
- California Connections Academy, Central Coast\* – County

## **Goleta Union School District**

- Brandon Elementary School – City of Goleta
- El Camino Elementary School – County
- Ellwood Elementary School – City of Goleta
- Foothill Elementary School – County
- Goleta Family School (operated on Foothill Elementary campus) – City of Goleta
- Hollister Elementary School – County
- Isla Vista Elementary School – County
- Kellogg Elementary School – City of Goleta
- La Patera Elementary School – City of Goleta
- Mountain View Elementary School – County

## **Guadalupe Union School District**

- Mary Buren Elementary School – City of Guadalupe
- Kermit McKenzie Intermediate School – City of Guadalupe

# Specific School Facility Jurisdiction Reference Guide

## Hope Elementary School District

- Hope Elementary School – City of Santa Barbara
- Monte Vista Elementary School – City of Santa Barbara
- Vieja Valley Elementary School – County

## Lompoc Unified School District

- Adult School and Career Center – City of Lompoc
- Bob Forniash Community Day School – City of Lompoc
- Buena Vista Elementary School – County
- Cabrillo High School – County
- Clarence Ruth Elementary School – City of Lompoc
- Crestview Elementary School – Vandenberg Space Force Base
- Fillmore Elementary School – City of Lompoc
- Hapgood Elementary School – City of Lompoc
- La Canada Elementary School – City of Lompoc
- La Honda STEM Academy – City of Lompoc
- Lompoc High School – City of Lompoc
- Lompoc Valley Middle School – City of Lompoc
- Los Berros Visual and Performing Arts Academy – County
- Manzanita Charter School\* – Vandenberg Space Force Base
- Maple High School – County
- Miguelito Elementary School – City of Lompoc
- Mission Valley School – City of Lompoc
- Vandenburg Middle School – Vandenberg Space Force Base

## Los Olivos School District

- Los Olivos Elementary School – County

## Montecito Union School District

- Montecito Union Elementary School – County

# Specific School Facility Jurisdiction Reference Guide

## **Orcutt Union School District**

- Alice Shaw Elementary School – County
- Early Learning Center – County
- Joe Nightingale Elementary School – County
- Lakeview Junior High School – County
- Olga Reed School – County
- Orcutt Junior High School – County
- Orcutt Academy K-8 Charter School\* – County
- Orcutt Academy Charter High School\* – County
- Patterson Road Elementary – County
- Pine Grove Elementary – County
- Ralph Dunlap Elementary School – County

## **Santa Barbara Unified**

- Adams Elementary School – City of Santa Barbara
- Monroe Elementary School – City of Santa Barbara
- Adelante Charter School\* – City of Santa Barbara
- Peabody Charter School\* – City of Santa Barbara
- Cleveland Elementary School – City of Santa Barbara
- Roosevelt Elementary School – City of Santa Barbara
- Franklin Elementary School – City of Santa Barbara
- Santa Barbara Charter School\* – City of Goleta
- Harding University Partnership School – City of Santa Barbara
- Santa Barbara Community Academy – City of Santa Barbara
- McKinley Elementary School – City of Santa Barbara
- Washington Elementary School – City of Santa Barbara
- Goleta Valley Junior High School – City of Goleta
- La Cumbre Junior High School – City of Santa Barbara
- La Colina Junior High School – City of Santa Barbara

# Specific School Facility Jurisdiction Reference Guide

## **Santa Barbara Unified (continued)**

- Santa Barbara Junior High School – City of Santa Barbara
- Alta Vista Alternative High School – City of Santa Barbara
- San Marcos High School – County
- Dos Pueblos High School – City of Goleta
- Santa Barbara High School – City of Santa Barbara
- La Cuesta Continuation High School – City of Santa Barbara

## **Santa Maria-Bonita School District**

- William Laird Adam Elementary School – City of Santa Maria
- Alvin Elementary School – City of Santa Maria
- Arellanes Elementary School – County
- Arellanes Junior High School – County
- George Washington Battles Elementary – City of Santa Maria
- Bill Libbon Elementary – City of Santa Maria
- Bonita Elementary School – County
- Robert Bruce Elementary School – City of Santa Maria
- El Camino Junior High School – City of Santa Maria
- Fairlawn Elementary School – City of Santa Maria
- Isaac Fesler Junior High – City of Santa Maria
- Roberto and Dr. Francisco Jiménez Elementary – City of Santa Maria
- Tommie Kunst Junior High – City of Santa Maria
- Liberty Elementary School – City of Santa Maria
- Isaac Miller Elementary School – City of Santa Maria
- Calvin C Oakley Elementary – City of Santa Maria
- Juan Pacifico Ontiveros Elementary – City of Santa Maria
- William Rice Elementary – City of Santa Maria
- David J Sanchez Sr. Elementary – City of Santa Maria
- Ida Redmond Taylor Elementary – City of Santa Maria
- Martin Luther Tunnell Elementary – City of Santa Maria

# Specific School Facility Jurisdiction Reference Guide

## **Santa Maria Joint Union High School District**

- Delta High School – County
- Ernest Righetti High School – County
- Mark Richardson Career Technical Education Center & Agricultural Farm - County
- Pioneer Valley High School – City of Santa Maria
- Santa Maria High School – City of Santa Maria

## **Santa Ynez Valley Union High School District**

- Santa Ynez High School – County
- Refugio High School – County

## **Solvang School District**

- Solvang School – City of Solvang

## **State Board of Education**

- Olive Grove Charter School Buellton – City of Buellton
- Olive Grove Charter School Lompoc – City of Lompoc
- Olive Grove Charter School Orcutt/Santa Maria – County
- Olive Grove Charter School Santa Barbara – City of Santa Barbara

## **Vista Del Mar Union School District**

- Vista de las Cruces School – County