



Agenda Item C.2
DISCUSSION/ACTION ITEM
Meeting Date: April 7, 2009

TO: Mayor and Councilmembers

FROM: Dan Singer, City Manager

CONTACT: Steve Wagner, Community Services Director
Marti Schultz, Principal Civil Engineer

SUBJECT: Resolution Establishing Additional Restricted Parking Zones on Brandon Drive

RECOMMENDATION:

Adopt Resolution No. 09 - ____ entitled "A Resolution of the City Council of the City of Goleta, California Rescinding Resolution No 09-17 and Designating Additional No Parking "Red" Curb Markings on Brandon Drive."

BACKGROUND:

On March 17, 2009, staff presented this item to City Council. Due to an error in the public posting and noticing of this item, staff is returning to Council for further consideration. The public posting and noticing stated an inconsistent time for the item to heard. A member of the public attended the meeting at the posted time, but the item had already been heard. The City Council then directed staff to return to Council after reposting and re-noticing to the public had occurred. For informational purposes, the March 17, 2009 report is provided as Attachment 1 to this report.

Council also had questions regarding the amount of Metropolitan Transit District (MTD) Bus stops in the area of Brandon School. Staff has been in contact with MTD and further discussions will be taking place in the near future to review the number and locations of bus stops along this portion of Brandon Drive.

DISCUSSION:

Staff recommends the installation of the proposed new restricted parking zones as they assist in addressing circulation and safety issues in and around Brandon School. Staff recommends the proposed parking restrictions be in effect seven days a week, 24 hours a day.

Although the City Council adopted Resolution No. 09-17 at the Council meeting on March 17, 2009, staff is recommending that Council rescind Resolution No. 09-17 and

adopt Resolution No 09-___. This will afford full opportunity for the City Council to reconsider this item after receiving additional public input. Staff is recommending a new resolution be adopted that more clearly identifies the locations of the red curbing by north, east, south and west directions (i.e., west side of Brandon Drive).

ALTERNATIVES:

Council may elect to not adopt a new resolution that rescinds Resolution No. 09-17 and designates additional parking red curb markings on Brandon Drive in the vicinity of Brandon School.

FISCAL IMPACTS:

The fiscal impact associated with the establishment of the proposed restricted parking is approximately \$500 for the installation of red curb signs and paint on Brandon Drive and \$150 per year per site in annual maintenance. Sufficient funding is available in the Public Works Maintenance budget to provide for installation and maintenance of the proposed red curb.

Submitted By:

Reviewed By:

Approved By:

Steve Wagner
Community Services Director

Michelle Greene
Administrative
Services Director

Daniel Singer
City Manager

ATTACHMENTS:

1. March 17, 2009 Council Report and attachments
2. No. 09 - ___ entitled "A Resolution of the City Council of the City of Goleta, California Rescinding Resolution No 09-17 and Designating Additional No Parking "Red" Curb Markings on Brandon Drive"
3. Public Meeting Notices

ATTACHMENT 1

March 17, 2009 City Council Report
and attachments



Agenda Item D.1
DISCUSSION/ACTION ITEM
Meeting Date: March 17, 2009

TO: Mayor and Councilmembers

FROM: Dan Singer, City Manager

CONTACT: Steve Wagner, Community Services Director
Marti Schultz, Principal Civil Engineer

SUBJECT: Resolution Establishing a New Restricted Parking Zone on Brandon Avenue

RECOMMENDATION:

Adopt resolution No. 09-__ entitled "A Resolution of the City Council of the City of Goleta, California Designating New No Parking "Red" Curb Markings on Brandon Avenue"

BACKGROUND:

The Metropolitan Transit District (MTD) has submitted a request to the City to extend the location of existing "No Parking" red curb zones at their two bus stops on Brandon Avenue between Evergreen and Padova Drives (Attachment 1). This request is based on insufficient area for buses to exit the travel lane when cars are at the current limits of the parking zones, making safe access by the busses difficult.

In addition, the Brandon School Safe Routes to School Coordinator has requested that a "No Parking" red curb zone be placed at the exit driveway from Brandon School's parking lot (Attachment 2). This request is based on limited site distance for vehicles leaving the school by vehicles parked on the street and the curve in the road.

DISCUSSION:

Staff is supportive of the installation of these new restricted parking zones as they assist in addressing circulation and safety issues in and around Brandon School. Staff recommends these parking restrictions be in effect seven days a week, 24 hours a day.

In Goleta Municipal Code Chapter 23, a resolution is required for establishing restricted parking zones. A resolution authorizing placement of restricted parking zones has been prepared and is presented for adoption herein (Attachment 3).

Public Noticing for the March 17, 2009, public meeting occurred by posting notices at the site, mailing letters to adjacent property owners and occupants, and publishing a notice in the Santa Barbara News Press (Attachment 4), as specified in the Parking Restrictions Protocol (Attachment 5).

It has been determined that the amount of red curb necessary to facilitate the safe sight distance while exiting from Brandon School is less than what has been requested. Staff is recommending that 50 feet of red curb be installed at the south end of the driveway instead of the original proposal of 120 feet. This would leave approximately 4 parking spaces between the red curb at the school exit and the red curb for the bus stop. The same calculation was applied to the north side of the school exit reducing the amount of additional red curb to approximately 65 feet. The red curb changes are shown in Attachment 6. The proposed Resolution has been prepared to reflect the recommended amounts of red curbing.

At the time of the writing of this report, the City had received one comment from the public (Attachment 7). The written request is to not have the parking restriction be in effect seven days a week, 24 hours a day. This would not be supported by staff; the sight distance issues remain the same for safe exiting from the Brandon School at any time. However, the reduction in the amount of red curb at the frontage of the school will support some parking at night and off school hours. The citizen also commented on the need for the bus stop to be extended after 30 years of use. As stated earlier in the report, the vehicles are encroaching into the red zone for the bus stop; forcing the buses to stop with the back end of the bus out in the travel lane.

ALTERNATIVES:

Council may elect not to adopt a resolution establishing restricted parking along the Brandon Avenue in the vicinity of Brandon School or may choose to implement only a portion of the requested parking restriction.

FISCAL IMPACTS:

The fiscal impact associated with the establishment of the proposed restricted parking is approximately \$500 for the installation of red curb signs and paint on Brandon Avenue and \$150 per year per site in annual maintenance. Sufficient funding is available in the Public Works Maintenance budget to provide for installation and maintenance of the proposed red curb.

Submitted By:

Reviewed By:

Approved By:

Steve Wagner
Community Services Director

Michelle Greene
Administrative

Daniel Singer
City Manager

Services Director

ATTACHMENT:

1. Request from MTD for Additional Red Curbs
2. Request from Brandon School SR2S Coordinator
3. A Resolution of the City Council of the City of Goleta, California designating new no parking "Red" curb markings on Brandon Avenue
4. Public Meeting Notice
5. Parking Restrictions Protocol
6. Proposed Restricted Parking for Brandon Drive
7. Comment from Public

ATTACHMENT 1

Request from MTD for Additional Red Curbs

From: Jim Haggerty [mailto:JHAGGERTY@sbmtd.gov]
Sent: Friday, October 03, 2008 4:08 PM
To: Diana White
Subject: Brandon @ Padova and Brandon @ Evergreen

We spoke of these some time ago and I revisit them again after hearing from more drivers and their concerns.

#1: Brandon @ Padova headed toward 101: Can we have approx 20' of read curb extended toward the mountains?

We would like to move the bench from its current location to the other side of the 1st tree (where an accessible symbol is already painted on the sidewalk).

One problem apparently is cars parked in the non-red area forcing the bus to pull in with its tail left out in traffic.

Another area of contention for the drivers is the tree closest to Padova is a nuisance and our maintenance guy took a look and says it would be difficult to trim the tree without hindering it.

#2 Brandon @ Evergreen headed toward the mountains:

Once again we would like to request the red zone be extended to 80 feet toward 101.

How does that sound?

Thanks,
Jim

James D. Haggerty
Quality Assurance Specialist /
Passenger Facilities Manager
Santa Barbara Metropolitan Transit District
550 Olive St.
Santa Barbara, CA 93105
Email: jhaggerty@sbmtd.gov
Work: 805-963-3364
FAX: 805-963-3365

Exchange Defender Message Security: [Check Authenticity](#)

ATTACHMENT 2

Request from Brandon School SR2S Coordinator

Marti Schultz

From: McGolpin [gopar1@cox.net]
Sent: Friday, November 07, 2008 1:15 PM
To: Marti Schultz; Robert Morgenstern
Cc: 'Lynette Meyer'
Subject: Brandon Elementary School red curb

Hi Marti and Robert,

I am writing you both again in hopes that we can immediately get a red curb painted near the parking lot exit on Brandon Drive on the west side of the road. When traffic leaves the Brandon Elementary School parking lot, visibility to the right and to the left, because of vehicles being parked, is dangerous. Plus, there is a bit of a curve in the road which eliminates even more sight distance. I know that Robert told me that in order to get this done, the council had to approve but I am here to ask that you all take a look at this immediately before any serious accidents occur and paint the curb and then the paperwork can catch up to it. I realize that until the council approves of this, it is unenforceable, but most people oblige to the law when there is a red curb, especially around schools. Thank you so much.

Sincerely,

Ruth McGolpin
Brandon's SR2S Coordinator
PTA Health and Safety Coordinator

ATTACHMENT 3

A Resolution of the City Council of the City of Goleta, California
establishing a new restricted parking zone on Brandon Avenue

RESOLUTION NO. 09-__

A RESOLUTION OF THE CITY COUNCIL OF THE CITY OF GOLETA, CALIFORNIA DESIGNATING NEW NO PARKING “RED” CURB MARKINGS ON BRANDON AVENUE

WHEREAS, Section 21351 of the California Vehicle Code authorizes the City to place and maintain, or cause to be placed and maintained, such appropriate signs, signals or traffic control devices as may be necessary to properly indicate and carry out the provisions of the Vehicle Code or local traffic ordinances, or to warn or guide traffic; and

WHEREAS, an engineering analysis has been conducted concerning the establishment of parking restriction zones on Brandon Avenue; and

WHEREAS, Goleta Municipal Code Section 23-11.1 requires a Council adopted resolution for designation of no parking “Red” curb markings; and

WHEREAS, City has protocols for noticing and has complied with those protocols.

NOW, THEREFORE, BE IT RESOLVED BY THE CITY COUNCIL OF THE CITY OF GOLETA AS FOLLOWS:

SECTION 1.

Extend the existing no parking “Red” curb markings beginning at the north side of the existing MTD Bus stop approximately 20 feet.; and

Provide no parking “Red” curb markings from the south side of the Brandon School driveway to approximately 40 feet south of Brandon School driveway.; and

Extend no parking “Red” curb markings beginning at the north side of the Brandon School exit, continuing north approximately 65 feet.; and

Extend no parking “Red” curb markings for MTD bus loading/unloading beginning at the south end of the existing bus stop and continuing south approximately 20 feet.

SECTION 2.

That the City Manager is hereby directed to provide for the installation and maintenance of appropriate signs and markings for the location hereinabove identified.

SECTION 3.

The City Clerk shall certify to the adoption of this Resolution.

PASSED, APPROVED AND ADOPTED this 17th day of March, 2009.

ROGER S. ACEVES, MAYOR

ATTEST:

APPROVED AS TO FORM:

DEBORAH CONSTANTINO
CITY CLERK

TIM W. GILES
CITY ATTORNEY

STATE OF CALIFORNIA)
COUNTY OF SANTA BARBARA) ss.
CITY OF GOLETA)

I, DEBORAH CONSTANTINO, City Clerk of the City of Goleta, California, DO HEREBY CERTIFY that the foregoing Resolution No. 09-___ was duly adopted by the City Council of the City of Goleta at a regular meeting held on the 17th day of March, 2009, by the following vote of the Council:

AYES: COUNCILMEMBERS

NOES: COUNCILMEMBERS

ABSENT: COUNCILMEMBERS

(SEAL)

DEBORAH CONSTANTINO
CITY CLERK

ATTACHMENT 4

Public Meeting Notice



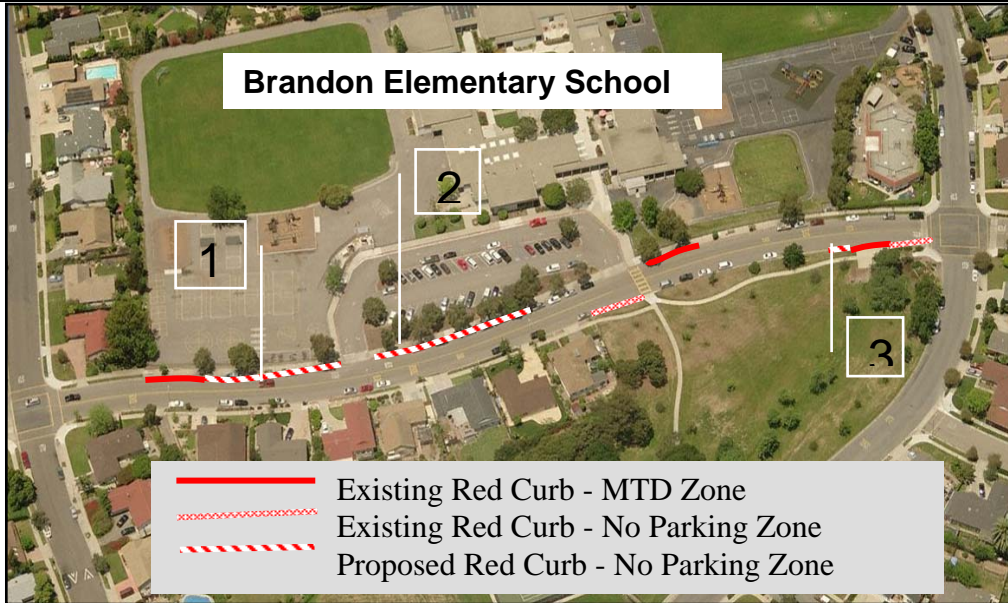
NOTICE OF PUBLIC MEETING

Tuesday, March 17, 2009

CITY OF GOLETA
130 CREMONA DRIVE, SUITE B
GOLETA, CALIFORNIA 93117
(805) 961-7500

Notice is hereby given that a public meeting will be held before a regular meeting of the Goleta City Council at 6:00 p.m., or as soon thereafter as may be heard, on Tuesday, March 17, 2009, at City of Goleta, City Hall, 130 Cremona Drive, Suite B, Goleta, California, on the following matter:

Consider adoption of resolution establishing new restricted parking areas on Brandon Avenue.



To mitigate the risk to public safety, improve site visibility while exiting Brandon School, and provide for adequate MTD bus access to local bus stops, the City of Goleta is proposing to extend red curbing as approximately shown above, and described below:

- 1. Extend the existing Red Curbing beginning at the north side of the existing MTD Bus stop, and continuing to the south side of the Brandon School exit.**
- 2. Extend Red Curbing beginning at the north side of the Brandon School exit, and continuing north approximately 100-feet.**
- 3. Extend Red Curbing for MTD bus loading/unloading beginning at the south end of the existing bus stop and continuing south an additional 20 feet.**

The proposed Red Curb parking restrictions would be in effect seven (7) days a week, 24-hours a day.

Files for the above referenced matters are available to public inspection at the City of Goleta, 130 Cremona Drive Suite B Goleta, California 93117, prior to the start of the meeting.

All interested persons are invited to attend, participate and be heard. Written comments should be sent to the City of Goleta, 130 Cremona Drive Suite B Goleta, California 93117, prior to the start of the public hearing.

Deborah Constantino
City Clerk

Note: In compliance with the Americans with Disabilities Act, if you need special assistance to participate in this meeting, please contact the City at (805) 961-7500 or through the California Relay Service. Notification 48 hours in advance of the meeting will enable the City to make reasonable arrangements to ensure accessibility to this meeting.

ATTACHMENT 5

Parking Restrictions Protocol

Parking Restrictions Protocol

1. A request for parking restriction is received from the public or City personnel and is logged in to the City's service request database.
2. The requesting party is contacted to clarify the request and obtain any background information. This step includes contacting the requesting person and determining the reason for the request. There are often underlying reasons for such requests that are not readily apparent, or disclosed when the original request is made. This step helps to identify those underlying issues.
3. The site visit is then conducted to:
 - ◆ Meet with the local resident or business owner about their request.
 - ◆ Conduct a field review to observe the situation firsthand.
 - ◆ Verify and collect relevant data, such as traffic counts, collision reports, speed data, available sight distance, street width, driveway locations, existing signing and striping, vehicle queuing, parking availability and demand, pedestrian and cyclist patterns, signal timing, etc.
 - ◆ Meet with other affected parties (such as adjacent properties, homeowner associations, business groups, Sheriffs Department personnel, etc.) to discuss concerns, as well as perceived causes and potential options.
 - ◆ Take digital pictures as necessary to document existing conditions.

Steps 2 and 3 could be repeated until sufficient information is obtained in order to complete the evaluation in Step 4.

4. The request is then evaluated based on the information gathered in Steps 2 and 3. Other factors considered in the evaluation include potential impacts if the restriction is or is not implemented, as well as any feasible and/or appropriate alternatives to the request that could resolve the issue. For example, an alternative to a "No Parking Anytime" request may be to restrict parking to certain hours, or to restrict parking of commercial vehicles only.

5. A recommendation to either approve or deny the request based upon the evaluation is made by the City Engineer. Depending on the outcome of the recommendation one of two things will happen:

Request Recommended for Approval

If the recommendation is to approve the request for a parking restriction a notice is issued to the public for comment. The notice will include a City contact name, phone number, and email address so that interested persons from the public may submit their comments and any concerns. In general, noticing will include all properties within 500 feet of the parking restriction along the street that is impacted. Limits of noticing may vary with each request and may include more area as deemed necessary. All information, comments, and concerns are to be provided to Council as a part of the Agenda Report for review. (Continue to step 6.)

Parking Restrictions Protocol

Request is Denied:

If the recommendation is to deny the request, a letter is to be sent to the requesting party describing the reasons why the request is being denied with a contact name, phone number and email address for further discussion or clarification. A copy of the letter is provided to City Manager and Council for their information.

6. If recommended for approval, the request will be brought to the City Council for consideration. All information collected and any comment received as a result of the public notice will be provided as a part of the agenda report for review and consideration by Council.

7. The City Council approves or denies the request.

ATTACHMENT 6

Proposed Restricted Parking for Brandon Drive

Proposed Red Curb on Brandon Drive Between Padova Drive and Evergreen Drive



ATTACHMENT 7

Comment from Public

Marti Schultz

From: Chaszimmer@aol.com
Sent: Thursday, March 05, 2009 10:21 AM
To: Marti Schultz
Cc: Roger Aceves; Michael T. Bennett; Margaret Connell; Edward Easton; Eric Onnen
Subject: Red Curbs at Brandon School

Dear Marti Schultz,

This is in regard to your proposal to red curb, on a 24/7 basis, all of the west side of Brandon Drive fronting Brandon school, in order to provide greater safety for students and parents, and easier MTD bus access.

We live at the NW corner of Brandon and Padova backing onto the school yard, and have done so for 30 plus years. Accordingly, we have a fair amount of knowledge and experience in this area. We also work as voting precinct officials at Brandon school for all elections.

Having said that, we have looked at your red curb proposal and wonder why, after at least 30 years, the existing situation suddenly needs changing? Conceding there may be sufficient reason, and after thoughtful consideration, we find that the stated purposes are commendable but a little draconian for the residents who live across the street from the school.

We don't believe the proposed restrictions need to be 24/7. The school only operates basically from 7 AM to 4 PM, Monday through Friday. Accordingly, having the designated portion read "No Parking from 7 AM to 4 PM, Monday thru Friday" would accomplish the desired increased safety for students and parents, while allowing the area residents to park over night, after work and on the weekends as they currently do. (We assume they have all received personal notices of the proposed change, and not just the small signs posted on the other side of the street.)

The MTD bus concern (for over 30 years they have managed) could be addressed by simply giving their red curb one additional car length. However, we've never understood why there had to be two bus stops in the same block within a hundred yards of each other. Could one in the middle of the block, between entrance and exit to Brandon school serve everyone and allow more parking spaces on the street, which are truly needed when there is a school event and cars fill the surrounding streets, creating other problems?

A further problem in our minds is the effect on voters. Already, we receive heated complaints each election from voters that there are no places for them to park so that they may vote without unnecessary delay. The school staff usually takes all spots in the parking lot, and driveway space must be kept clear for the drop off and pickup of students. We have no solution to this dilemma, but we know your proposal will exacerbate the situation.

We hope you will accept these comments and suggestions in the spirit in which they are offered, and give them serious consideration when making your final decision.

Sincerely,

Charles and Nina Zimmer
7610 Padova Drive
968-4084

Need a job? [Find employment help in your area.](#)

ATTACHMENT 2

A Resolution of the City Council of the City of Goleta, California
Rescinding and Replacing Resolution No. 09-17 Designating New
No Parking "Red" Curb Markings on Brandon Drive

RESOLUTION NO. 09-__

A RESOLUTION OF THE CITY COUNCIL OF THE CITY OF GOLETA, CALIFORNIA RESCINDING RESOLUTION NO. 09-17 AND DESIGNATING ADDITIONAL NO PARKING “RED” CURB MARKINGS ON BRANDON DRIVE

WHEREAS, Section 21351 of the California Vehicle Code authorizes the City to place and maintain, or cause to be placed and maintained, such appropriate signs, signals or traffic control devices as may be necessary to properly indicate and carry out the provisions of the Vehicle Code or local traffic ordinances, or to warn or guide traffic; and

WHEREAS, an engineering analysis has been conducted concerning the establishment of parking restriction zones on Brandon Drive; and

WHEREAS, Goleta Municipal Code Section 23-11.1 requires a Council adopted resolution for designation of no parking “Red” curb markings; and

WHEREAS, City has protocols for noticing and has complied with those protocols.

NOW, THEREFORE, BE IT RESOLVED BY THE CITY COUNCIL OF THE CITY OF GOLETA AS FOLLOWS:

SECTION 1.

Rescind Resolution No. 09-17.

SECTION 2.

Beginning at the north end of the existing MTD Bus stop north of Padova Drive and extending no parking “Red” curb markings northerly approximately 20 feet for a total of approximately 80 feet on the west side of Brandon Drive; and

Establish no parking “Red” curb markings beginning at the south side of the Brandon School driveway exit (south curb cut) and extending southerly approximately 40 feet on the west side of Brandon Drive; and

Beginning at the north end of the existing no parking “Red” curb markings at the north side of the Brandon School driveway exit (south curb cut) and extending northerly approximately 15 feet for a total of approximately 65 feet on the west side of Brandon Drive; and

Beginning at the south end of the existing MTD bus stop south of Evergreen Drive and extending no parking “Red” curb markings southerly approximately 20 feet or a total of approximately 80 feet on the east side of Brandon Drive.

SECTION 3.

That the City Manager is hereby directed to provide for the installation and maintenance of appropriate signs and markings for the locations hereinabove identified.

SECTION 4.

The City Clerk shall certify to the adoption of this Resolution.

PASSED, APPROVED AND ADOPTED this 7th day of April, 2009.

ROGER S. ACEVES, MAYOR

ATTEST:

APPROVED AS TO FORM:

DEBORAH CONSTANTINO
CITY CLERK

TIM W. GILES
CITY ATTORNEY

STATE OF CALIFORNIA)
COUNTY OF SANTA BARBARA) ss.
CITY OF GOLETA)

I, DEBORAH CONSTANTINO, City Clerk of the City of Goleta, California, DO HEREBY CERTIFY that the foregoing Resolution No. 09-___ was duly adopted by the City Council of the City of Goleta at a regular meeting held on the 7th day of April, 2009, by the following vote of the Council:

AYES: COUNCILMEMBERS

NOES: COUNCILMEMBERS

ABSENT: COUNCILMEMBERS

(SEAL)

DEBORAH CONSTANTINO
CITY CLERK

ATTACHMENT 3

Public Meeting Notices



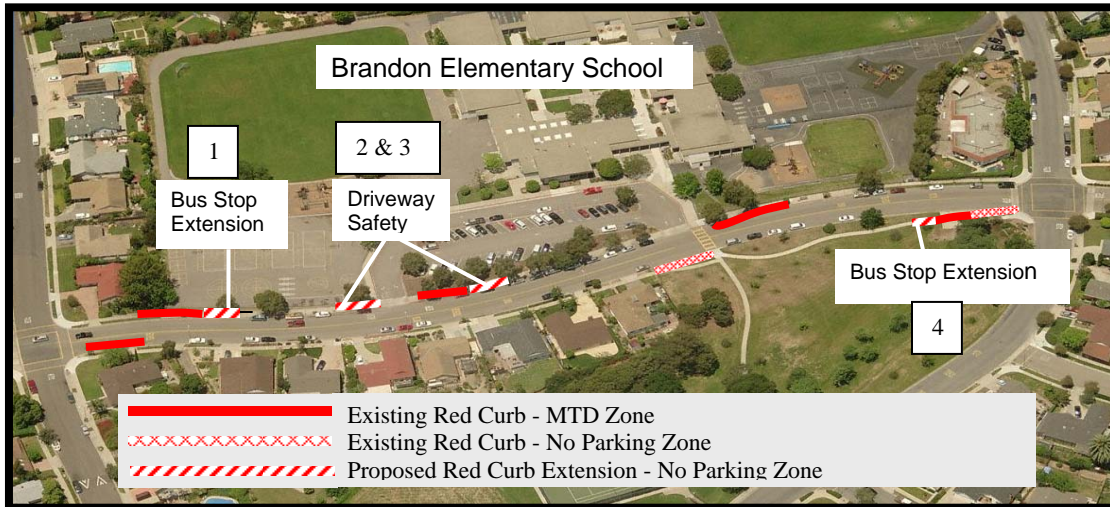
RE-NOTICE OF PUBLIC MEETING

Tuesday, April 7, 2009

CITY OF GOLETA
130 CREMONA DRIVE, SUITE B
GOLETA, CALIFORNIA 93117
(805) 961-7500

Notice is hereby given that a public meeting will be held at the regular Goleta City Council meeting on Tuesday, April 7, 2009, at City of Goleta, City Hall, 130 Cremona Drive, Suite B, Goleta, California, on the following matter: The City Council Agenda will be posted the Friday before the meeting. Check the City's website at www.cityofgoleta.org or call (805) 961-7500 for approximate time the item will be heard.

Consider adoption of resolution establishing new restricted parking areas on Brandon Drive.



This item is being re-noticed and will go back to City Council due to an error in the first posting and noticing.

To mitigate the risk to public safety, improve site visibility while exiting Brandon School, and provide for adequate MTD bus access to local bus stops, the City of Goleta is proposing to extend and/or establish red curbing as approximately shown above, and described below:

1. Beginning at the north end of the existing MTD Bus stop north of Padova Drive and extending no parking "Red" curb markings northerly approximately 20 feet for a total of approximately 80 feet on the west side of Brandon Drive; and
2. Establish no parking "Red" curb markings beginning at the south side of the Brandon School driveway exit (south curb cut) and extending southerly approximately 40 feet on the west side of Brandon Drive; and
3. Beginning at the north end of the existing no parking "Red" curb markings at the north side of the Brandon School driveway exit (south curb cut) and extending northerly approximately 15 feet for a total of approximately 65 feet on the west side of Brandon Drive; and
4. Beginning at the south end of the existing MTD bus stop south of Evergreen Drive and extending no parking "Red" curb markings southerly approximately 20 feet for a total of approximately 80 feet on the east side of Brandon Drive.

The proposed Red Curb parking restrictions would be in effect seven (7) days a week, 24-hours a day.

Files for the above referenced matters are available to public inspection at the City of Goleta, 130 Cremona Drive Suite B Goleta, California 93117, prior to the start of the meeting.

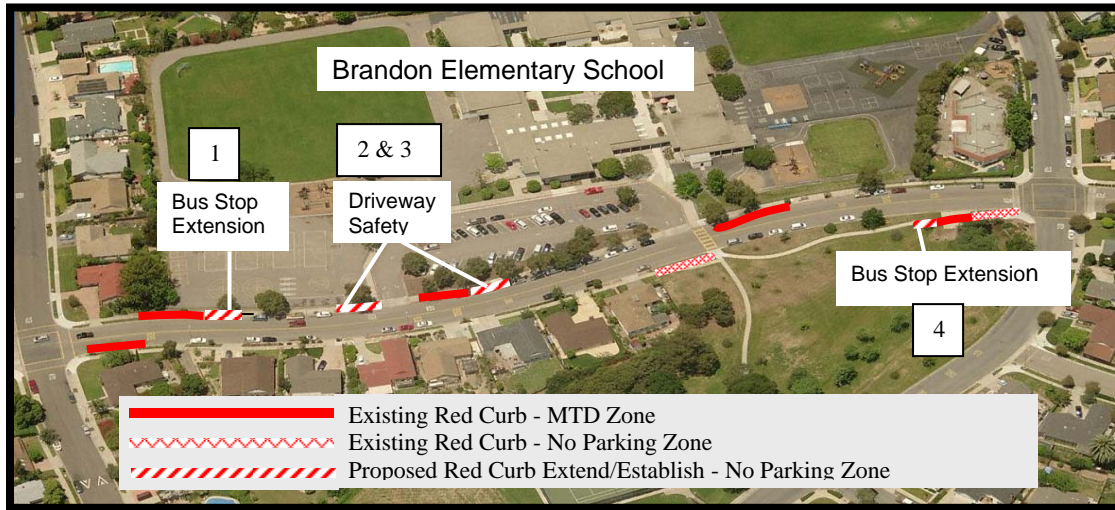
All interested persons are invited to attend, participate and be heard. Written comments should be sent to the City of Goleta, 130 Cremona Drive Suite B Goleta, California 93117, prior to the start of the public hearing.

Deborah Constantino
City Clerk

Note: In compliance with the Americans with Disabilities Act, if you need special assistance to participate in this meeting, please contact the City at (805) 961-7500. Notification 48 hours in advance of the meeting will enable the City to make reasonable arrangements.

CITY OF GOLETA

RE-POSTING Proposed Red Curbing on Brandon Drive



To mitigate the risk to public safety, improve site visibility while exiting Brandon School, and provide for adequate MTD bus access to local bus stops, the City of Goleta is proposing to extend and/or establish red curbing as approximately shown above, and described below:

1. Beginning at the north end of the existing MTD Bus stop north of Padova Drive and extending no parking "Red" curb markings northerly approximately 20 feet for a total of approximately 80 feet on the west side of Brandon Drive; and
2. Establish no parking "Red" curb markings beginning at the south side of the Brandon School driveway exit (south curb cut) and extending southerly approximately 40 feet on the west side of Brandon Drive; and
3. Beginning at the north end of the existing no parking "Red" curb markings at the north side of the Brandon School driveway exit (south curb cut) and extending northerly approximately 15 feet for a total of approximately 65 feet on the west side of Brandon Drive; and
4. Beginning at the south end of the existing MTD bus stop south of Evergreen Drive and extending no parking "Red" curb markings southerly approximately 20 feet or a total of approximately 80 feet on the east side of Brandon Drive.

The proposed Red Curb parking restrictions would be in effect seven (7) days a week, 24-hours a day.

The proposed Red Curbing shall be presented at the City Council meeting on April 7, 2009, at City Hall, 130 Cremona Drive, Suite B, Goleta. The City Council Agenda will be posted the Friday before the meeting. Check the City's website at www.cityofgoleta.org or call (805) 961-7500 for approximate time the item will be heard. **This item is being returned to City Council due to an error in the public posting and noticing process.** You may address questions or comments regarding the proposed Red Curbing to Diana White, Assistant Engineer, at the address above, or by telephone (805-961-7564) or by email at dwhite@cityofgoleta.org. We appreciate your input!