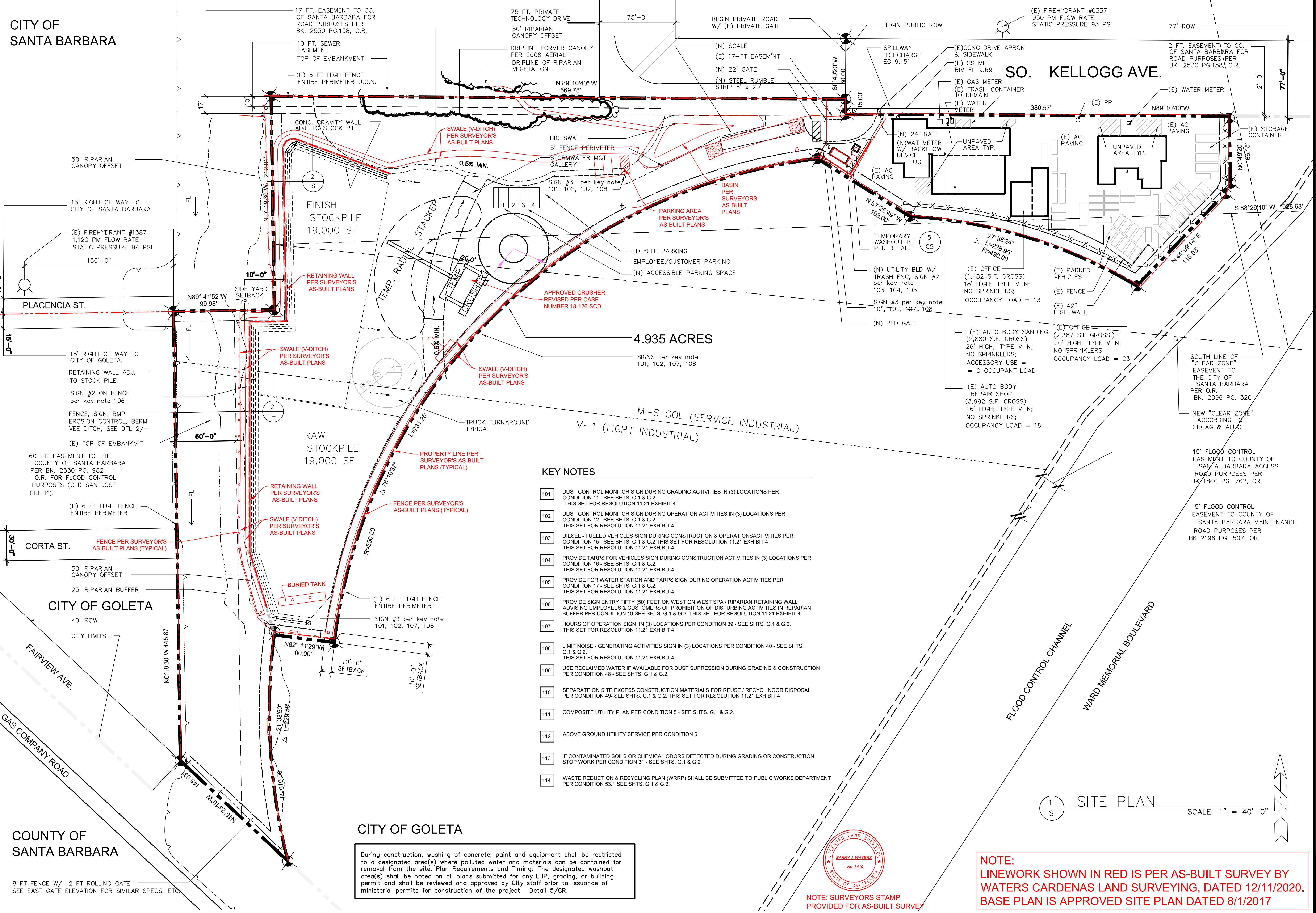


CITY OF SANTA BARBARA



SHEET INDEX

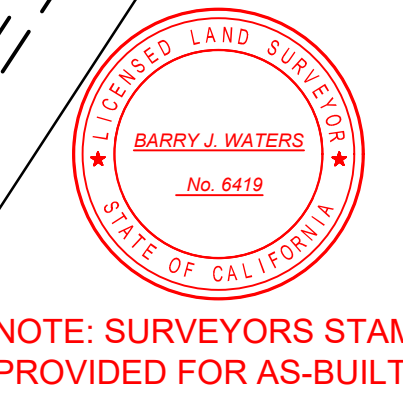
S	SITE PLAN
A	PROPOSED BUILDING PLANS/ELEVATIONS
GR	GRADING PLAN
U	UTILITY PLAN
G1	CITY OF GOLETA RES 11-21 CONDITIONS
G2	CITY OF GOLETA RES 11-21 CONDITIONS
BR	BIKE RACK DETAIL

PROJECT DATA

PROJECT ADDRESS:	909 SOUTH KELLOGG AVE GOLETA, CA 93117
OWNER:	KELLOGG AVENUE LLC 805-563-4927
ARCHITECT:	PETER WALKER HUNT AIA P.O. BOX 92045 SANTA BARBARA, CA 93190 (805) 965-5600 PETERWALKERHUNT.COM
APN:	71-190-34
ZONE:	M-S GOL & M-1
GENERAL PLAN DESIGNATION:	SERVICE INDUSTRIAL
DESCRIPTION OF USE:	BUSINESS & INDUSTRIAL
PARKING:	GENERAL COMMERCIAL - 1 SPACE / 300 SF GROSS REQUIRED PROVIDED 1 4
CONSTRUCTION TYPE:	V-N
FIRE ZONE:	NO
OCCUPANCY GROUP:	B
BUILDING CODE:	2013 CBC, GMC
PARCEL:	4,935 ACRES (214,969 SF.)
SLOPE:	0.50%
GRADING:	0 CU YD FILL 700 CU YD CUT
SETBACKS:	FRONT: 20' PL & 50' CL 10' SIDE & REAR
BLD HEIGHT LIMIT:	35'-0"
LANDSCAPING:	10% = 21,497 SF (FLOOD EASEMENT = 26,760 SF)
(E) BUILDING COVERAGE:	5% = 10,741 SF
(N) BUILDINGS COVERAGE:	0.0007% = 160 SF
OPERATIONS AREA:	22.3% = 48,000 SF
MATERIAL STORAGE:	17.7% = 38,000 SF

- KEY NOTES
- 101 DUST CONTROL MONITOR SIGN DURING GRADING ACTIVITIES IN (3) LOCATIONS PER CONDITION 11 - SEE SHTS. G.1 & G.2. THIS SET FOR RESOLUTION 11.21 EXHIBIT 4
 - 102 DUST CONTROL MONITOR SIGN DURING OPERATION ACTIVITIES IN (3) LOCATIONS PER CONDITION 12 - SEE SHTS. G.1 & G.2. THIS SET FOR RESOLUTION 11.21 EXHIBIT 4
 - 103 DIESEL-FUELED VEHICLES SIGN DURING CONSTRUCTION & OPERATIONS ACTIVITIES PER CONDITION 15 - SEE SHTS. G.1 & G.2. THIS SET FOR RESOLUTION 11.21 EXHIBIT 4
 - 104 PROVIDE TARPS FOR VEHICLES SIGN DURING CONSTRUCTION ACTIVITIES IN (3) LOCATIONS PER CONDITION 16 - SEE SHTS. G.1 & G.2. THIS SET FOR RESOLUTION 11.21 EXHIBIT 4
 - 105 PROVIDE FOR WATER STATION AND TARPS SIGN DURING OPERATION ACTIVITIES PER CONDITION 17 - SEE SHTS. G.1 & G.2. THIS SET FOR RESOLUTION 11.21 EXHIBIT 4
 - 106 PROVIDE SIGN ENTRY FIFTY (50) FEET ON WEST ON WEST SPA / RIPARIAN RETAINING WALL ADVISING EMPLOYEES & CUSTOMERS OF PROHIBITION OF DISTURBING ACTIVITIES IN RIPARIAN BUFFER PER CONDITION 19 SEE SHTS. G.1 & G.2. THIS SET FOR RESOLUTION 11.21 EXHIBIT 4
 - 107 HOURS OF OPERATION SIGN IN (3) LOCATIONS PER CONDITION 39 - SEE SHTS. G.1 & G.2. THIS SET FOR RESOLUTION 11.21 EXHIBIT 4
 - 108 LIMIT NOISE - GENERATING ACTIVITIES SIGN IN (3) LOCATIONS PER CONDITION 40 - SEE SHTS. G.1 & G.2. THIS SET FOR RESOLUTION 11.21 EXHIBIT 4
 - 109 USE RECLAIMED WATER IF AVAILABLE FOR DUST SUPPRESSION DURING GRADING & CONSTRUCTION PER CONDITION 48 - SEE SHTS. G.1 & G.2.
 - 110 SEPARATE ON SITE EXCESS CONSTRUCTION MATERIALS FOR REUSE / RECYCLING OR DISPOSAL PER CONDITION 49 - SEE SHTS. G.1 & G.2. THIS SET FOR RESOLUTION 11.21 EXHIBIT 4
 - 111 COMPOSITE UTILITY PLAN PER CONDITION 5 - SEE SHTS. G.1 & G.2.
 - 112 ABOVE GROUND UTILITY SERVICE PER CONDITION 6
 - 113 IF CONTAMINATED SOILS OR CHEMICAL ODORS DETECTED DURING GRADING OR CONSTRUCTION STOP WORK PER CONDITION 31 - SEE SHTS. G.1 & G.2.
 - 114 WASTE REDUCTION & RECYCLING PLAN (WRRP) SHALL BE SUBMITTED TO PUBLIC WORKS DEPARTMENT PER CONDITION 53.1 SEE SHTS. G.1 & G.2.

NOTE:
LINEWORK SHOWN IN RED IS PER AS-BUILT SURVEY BY WATERS CARDENAS LAND SURVEYING, DATED 12/11/2020. BASE PLAN IS APPROVED SITE PLAN DATED 8/1/2017



LEGEND

FH	FIRE HYDRANT
PP	POWER POLE
SS	SANITARY SEWER
MH	MAN HOLE
FL	FLOW
(E)	EXISTING
TAC	TOP OF ASPHALTIC CONCRETE
TCB	TOP OF CATCH BASIN
FG	FINISH GRADE

AS-BUILT LEGEND

- PROPERTY LINE
- FENCE
- WALL

1 SITE PLAN SCALE: 1" = 40'-0"

8 FT FENCE W/ 12 FT ROLLING GATE
SEE EAST GATE ELEVATION FOR SIMILAR SPECS, ETC.

CITY OF GOLETA
During construction, washing of concrete, paint and equipment shall be restricted to a designated area(s) where polluted water and materials can be contained for removal from the site. Plan Requirements and Timing: The designated washout area(s) shall be noted on all plans submitted for any LUP, grading, or building permit and shall be reviewed and approved by City staff prior to issuance of ministerial permits for construction of the project. Detail 5/GR.