

Goleta Train Depot EIR Virtual Scoping Presentation



Public Comment Period: May 25, 2020 – June 24, 2020



Purpose of the Virtual Scoping Presentation

- Provide an overview of the project
- To receive comments from interested parties on issues the Environmental Impact Report (EIR) should address
- Detail opportunities for community input



Train Depot Master Plan Community Workshop, May 8, 2019

**Due to current circumstances associated with COVID-19, the City of Goleta is not accessible and a public meeting cannot be held. This presentation is available in lieu of a scoping meeting, and will be available during the duration of the NOP public review period*

Virtual Scoping Presentation Outline



- Background & Introduction
- CEQA Overview
- Project Description
- Environmental Analysis
- EIR Schedule
- Public Comments

Background & Introduction



- Scoping Presentation prepared by
 - **City Staff:** Jaime Valdez and Claudia Dato, Principle Project Managers
 - **Environmental Consultants:** Rincon Consultants, Inc.
- This presentation is focused on the environmental concerns of the project
- Train depot design meetings will take place in the Summer of 2020. Input on the overall project design will be solicited at this time. Information about future public meetings and opportunities to provide input on the Goleta Train Depot Project will be posted on the Project web page

The purposes of CEQA are to:

- Disclose the potential significant environmental effects of proposed actions
- Identify ways to avoid or reduce adverse environmental effects
- Consider feasible alternatives to proposed actions
- Foster interagency coordination in the review of projects
- Enhance public participation in the planning process

An Initial Study has been prepared and is available for review, which determined an Environmental Impact Report (EIR) is required.

What is an EIR?

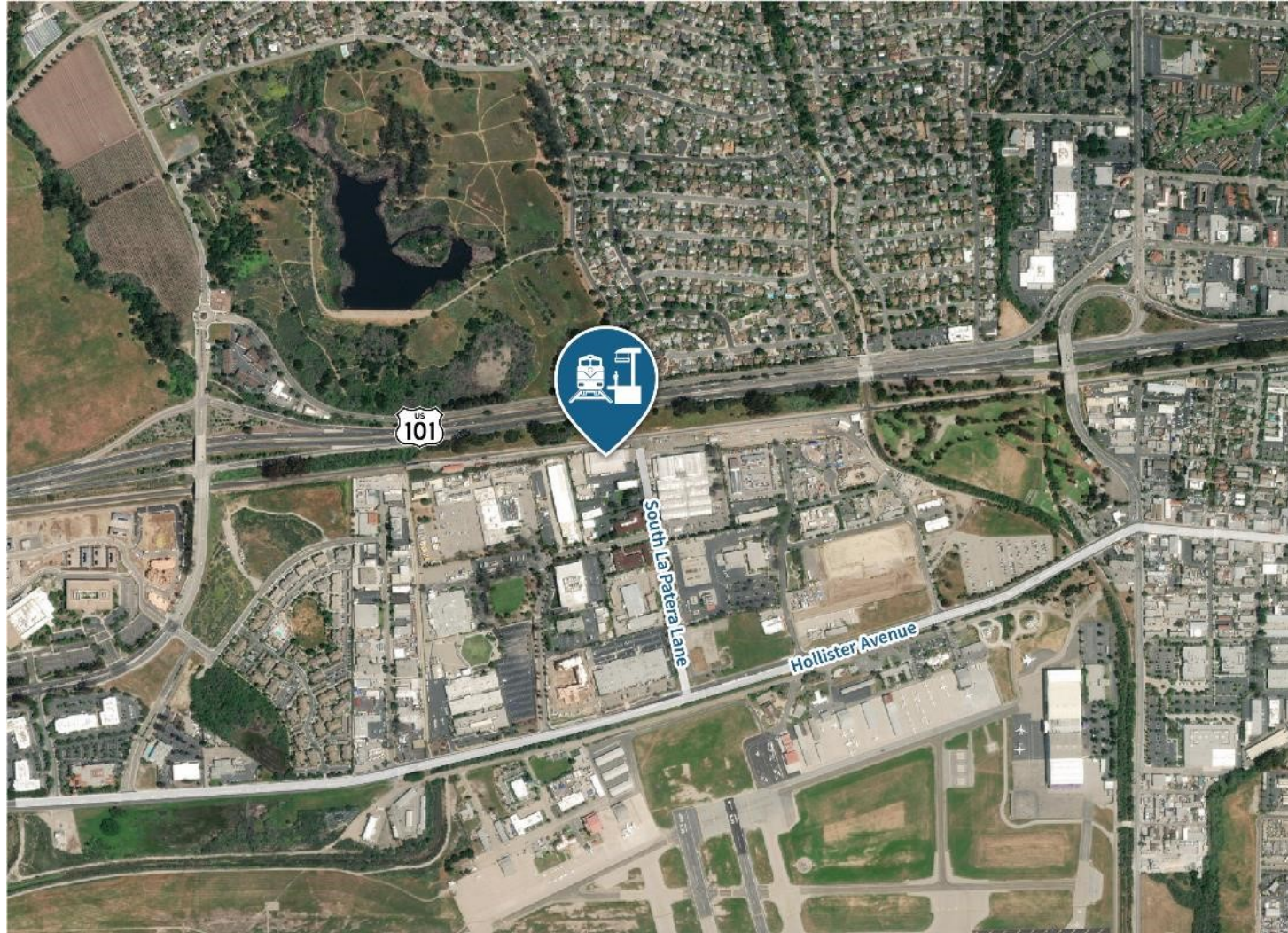
- An informational document that discloses the potential environmental impacts of a project
- Identifies mitigation measures
- Describes feasible alternatives to the proposed project
- Does not approve or deny a project

EIR Process

We are here



Project Location



Project Description

New Goleta Train Depot

- Purpose: Construct a new depot to meet the needs of riders and to increase ridership and reduce congestion
- Approximately 9,000 square-foot structure
- 126 spaces of on-site parking and pick-up/drop-off areas
- Meet LEED silver standards



Project Description

Proposed Amenities

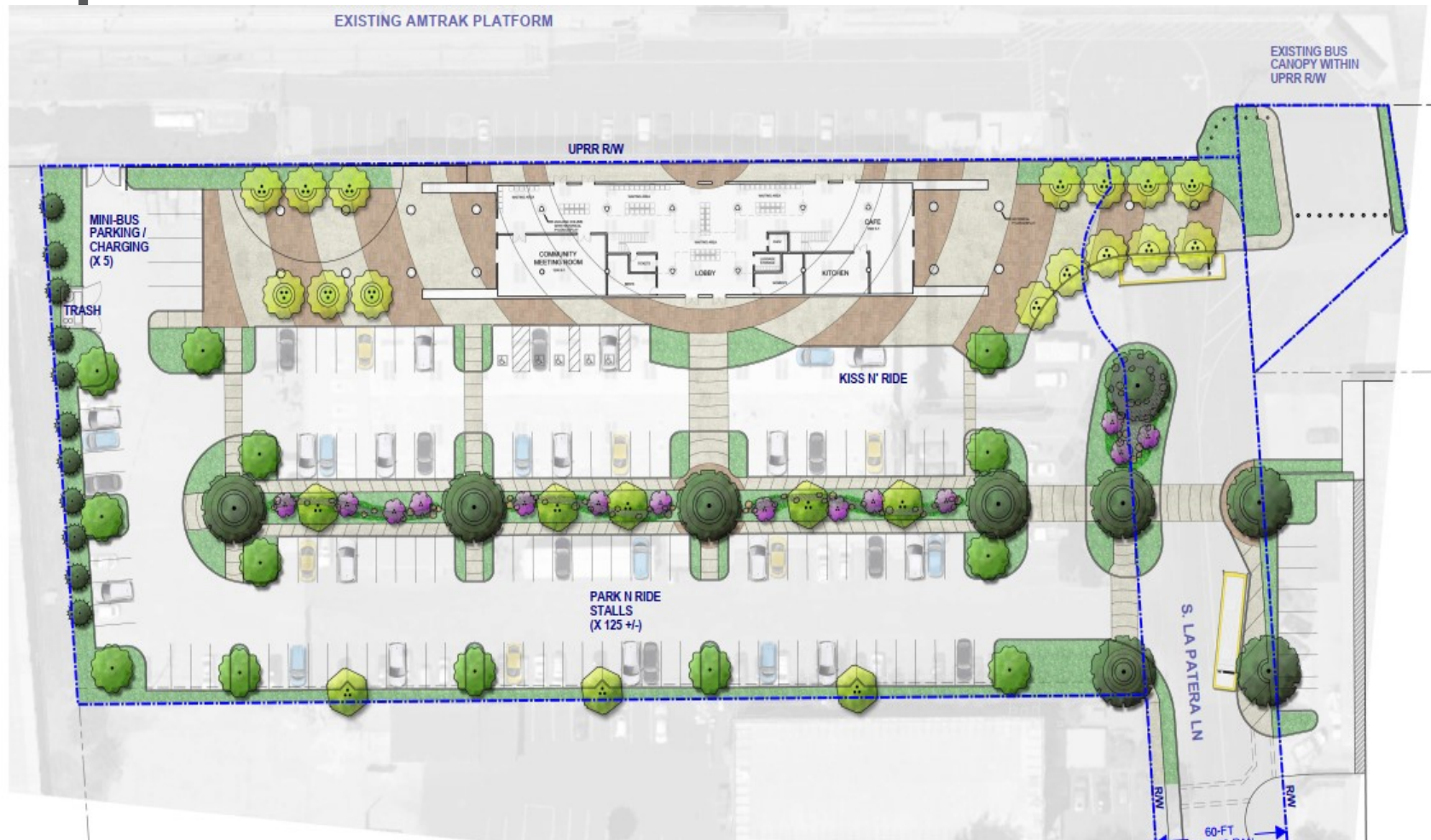
- Lobby, indoor and outdoor waiting areas, café, restrooms, and a meeting room
- On-site ticketing, bicycle storage and parking, and community displays
- On-site signage and landscaping



Enclosed bicycle parking, Oceanside, California

Project Description

Proposed Site Plan



EIR Issues to be Analyzed



The Initial Study concluded the following issue areas will **not** be discussed in the EIR:

- Aesthetics
- Agriculture and Forestry Resources
- Biological Resources
- Cultural Resources
- Energy
- Geology and Soils
- Hydrology and Water Quality
- Land Use and Planning
- Mineral Resources
- Population and Housing
- Public Services
- Recreation
- Wildfire

EIR Issues to be Analyzed



The Initial Study concluded the following issue areas will be discussed in the EIR:

- **Air Quality** – construction and operation emissions and exposure to sensitive receptors
- **Greenhouse Gas Emissions** – construction and operational emissions
- **Hazards & Hazardous Materials** – potential contaminated soils on the project site
- **Noise** – Generation of noise during construction and operation, primarily through traffic, and vibration impacts on adjacent structures

EIR Issues to be Analyzed



The Initial Study concluded the following issue areas will be discussed in the EIR continued:

- **Transportation** – traffic generated by the project impacting the circulation system and Vehicle Miles Traveled (VMT) and creating a hazardous design
- **Tribal Cultural Resources** – construction impacting unidentified tribal cultural resources
- **Utilities and Service Systems** – impacts to water supply

Cumulative Impacts

- The EIR will consider the impacts of other development in combination with the Goleta Train Depot project

Alternatives

- The EIR is required to have an analysis of a “reasonable range” of alternatives
- Up to three alternatives will be analyzed, including the required “No Project” alternative
- Project alternatives will be developed during the preparation of the Draft EIR.

EIR Schedule



- **Receive Scoping Comments by:** *June 24, 2020 at 5:30 pm (see last slide for instructions)*
- **Publish Draft EIR:** *Fall 2020 (estimated)*
- **45 Day Public Review:** *Fall 2020 (estimated)*
- **Publish Final EIR and Response to Comments:** *Early 2021 (estimated)*
- **Adoption/Final EIR Certification:** *Early 2021 (estimated)*

We welcome your comments on

- The scope, focus, and content of the EIR
- Suggested Mitigation Measures to avoid or reduce environmental effects
- Suggested Alternatives to avoid or reduce environmental effects



Thank you for your participation

Submit questions or comments from May 25, 2020 to June 24, 2020 (30 days) to:

**Jaime Valdez, Principal Project Manager
City of Goleta**

**130 Cremona Drive, Suite B
Goleta, CA 93117 or jvaldez@cityofgoleta.org.**

All comments must be postmarked no later than June 24, 2020. Please limit comments to environmental issues. Emails are the preferred method of comment during the COVID-19 pandemic and must be received by June 24, 2020 at 5:30 P.M.

