

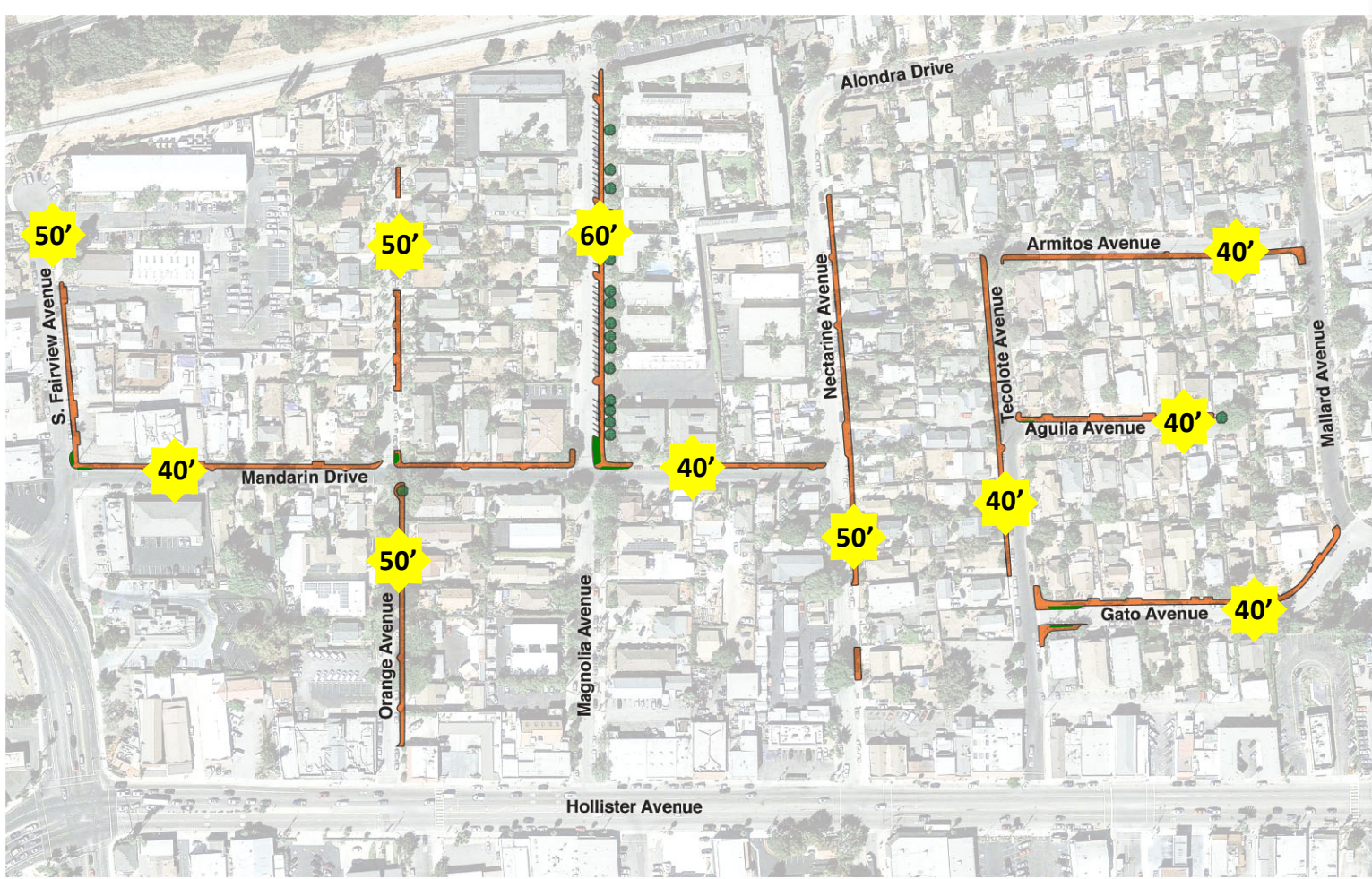


COMING SOON!



BACKGROUND

*Residential area built prior to
current standards*



OLD TOWN GOLETA

- PROPOSED SIDEWALKS
- TREES
- ANGLED PARKING (POTENTIAL)



PINE AVENUE



KEY ISSUES: *sidewalks, parking, drainage*



KEY ISSUES: sidewalks, parking, drainage



KEY ISSUES: sidewalks, parking, drainage



CEQA ADDENDUM

*Addendum to Final Mitigated Negative
Declaration*

CEQA ADDENDUM

- Initial Study and Final Mitigated Negative Declaration – Council Adopted November 7, 2017
- Addendum needed
- CEQA Section 15164(b) – only minor technical changes or additions
- CEQA Section 15162 – conditions do not require a subsequent negative declaration
- CEQA Section 15164(c) – does not require circulation.
- Additional minor scope:
 - Sidewalk infill Orange Avenue – northern end, east side
 - Sidewalk infill Orange Avenue – west side, north of Mandarin Ave
 - Adjusting curb and gutter on Gato Avenue – widens travel lanes at curve near Mallard Ave
 - Additional repaving to opposite sides of the streets – Magnolia, Nectarine, & Orange
 - Drainage improvements on the northern side of Armitos Avenue

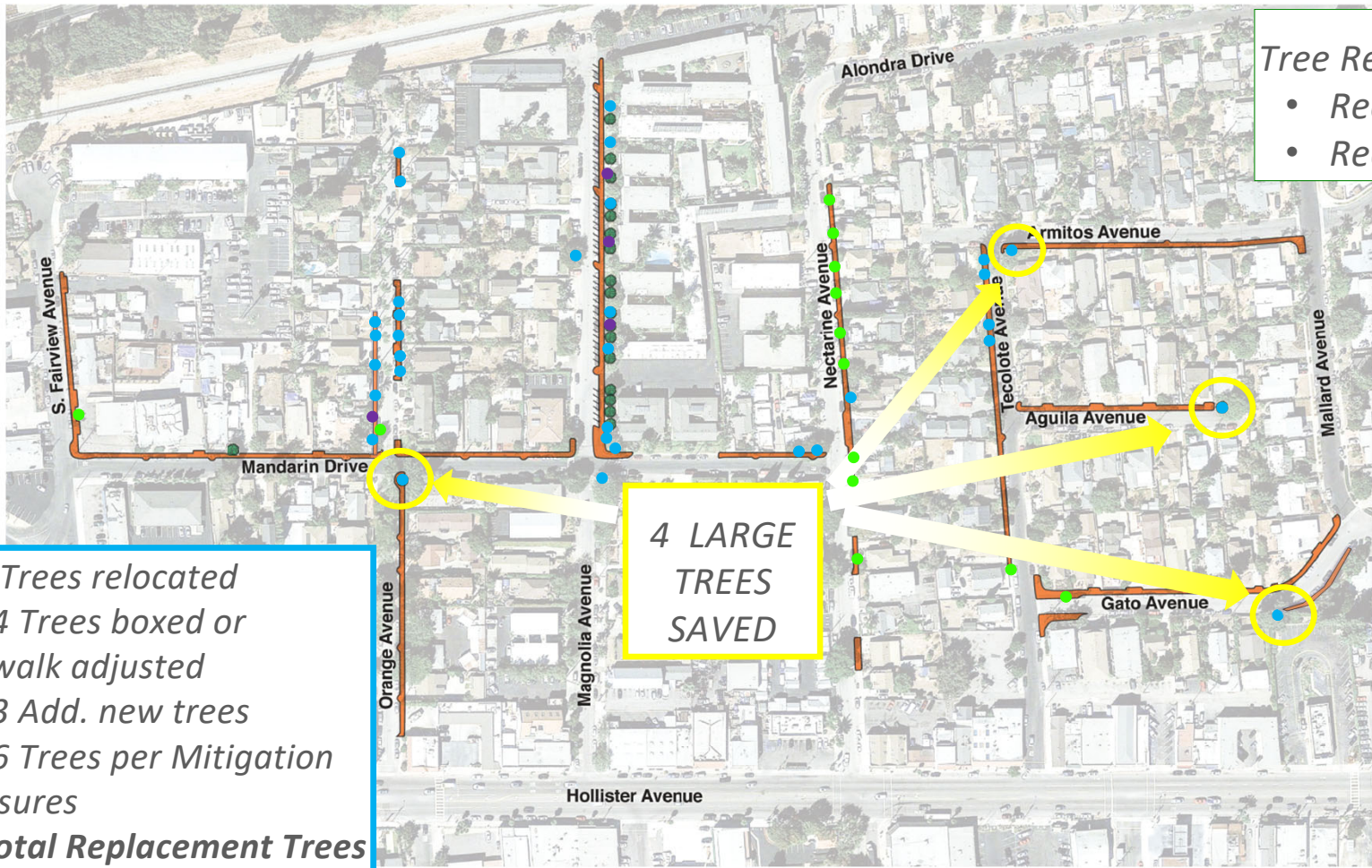


TREES

Approx. 74 affected trees in project area

- *26 removed & replaced*
- *4 relocated*
- *44 Protected – worked around, trimmed, etc.*

- *13 additional new trees planted*
- *Total replacement = 39 (1.5:1 ratio)*

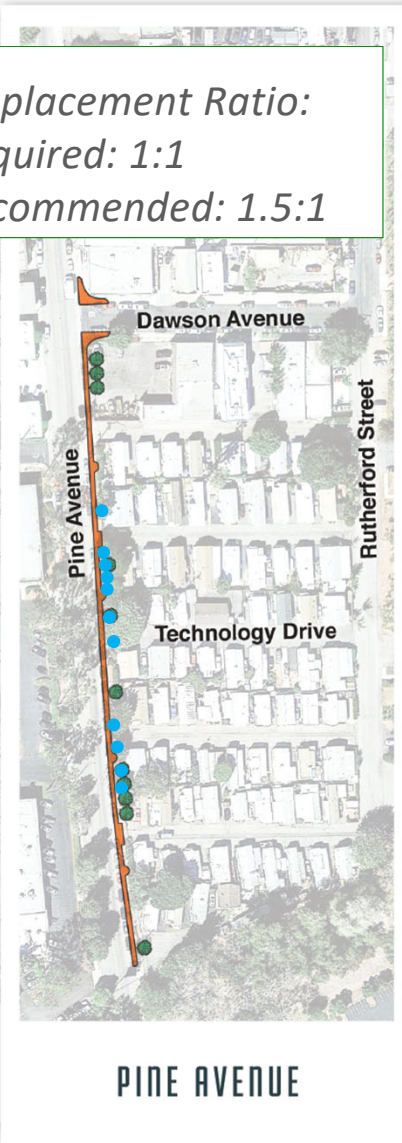


Tree Replacement Ratio:

- *Required: 1:1*
- *Recommended: 1.5:1*

- 4 Trees relocated
- 44 Trees boxed or sidewalk adjusted
- 13 Add. new trees
- 26 Trees per Mitigation Measures
- 39 Total Replacement Trees

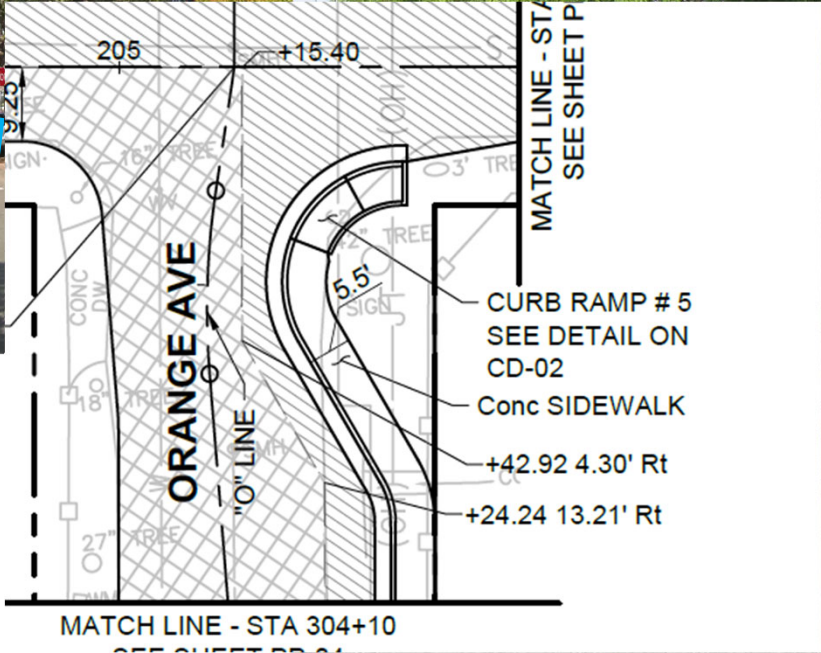
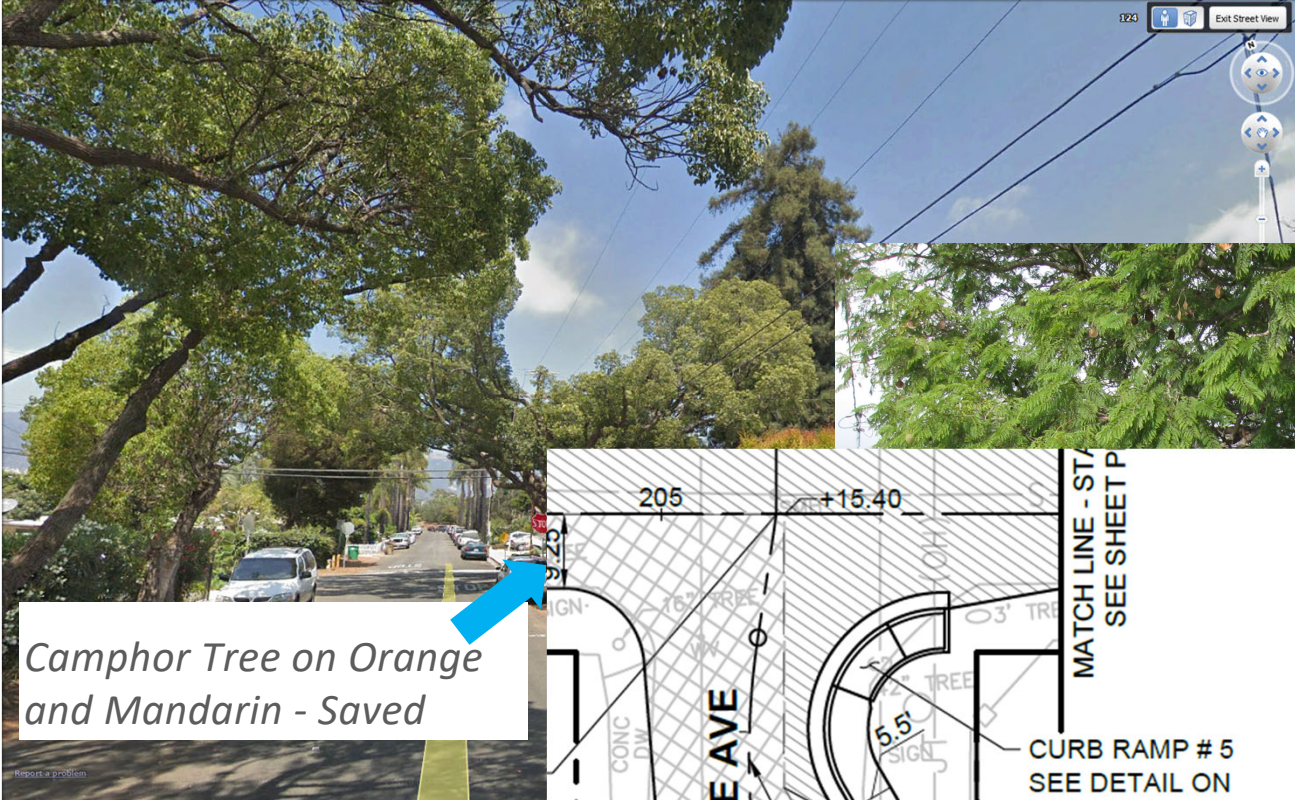
4 LARGE TREES SAVED



OLD TOWN GOLETA

— PROPOSED SIDEWALKS //// ANGLED PARKING
● TREES Initially identified (POTENTIAL)

PINE AVENUE





NONCONFORMING ENCROACHMENTS

Private encroachments into public right-of-way



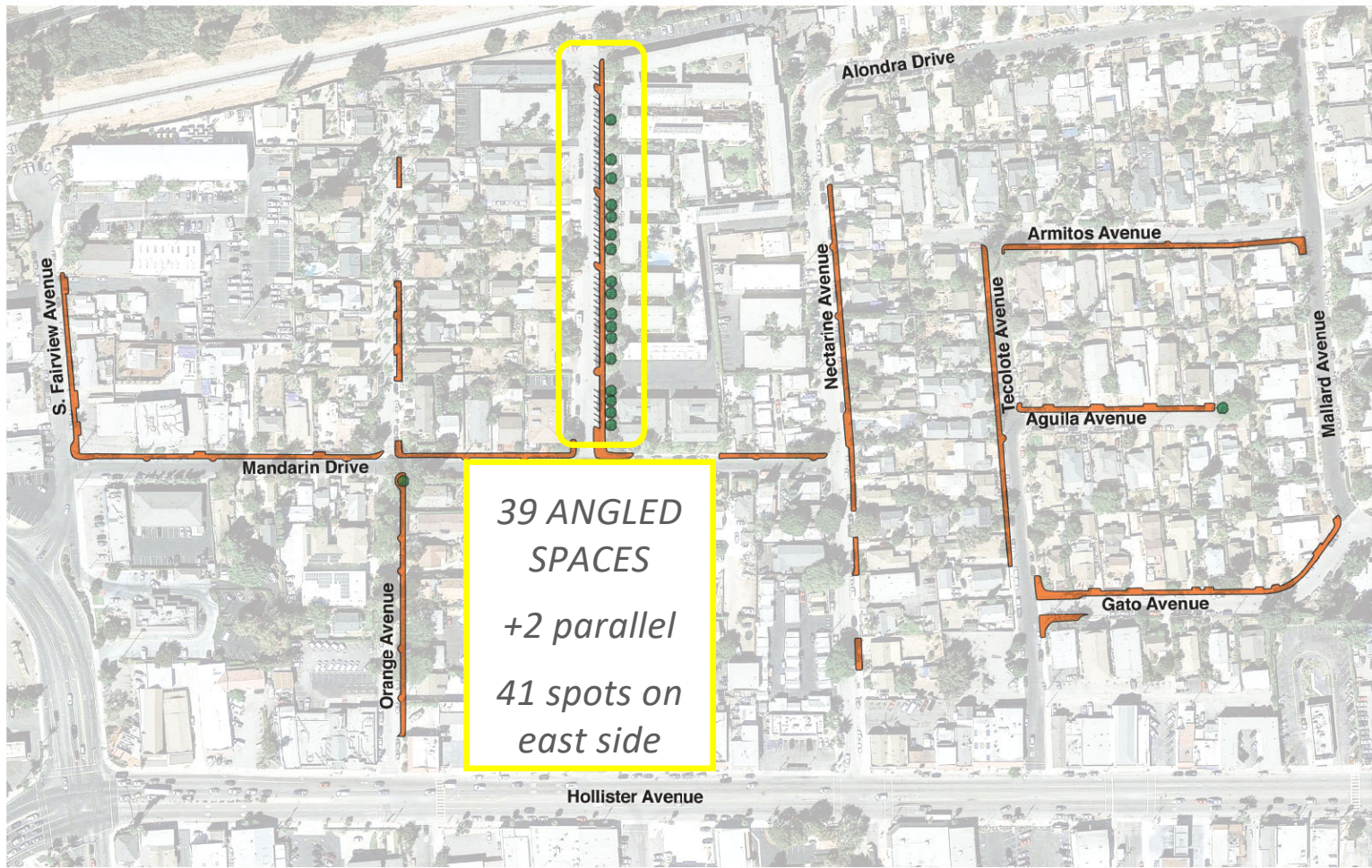
Private Encroachments and Utilities



PARKING

39 new angled spaces on Magnolia Avenue

(increase of 15 spaces)



39 ANGLED SPACES
 +2 parallel
 41 spots on east side



OLD TOWN GOLETA

— PROPOSED SIDEWALKS
 ● TREES

//// ANGLED PARKING (POTENTIAL)

PINE AVENUE

CITY OF
OCEANSIDE,
CA



PUBLIC OUTREACH



Mailings – English and Spanish

Ambassadors Program – coffee hour style in homes

Door-to-Door – City and ROW Agent team

PROJECT INFO



-
- www.cityofgoleta.org
 - *neighborhood mailings & meetings*
 - 805.453.4050
 - sidewalks@cityofgoleta.org

NEXT STEPS





summer
2017

2018

2019

2019
2020

DESIGN

**ENVIRONMENTAL
REVIEW**

**RIGHT OF WAY &
FINAL DESIGN**

CONSTRUCTION



QUESTIONS

& ANSWERS