



Abandoned bridge abutment in channel bed



Natural channel with riparian corridor upstream of bridge culvert



Culvert from Tecolobito into Glen Annie



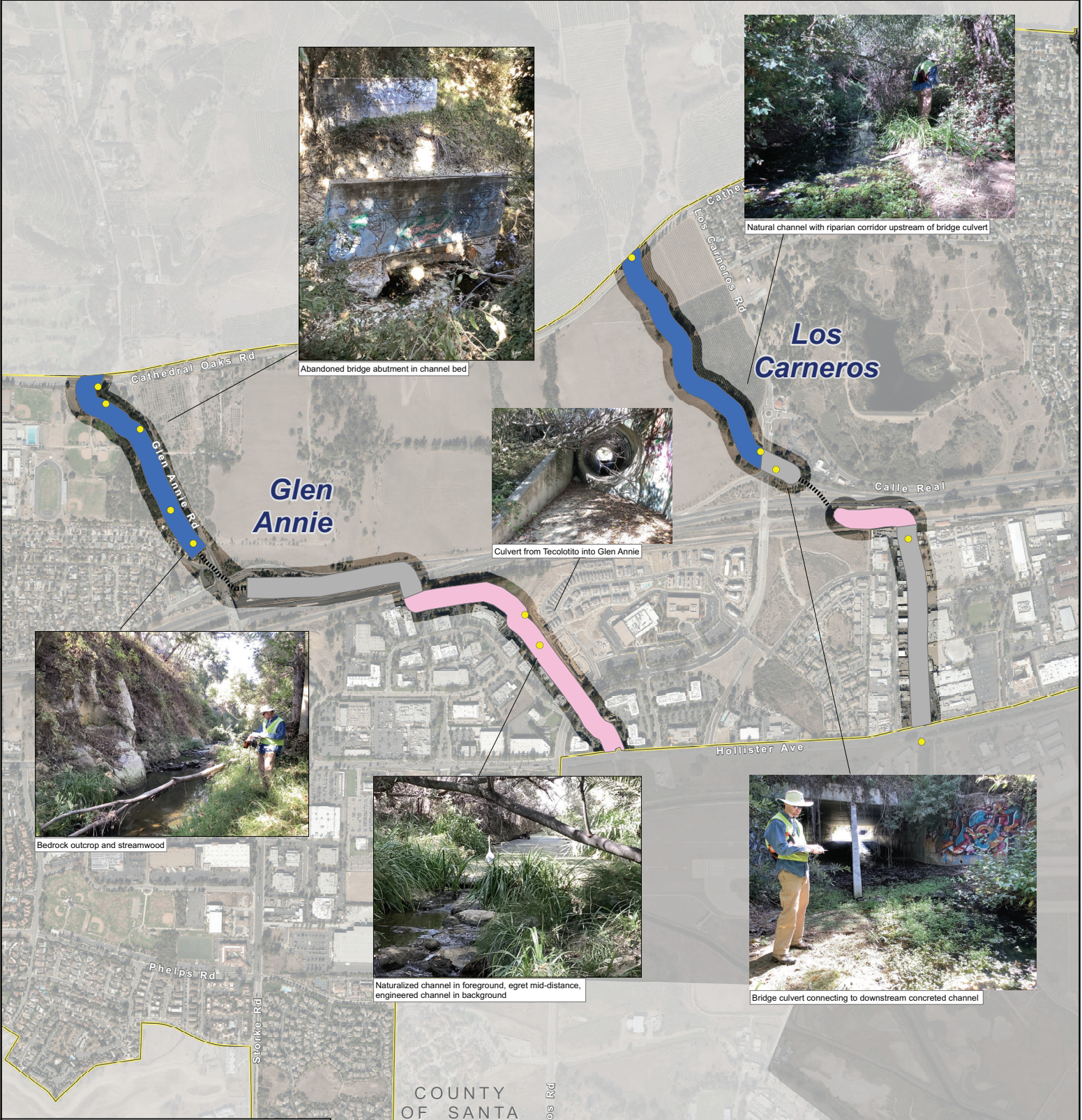
Bedrock outcrop and streamwood



Naturalized channel in foreground, egret mid-distance, engineered channel in background



Bridge culvert connecting to downstream concrete channel



- Goleta City Boundary
- Geomorphic field sites and channel classifications**
- Geomorphic reconnaissance sites
- Natural alignment, fewer geomorphic impacts
- Natural alignment, more geomorphic impacts
- Concrete channels
- Underground culverts

Notes:
Qualitative classifications were made based on point observations along each channel, review of local reports, and aerial photograph interpretation.

Channels that appear to be in approximately the same alignment as original topographic maps are classified as "Natural alignment". These channels were subdivided into reaches that generally show more or less evidence of geomorphic impacts. Impacts include fish passage impediments, bank erosion, high sedimentation, and/or channel confinement (incision, fence revetment or bank protection structures).

