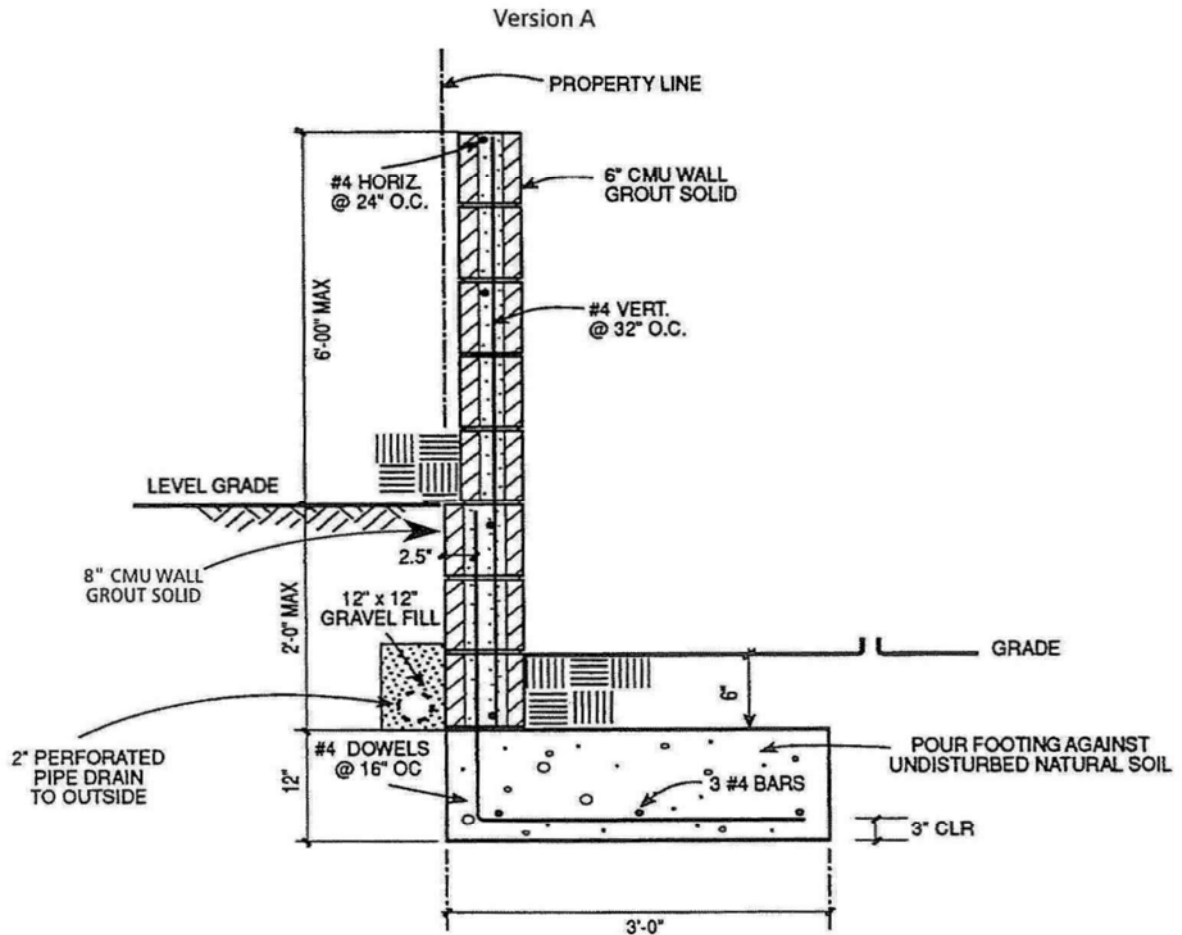


Block Walls

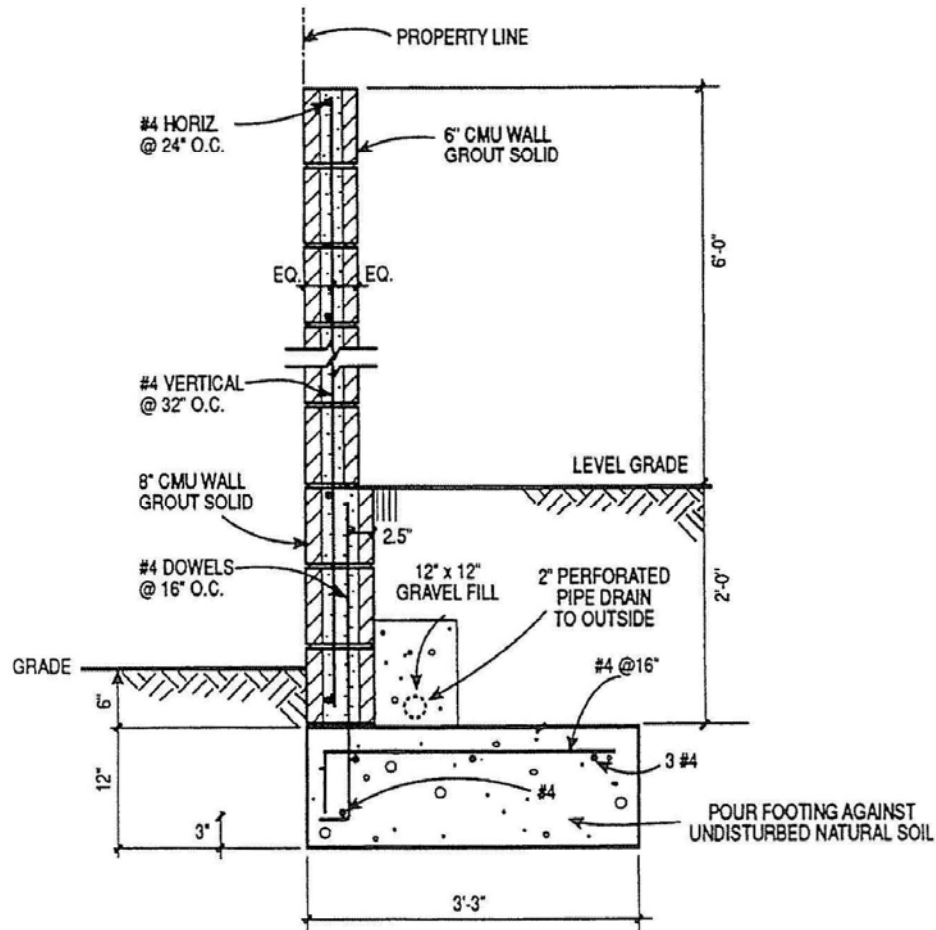


GENERAL NOTES:

1. Concrete - 2000 p.s.i. Min. @ 28 days; Mix. 1: 2 H / 3H, Max w/c 7 H Gal./Sack
2. Reinf. Steel - ASTM.A15 & A305, Min. fs = 20,000 p.s.i.
3. Reinf. Steel Laps - Min. 1'-6"
4. Concrete Masonry units - ASTM C 90; Conc. Blks. Grade (N)
5. Grout - 1 part Cement, 2 to 3 parts sand, 2 parts pea gravel
6. Soil - Max 1000 p.s.f. bearing pressure
7. Backfill - Cohesionless soil
8. No surcharge on wall. Consult a professional Civil or Structural Engineer for design of retaining walls having any surcharge. (Vehicle loading, adjacent footings, etc.)

Concrete Masonry Retaining Wall / Garden Wall

Version B



GENERAL NOTES:

1. Concrete - 2000 p.s.i. Min. @ 28 days; Mix. 1: 2 H / 3 H, Max w/c 7 H Gal./Sack
2. Reinf. Steel - ASTM.A15 & A305, Min. fs = 20,000 p.s.i.
3. Reinf. Steel Laps - Min. 1'-6"
4. Concrete Masonry units - ASTM C 90; Conc. Blks. Grade (N)
5. Grout - 1 part Cement, 2 to 3 parts sand, 2 parts pea gravel
6. Soil - Max 1000 p.s.f. bearing pressure
7. Backfill - Cohesionless soil
8. All workmanship and materials to conform with the UNIFORM BUILDING CODE.
9. No surcharge on wall. Consult a professional Civil or Structural Engineer for design of retaining walls having any surcharge. (Vehicle loading, adjacent footings, etc.)