



Fire Station 10 Community Meeting #2

March 16, 2017
6:00 pm

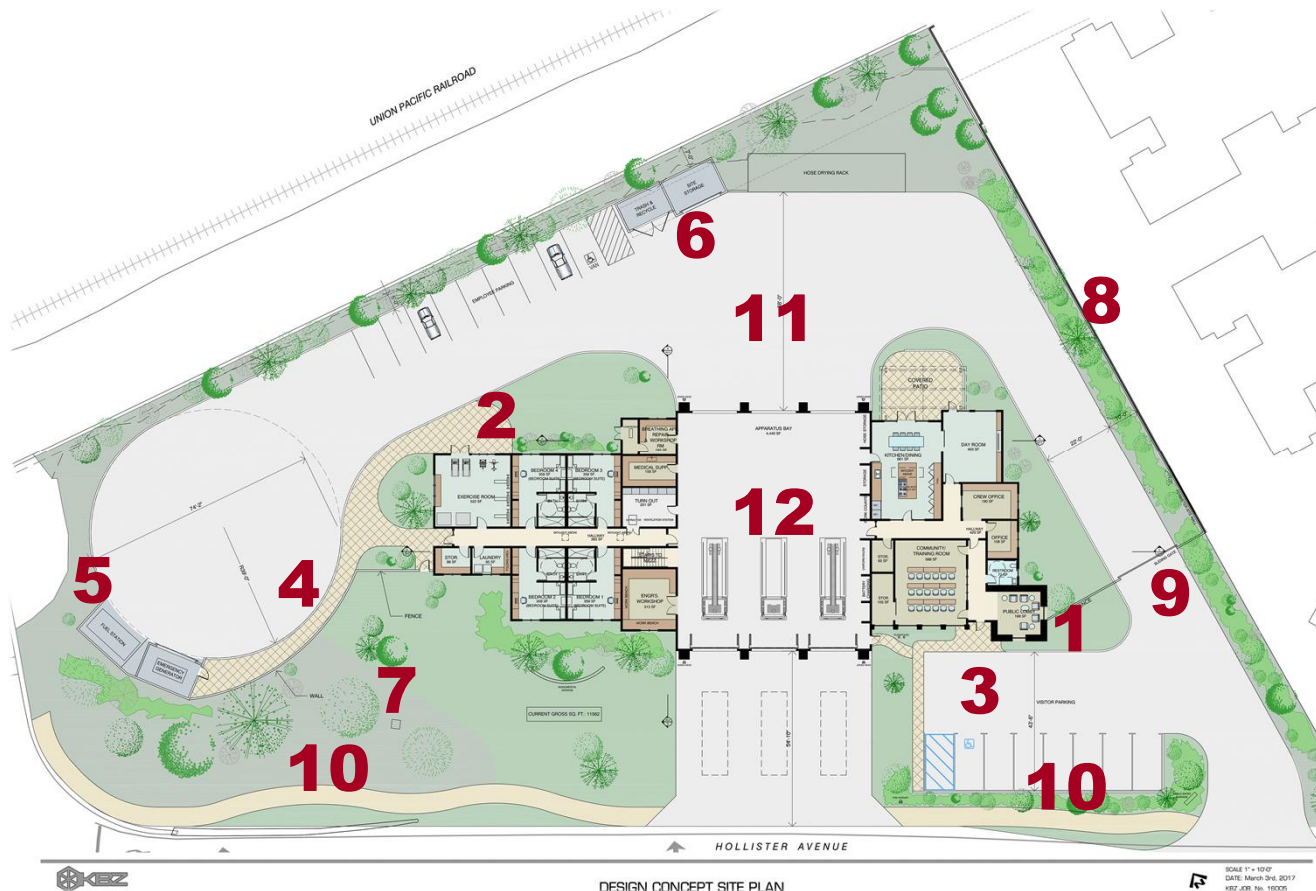
Presented By:

City of Goleta, Neighborhood Services & Public Safety Department
Kruger Bensen Ziemer (KBZ) Architects
Flowers & Associates, Inc.
Leighton & Associates, Inc.
Laura Bridley, AICP

Design Update

Presented by

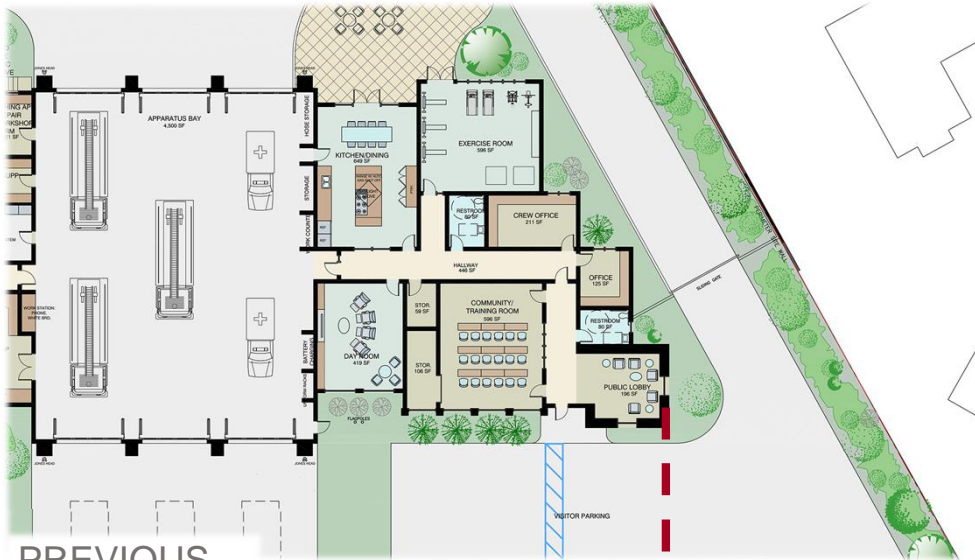
Kruger Bensen Ziemer Architects
(KBZ Architects)



COMMENTS FROM PREVIOUS COMMUNITY MEETING

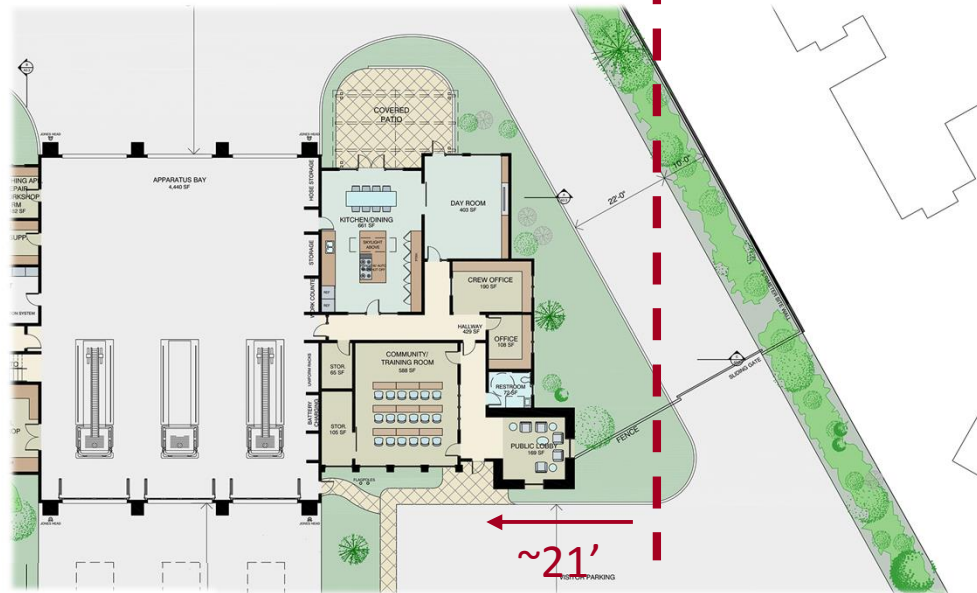
1. Request for tower and other building elements be moved to the west.
2. Preferred balanced appearance of having more of the building on west side.
3. Parking spaces.
4. 2nd driveway.
5. Fuel tank location.
6. Trash enclosure location and view.
7. Existing trees.
8. Planting along shared boundary.
9. Style of gate fence.
10. Green buffer at sidewalk.
11. Lighting and audio.
12. Communication tower.

1



PREVIOUS

TOWER HAS MOVED FURTHER WEST BY APPROXIMATELY 21 FEET.



REVISED



PREVIOUS



REVISED

EXERCISE ROOM HAS MOVED TO THE WEST SIDE OF THE BUILDING.

EAST SIDE OF BUILDING IS SMALLER.

3 & 4



3. PARKING SPACES

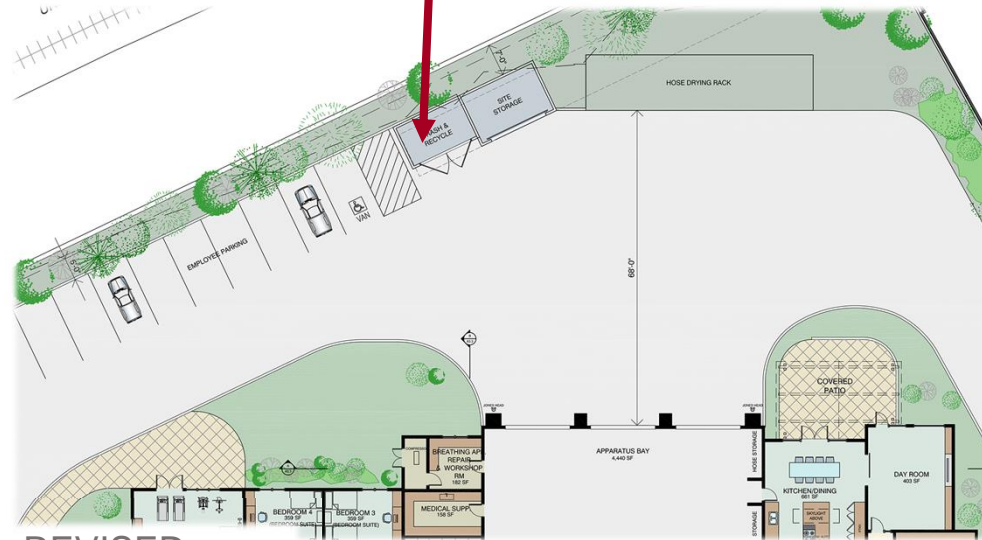
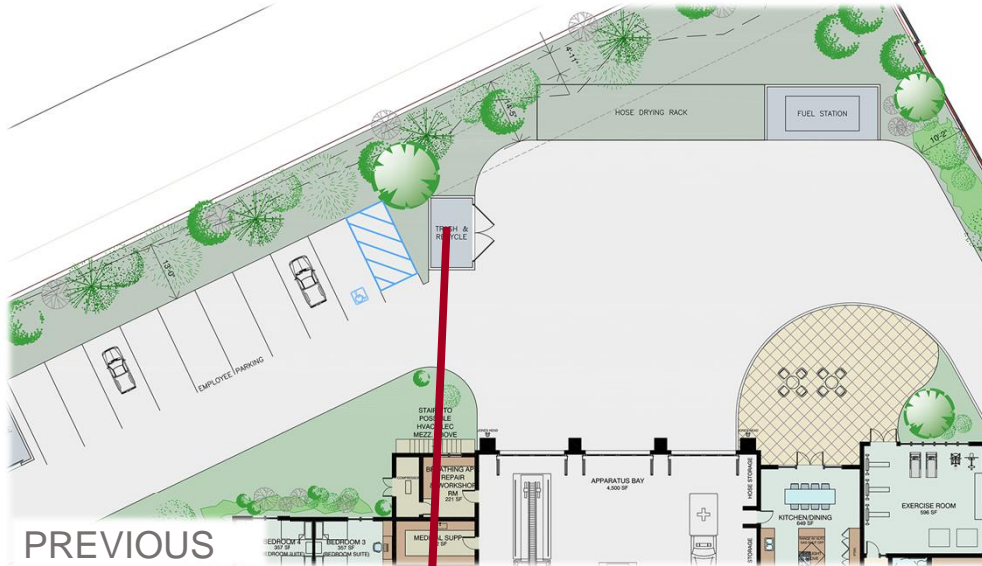
4. 2ND DRIVEWAY

5



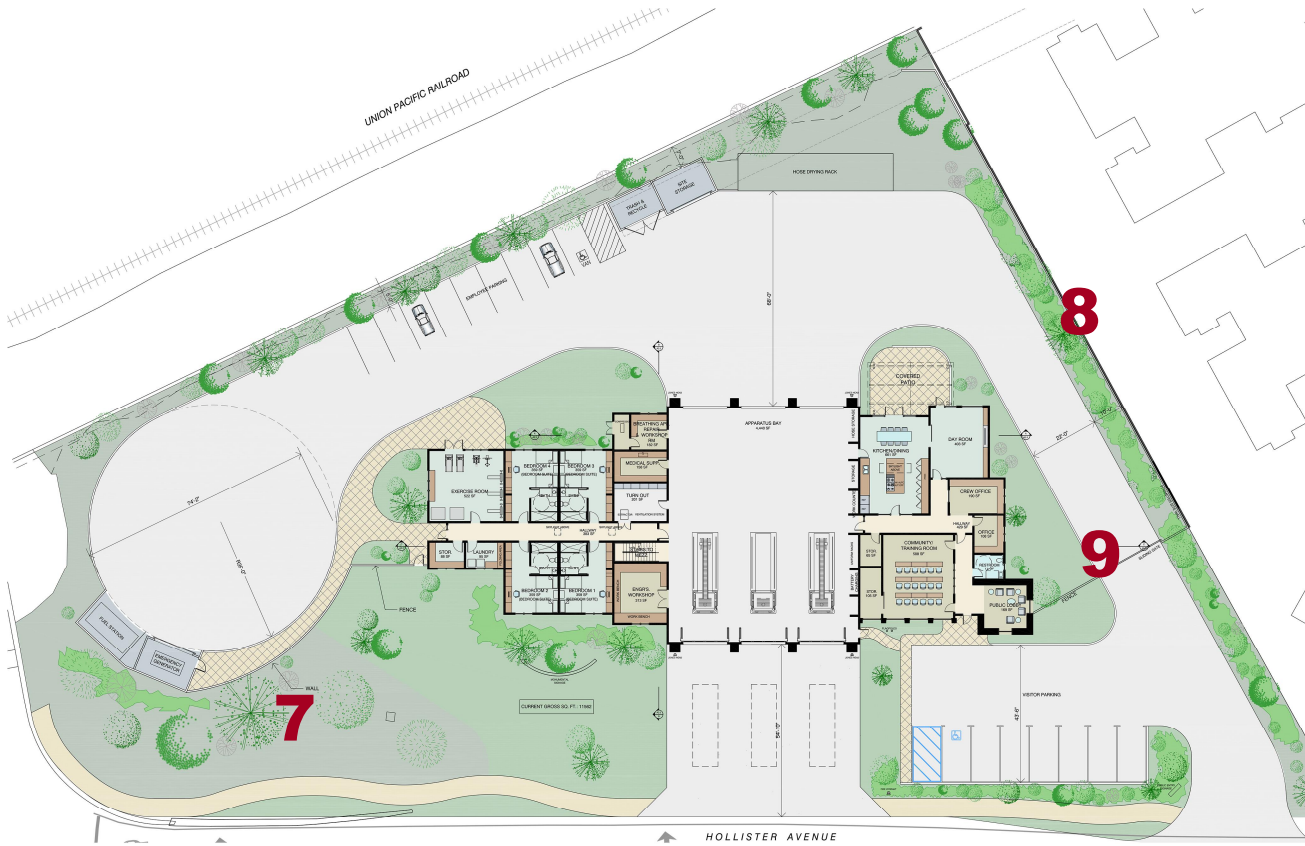


FUEL STATION HAS
MOVED TO WEST SIDE
OF SITE.



TRASH ENCLOSURE DOORS
NOW FACE SOUTH RATHER
THAN EAST.

7 - 9



7. EXISTING TREES

8. PLANTING ALONG SHARED
BOUNDARY

9. STYLE OF GATE FENCE



DESIGN CONCEPT SITE PLAN



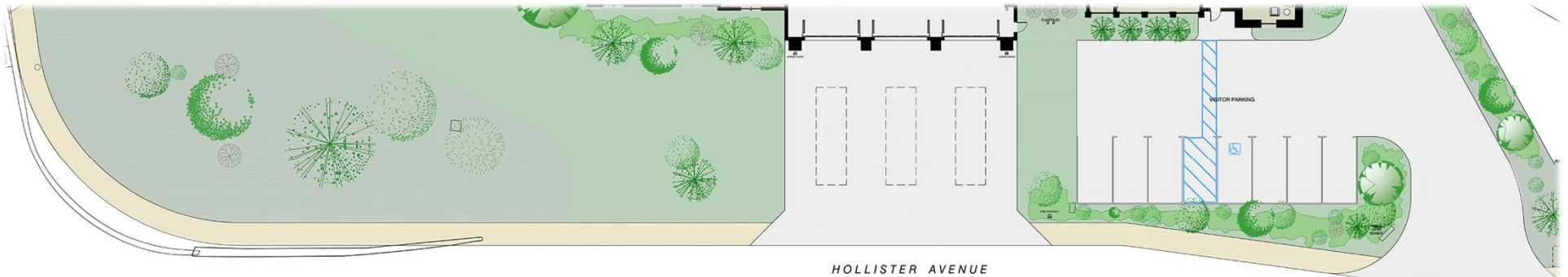
SCALE: 1" = 100'
DATE: March 31st, 2017
K&Z JOB No. 16005

FIRE STATION 10

10

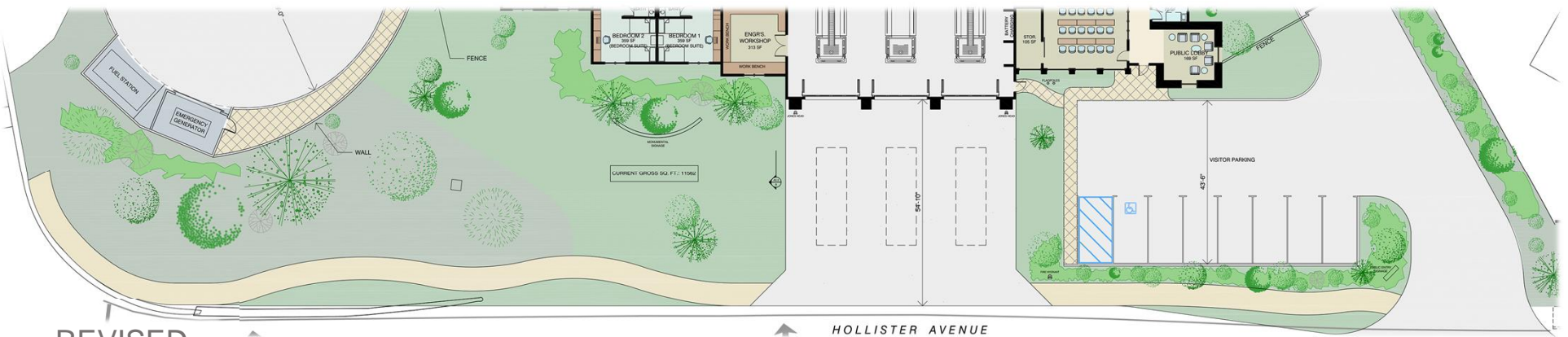


13



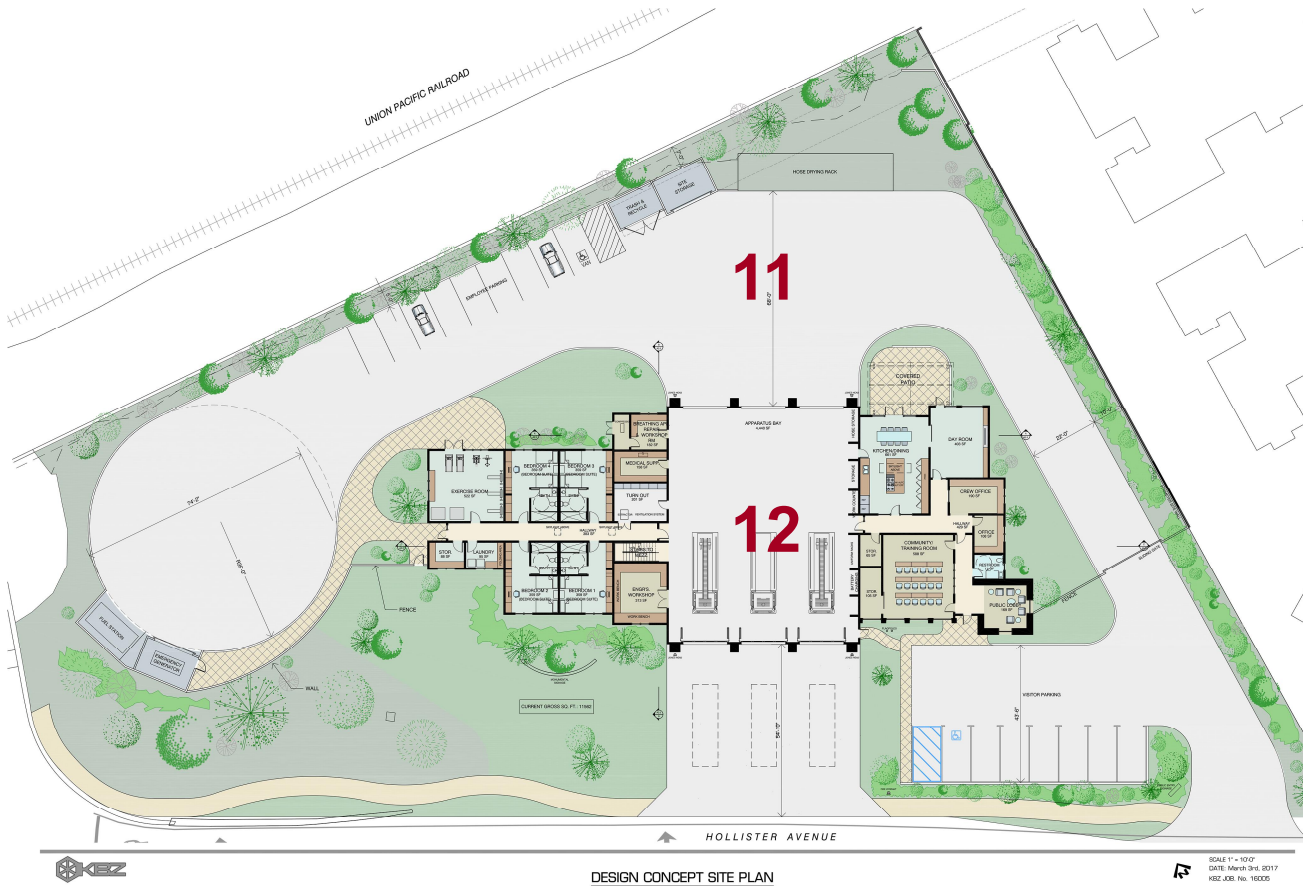
PREVIOUS

GREEN BUFFER ADDED ALONG HOLLISTER SIDEWALK



REVISED

11 & 12



- 11. LIGHTING AND AUDIO
- 12. COMMUNICATION TOWER



SOUTH ELEVATION (FACING HOLLISTER)



WEST ELEVATION



EAST ELEVATION



NORTH ELEVATION

Geotechnical Update

Presented by

Leighton & Associates, Inc.

NORTH SLOPE FIRE STATION #10





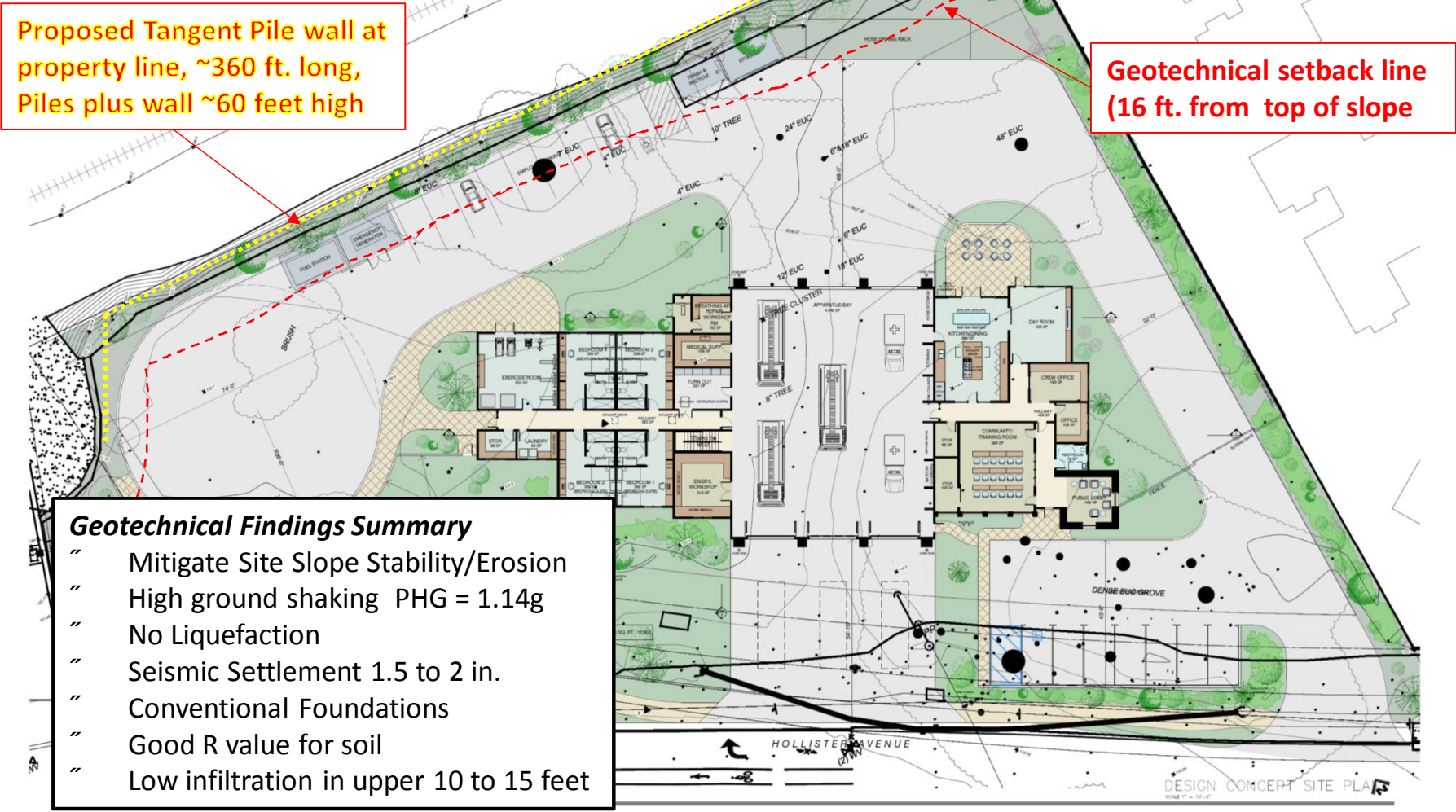
May 6, 2016



January 11, 2017



Slope Mitigation



Proposed Tangent Pile wall at property line, ~360 ft. long, Piles plus wall ~60 feet high

Geotechnical setback line (16 ft. from top of slope)

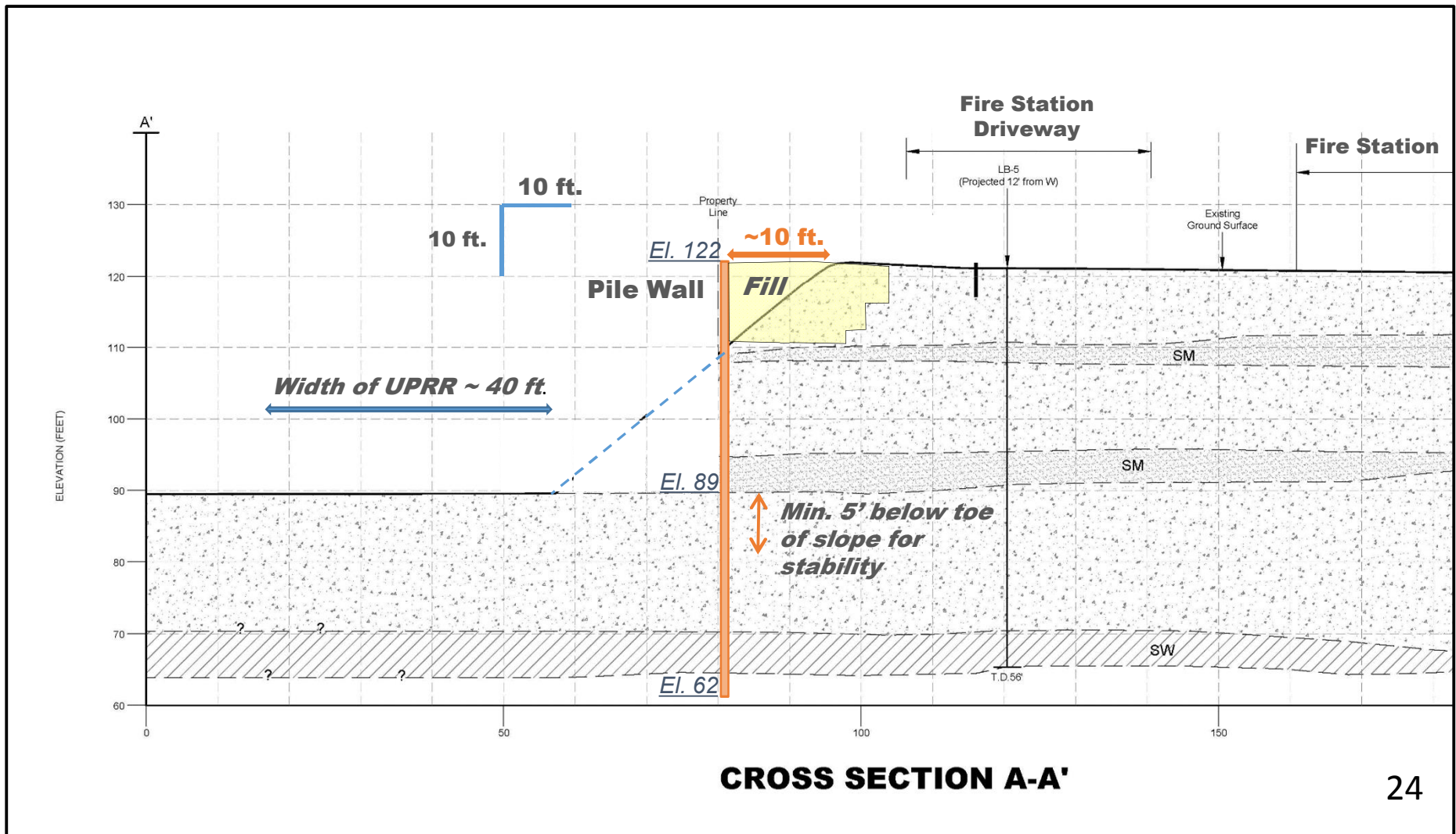
Geotechnical Findings Summary

- “ Mitigate Site Slope Stability/Erosion
- “ High ground shaking PHG = 1.14g
- “ No Liquefaction
- “ Seismic Settlement 1.5 to 2 in.
- “ Conventional Foundations
- “ Good R value for soil
- “ Low infiltration in upper 10 to 15 feet



Slope Mitigation Option 3

~55-60 ft. Piles to El. 122, add 10 feet lateral



2017 Project Milestones

“ March 2017

- “ Submit Entitlement Application Package to City Planning
- “ Release RFP for Focused EIR Preparation

“ April 2017

- “ City Council meeting to initiate General Plan Amendment
- “ Design Review Board – *Advisory Review*
- “ Receive and review EIR Proposals
- “ Initial meet & greet with Coastal Commission staff

“ May/June 2017

- “ Award contract for preparation of Focused EIR and begin
- “ Public Scoping Meeting for EIR
- “ Council Ad Hoc Fire Station Development Committee Meeting

Project Milestones continued...

“ June-September 2017

- “ Preparation of Focused EIR

“ October/November 2017

- “ Completion and team review of Admin Draft EIR
- “ Corrections/edits by EIR Consultant
- “ Notice of Completion to State OPR

“ December 2017

- “ Initiate 45 day public review period for Draft EIR
- “ Council Ad Hoc Fire Station Development Committee Meeting
- “ Public Meeting with City Environmental Hearing Officer
- “ 2nd Touchpoint Meeting with Coastal Commission Staff